

THE HONG KONG GENERAL CHAMBER OF COMMERCE

1964





Report for 1964

Overseas Edition

CONTENTS

	page
Foreword	2
The Hong Kong General Chamber of Commerce	3
 Hong Kong in 1964:	
Introduction	8
Banking and Finance	9
Insurance	11
Building and Land Development	12
The Port and Shipping	13
Dockyards	14
Airport	14
Commercial Statistics	15
Water Supplies	16
Electricity	17
Industry and Trade	18
 Exports of selected Hong Kong products, 1961-64:	
Textiles (general)	21
Outerwear	22
Plastic Flowers, Foliage & Fruit	23
Plastic Toys & Dolls	23
Shirts	24
Shoes	25
Electric Torches	26
Transistor Radios	27
Enamelware	27
Imitation Jewellery	28
Rattan Furniture	28
Imports, Exports and Re-exports by Countries, 1963 & 1964	29
" " " " " Commodities, 1963 & 1964	34
Holidays List	37
Members List	38

Foreword

I have great pleasure in introducing this year's Overseas Edition of the Chamber's Annual Report, in its new form, to all who take an interest in Hong Kong business affairs.

An Overseas Edition appeared for the first time last year. The present production is specially designed to present the events of 1964 in a style which it is hoped will prove both readable and informative. I hope that any overseas readers who wish to know more about Hong Kong in general, or the Chamber in particular, will ask us to let them have other literature which is available, and that they will make use of the Chamber's many services.

My colleagues and I join in wishing all readers of the Report success and prosperity in 1965.



S. S. Gordon
Chairman

THE HONG KONG GENERAL CHAMBER OF COMMERCE

The Chamber represents over 1,100 industrial and commercial firms in the Colony; its purpose is to foster trade and industry. In a normal year's work, the Chamber

- * issues thousands of certificates of origin for Hong Kong products, accepted by customs authorities around the world;
- * inspects factory premises and makes spot checks;
- * handles large numbers of trade enquiries from overseas;
- * assists in organising trade promotion abroad;
- * helps overseas visitors to make the contacts they require and offers them information and advice;
- * investigates any complaints by overseas business houses regarding member firms;
- * mediates, and, where necessary, arbitrates in commercial disputes;
- * circulates an employment register;
- * maintains an evening school in commercial subjects;
- * produces various publications for domestic and overseas use;
- * advises Government on a wide variety of topics, as well as considering in committee many matters affecting the commercial life of Hong Kong, and making representations to the appropriate authorities.

Certificates of Origin

Following the Geneva Customs Formalities Convention of 1923, the Chamber was designated by the Government of the Colony as an issuing authority for Hong Kong Certificates of Origin.

The criteria for determination of origin have been established in accordance with internationally accepted practice, and a Hong Kong Certificate of Origin is issued only when it has been established that the goods are the product of a manufacturing process in the Colony which has changed permanently and substantially the shape, nature, form or utility of the basic materials used in manufacture.

The Rules and Regulations under which the Chamber issues Certificates of Origin conform to the Standard Rules of the Association of British Chambers of Commerce in the United Kingdom, and are designed to render as simple and equitable as possible the procedure and formalities connected with the issue of these Certificates, as well as to secure uniformity of practice as between all issuing authorities.

The Chamber also issues certificates to support re-export shipments. Applicants for these certificates must produce evidence to identify the re-exported goods with the goods previously imported, and support their declaration with:

- (1) A Certificate of Origin of a responsible body in the country of export, and/or
- (2) A certificate by the actual manufacturer or producer of the goods, and/or
- (3) Such other evidence as the Chamber deems to be necessary.

The Chamber's certificates are covered by the "Protection of non-Government Certificates of Origin Ordinance", Chapter 29 of the Laws of Hong Kong.

In 1964, 97,488 certifications of goods and invoices were made, 17.5% more than the previous year. A total of 3,068 applications were returned for amendment or correction and 41 applications were refused.

Trade Enquiries

Trade enquiries from Europe, North America and Australasia are passed, where appropriate, in rotation to a limited number of members who have expressed interest in the commodity and market concerned, and the names, together with other factual information, such as members' bankers, are passed to the enquirers. The selection is now made by means of a punched-card sorting system which has been functioning since November 1964. Enquiries from other sources are published in the Chamber's bi-monthly Bulletin, and thus circulated to members, with the exception of special enquiries which call for a direct reply. A total of 7,680 mailed enquiries were dealt with during the year, as well as nearly two hundred received at the Chamber's stand at the San Francisco Trade Fair (see below).

Registration and Inspection of Factories

At the year's end, details of over seven thousand factories were carried on the Chamber's Register of Factories. The Chamber's staff of Inspectors carried out more than ten thousand inspections and spot checks.

Trade Promotion

In April, Hong Kong mounted its first prestige display in Italy, with an exhibit at the Milan International Samples Fair. The Colony was represented by a pavilion housing a display of Hong Kong products, as well as a commercial information office. Later in the year, the Chamber co-operated with Government, the Federation of Hong Kong Industries, the Hong Kong Tourist Association and the Chinese Manufacturers' Association, in organising a display at the Seventh United States World Trade Fair in San Francisco.

The MS Ceylon, a vessel generously provided by the Swedish East Asia Co. of Gothenburg, in April visited six European ports: Genoa, Antwerp, Rotterdam, Hamburg, Gothenburg and Copenhagen, with a representative selection of Hong Kong products — in the case of the Scandinavian ports, the first ever seen there. The response to this undertaking indicated a high degree of interest in the Colony's products throughout Western Europe.

The exhibitions in Western Europe and the United States were complementary to the work of Mr. K.T. Woo, in New York, and Mr. H.D.M. Barton, M.B.E., in Brussels, who represented the Colony's trade interests in their respective areas under the aegis of the Hong Kong Public Relations Committee.

Visitors

The following delegations and other bodies were among the numerous parties and individuals whom the Chamber helped make welcome to Hong Kong in 1964:

- April: An Iraqi Government Trade Mission; a Trade Delegation from Alaska; a Business Survey Tour of the Perth (Western Australia) Chamber of Commerce; a Group of Businessmen from Maryland, U.S.A.
- May: A Group from Western Australia.
- August: A Mission from International House, New Orleans, on a Far East Tour; the Australian Trade Mission of Queensland Manufacturers.
- September: Delegations from the United Kingdom Cotton Board and from the Paris and other French Chambers of Commerce.
- October: The Nagasaki Prefectural Economic Inspection Mission.
- November: Trade Missions from New Zealand and Ontario; a French Cotton Textiles Mission.

Complaints

Last year 262 complaints were received, of which 140 concerned member firms and were dealt with by mediation through the Chamber. The others, concerning non-member firms, were passed on to the Hong Kong Tourist Association or to Government's Commerce and Industry Department for action. The Chamber also conducted commercial arbitrations in some cases of dispute, and is officially designated correspondent in matters of this nature to ECAFE (the United Nations Regional Economic Commission on Asia and the Far East).

Publications

Chamber publications at present available include the Annual Report, a general information booklet on Hong Kong, a Facilities Booklet explaining the services provided by the Chamber, and a series of leaflets listing Hong Kong products under various categories. The facilities booklet and leaflets are available in French, German, Spanish and Italian as well as English.

Further Services

The Chamber particularly welcomes requests from overseas businessmen for advice, information and contacts on most matters concerning Hong Kong industry and commerce. Enquiries and correspondence should be addressed to:

THE HONG KONG GENERAL CHAMBER OF COMMERCE

UNION HOUSE

P. O. BOX 852, HONG KONG

Cables: "Chambercom"

Telephone: 237177

GENERAL COMMITTEE, 1964

HON. S.S. GORDON (Chairman)
HON. G.R. ROSS (Vice-Chairman)
H.J.C. BROWNE, ESQ.
HON. SIR SIK-NIN CHAU, C.B.E.
HON. J.D. CLAGUE, C.B.E., M.C.
S.J. COOKE, ESQ.
J. DICKSON LEACH, ESQ. O.B.E.
HON. H.C. FUNG
M.A.R. HERRIES, ESQ., M.C.
L. KADOORIE, ESQ.
I.H. KENDALL, ESQ.
HON. R.C. LEE, C.B.E.
G.M.B. SALMON, ESQ.
J.A.H. SAUNDERS, ESQ., D.S.O., M.C.
P.G. WILLIAMS, ESQ.
T.Y. WONG, ESQ.

Introduction

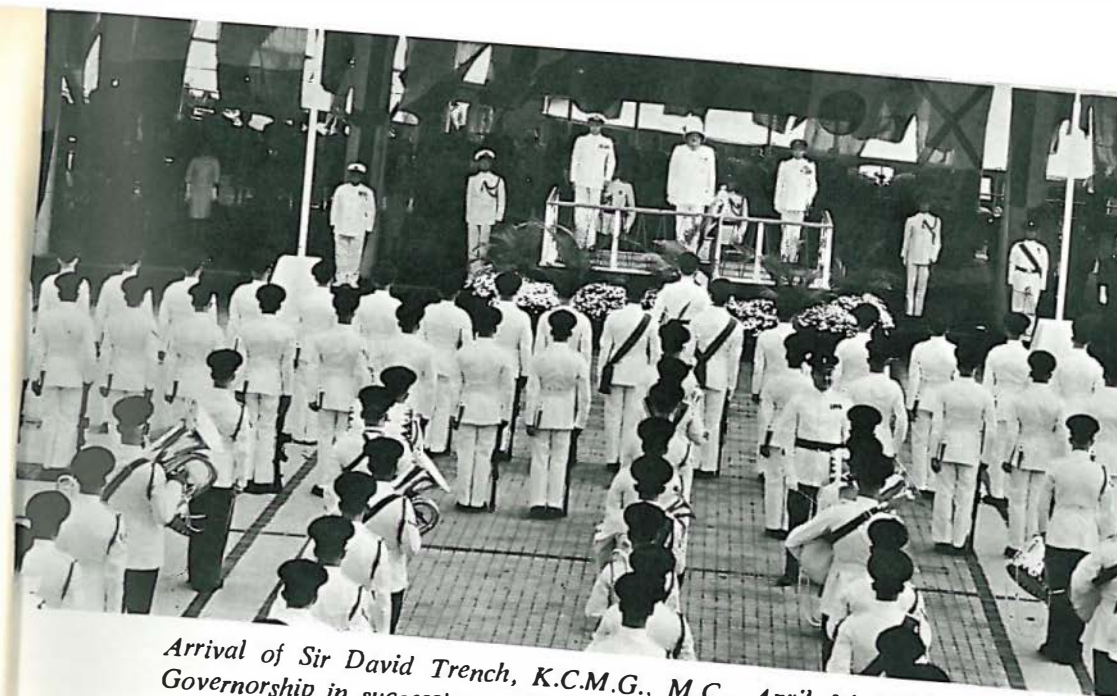
The year 1964 was one of steady progress rather than sensational political or economic developments for the Colony's population of nearly three and three-quarter millions. Most of the excitement was provided by Nature, which seemed set on disrupting Hong Kong's daily life with first drought and then typhoons. The United Kingdom Government's imposition of the 15% Import Surcharge towards the year's end also caused considerable concern to manufacturers and exporters, but local trade and industry showed significant expansion despite these setbacks.

Commenting on the Import Surcharge in his Annual Statement, the Chairman of the Chamber, the Hon. S.S. Gordon, said: "Uncertainty as to when the surcharge will finally be lifted is still disrupting forward ordering. The manner of its imposition was particularly regrettable. Any prosperity we may have is a condition of our survival here in Hong Kong, rather than a luxury, and the ability to cushion such severe measures against our trade is strictly limited. Despite the danger of congestion in United Kingdom ports, it is a source of some gratification that the British Government has now seen fit to give two months notice of the first reduction in the surcharge as this will minimise the disruptive effects, and Hong Kong should suffer no disadvantages from her geographical position."

Among other significant developments during the year were the arrival of a new Governor, Sir David Trench, K.C.M.G., M.C., the improvement of water supply systems, plans for increased electricity generation, moves to stabilise banking practices, and the expansion of the Legislative Council, with particular emphasis on increasing the numbers of Unofficial Members. This last measure was summed up by Mr. Gordon as "a sign of the Administration's desire to obtain the views of a broad section of the public."

On another topic, he commented; "With regard to the change of Government in Britain, the assurances given Hong Kong earlier in the year by Mr. Arthur Bottomley, then shadow Commonwealth and Colonial Secretary, during a visit to the Colony, have taken on particular importance for us. Mr. Bottomley, it will be recalled, made it clear that a Labour Government in Britain would take no unilateral constitutional steps which might endanger Hong Kong's security in the future."

He also referred to rising standards of living among the Colony's population, concomitant with improvement in industrial benefits and working conditions, which, he pointed out, "compare very favourably with those anywhere in South East Asia, and some of our biggest manufacturers have insisted on exemplary conditions even by world standards from almost the very beginning of our industrialisa-



Arrival of Sir David Trench, K.C.M.G., M.C., April 14 1964, to take up Governorship in succession to Sir Robert Black, G.C.M.G., O.B.E.

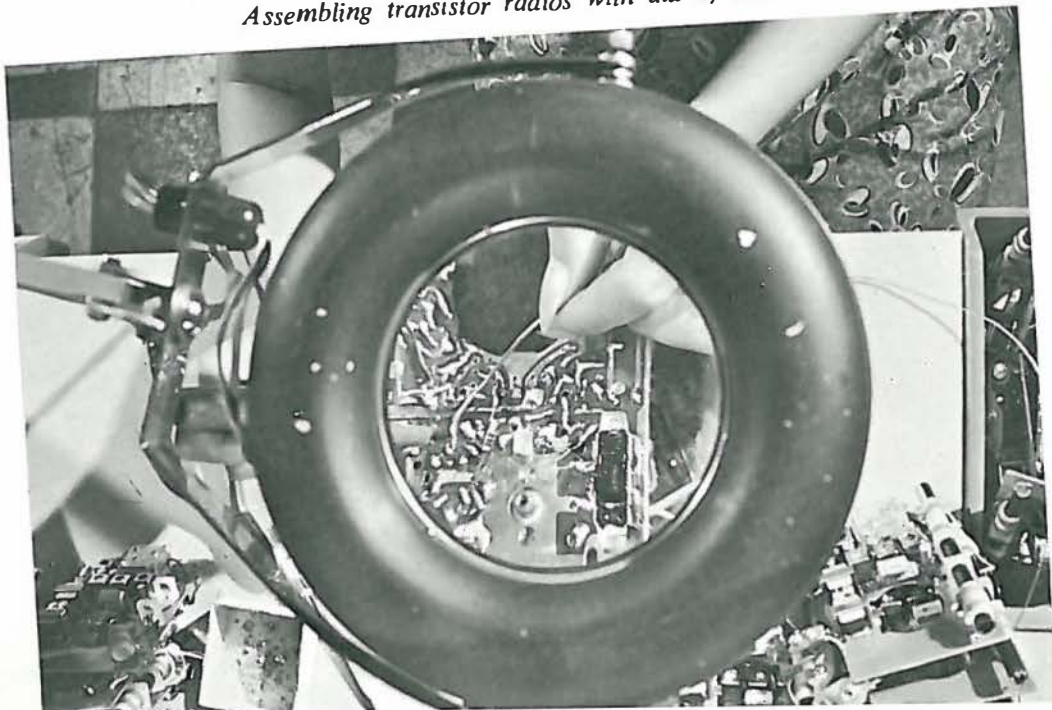


Typhoon damage



Garment factory

Assembling transistor radios with aid of lens



tion." Better conditions were growing from within industry itself as well as being imposed by legislation, "and overseas visitors, who may have come here fed on lurid legends of 'sweated labour', find that leading manufacturers are to a greater and greater extent providing benefits for workers, such as subsidised housing and meals, medical care and educational aid. The process has been stimulated and assisted by the construction of more new and up-to-date factory premises. The demands of a social conscience aside, the practical inducement power of such schemes pays dividends in the quality and stability of the work-force."

In this context it is worth noting that wage rates in Hong Kong have risen by some 50% in the last five years.

The Chairman also stressed the usefulness of joint ventures linking local resources with overseas technology, management and marketing experience, and referred to welcome diversification of Hong Kong industry during the year, particularly in the fields of electronics and steel pipes.

The Chairman concluded by saying that the year's performance was "a source of optimism for the future," which was an accurate reflection of the general mood in the Colony at the end of 1964.

Banking and Finance

Banking business in Hong Kong continued to expand vigorously in 1964, while at the end of the year legislation came into force aimed at stabilising activity in this sector.

The timeliness of these measures was emphasised by events early in 1965, when a few local banks got into difficulties resulting from a sudden loss of confidence, particularly among small depositors, and a rush to withdraw savings. Government, the Hongkong and Shanghai Banking Corporation and the Chartered Bank stepped in promptly to check the situation, and the run was brought under control in a few days. Mr. H. J. Tomkins, of the Bank of England, visited the Colony again to review the situation, following the incorporation of earlier proposals of his in the new Banking Ordinance, which took effect in December.

The Ordinance stipulates a minimum capital of HK\$5 million for each bank, which must also show or build up a reserve fund equal to this figure. There are specific limitations on investment in real estate and in the share capital of other companies, and banks must maintain liquidity ratios amounting to 25% of total deposit liabilities. The first Banking Commissioner to be appointed under the Ordinance was Mr. Leonidas Cole, a former senior executive of the Ottoman Bank.

Branch banking kept on expanding during the year: sixty-four new banking premises opened, bringing the Colony's total to 296. Volume of business

transacted continued to grow at a brisk rate, concomitant with higher standards of living and resulting partly from improved education in the advantages of banking facilities, as well as because of flight capital due to the worsening situations in some South East Asian countries.

The Total Deposits recorded by the 70 banks reporting at the end of September 1964 amounted to \$6,309 million against a December 1963 total of \$5,425 million. The biggest gain was in Time Deposits which reached an all time high of \$2,778 million with a rise of \$495 million for 9 months. Meanwhile Demand Deposits rose to \$2,105 million from \$1,997 million and Savings Accounts to \$1,425 million from \$1,145 million. Competition for the potential deposits was reflected in the high rates offered by many banks for Time Deposits. This unhealthy financial trend was viewed with some alarm by the majority of the banks and, after months of negotiation and bargaining, agreement was reached between all banks in the Colony on maximum quotations for various types of deposits. This agreement, known as the Interest Rate Agreement, is valid until the end of March 1965, when it will be reviewed.

The values of certain categories of real estate appear to have remained constant in the later months of 1964, but there have been faint indications of a slight dip in this field of investment. Properties affected were, however, only in the luxury grade of domestic premises and in industrial properties in some areas where prices had advanced fast. There is still a very firm demand for medium and low-priced domestic accommodation, and if there is any fall in 1965 it would seem to be most likely in those commercial properties which rely upon the retail trade. The steady increase in rents over the past two or three years has made it increasingly difficult for retail shops to operate, and, as consumers' resistance builds up against the increased cost being passed on to them, where may be a concerted effort on the part of tenants to obtain cheaper premises.

In the field of lower and middle cost housing, 1964 has seen the setting up of the Hong Kong Building and Loan Agency Limited, in which the Government is participating, together with the Commonwealth Development Corporation and four banks in Hong Kong, "to encourage and facilitate the private ownership of residential property including flats by making loans secured by mortgages of residential property of any kind or tenure". The capital of the new Company is initially HK\$2 million, but further finance has been pledged to provide an initial loan fund of \$70 million.

The operations of the Hong Kong and Mongkok (Kowloon side) Clearing Houses continued satisfactorily during 1964 and record figures were again established in both places. The total value of cheques cleared through Hong Kong was \$41,209 million, an increase of \$8,271 million over 1963, while the Mongkok figure was \$666 million to give a Colony total of \$41,875 million against \$34,519 million in 1963.

Insurance

The insurance market in Hong Kong benefitted from the Colony's industrial development and the consequent increase in locally manufactured goods during 1964. The number of insurance companies increased slightly, and active competition continued to have a stimulating effect.

A record number of six typhoons affected the Colony during the year, not only causing direct physical damage, but also leading to congestion and delay. The severest storm struck early in September, causing nineteen vessels to break or drag their moorings, of which three sank and sixteen stranded. For almost a week, neither barges nor lighters were available to move cargo. Typhoons also caused considerable damage to junks, barges and other light vessels.

Intense competition for traditional markets has forced exporters to direct their attention to other areas which are often unattractive from an insurance point of view. Central and South America and West and Central Africa are particularly difficult areas in this respect. There were 121 companies registered with the Insurance Association as maintaining offices or agencies in the Colony transacting marine business during the year.

A number of serious fires occurred in factory premises, and in many instances the outbreak could be attributed to inadequate maintenance of electrical equipment, congestion and low standards of housekeeping. The most disastrous loss resulted in damages of HK\$2.5 million at a flatted factory building on Kowloon side. A fire involving many varieties of goods stored in a dock area godown caused damage in the region of \$2 million. With the end of the Drought in June, and despite steps taken by the Fire Services to overcome the difficulties of restricted water supplies, it was fortunate that fire wastage figures did not reach record proportions. An abnormal number of weather claims were reported and the main damage from this cause was by two typhoons in September. Losses are expected to amount to several million dollars.

In addition to the provision of flats and factories, major hotel projects on both sides of the harbour were completed during the year, with a resultant rise in the volume of fire business transacted. Increasing attention has been paid to fire prevention in industry, and important legislation relative to Dangerous Goods was revised during the year to embrace materials not previously covered, though some modifications to this legislation were made as a result of representations by the Chamber and other bodies. Companies registered with the Hong Kong Fire Insurance Association as transacting this class of business numbered 135 at the year's end.

Motor insurance continues as the main class of business transacted by Accident underwriters. The number of registered vehicles increased by 16.3% over 1964, and the resultant congestion on the Colony's roads produced a noticeable

increase in loss ratios. The lack of adequate garaging facilities compels motorists to park overnight on public highways, where vehicles are more susceptible to accidental and malicious damage. The cost of vehicle repairs continues to rise and cause much concern to insurers generally. Despite these features, insurance premiums are lower than in most other areas with comparable traffic density.

The building industry created the greatest demand for Workmen's Compensation Insurance. Serious hazards are involved, and this industry was also responsible for the largest proportion of accidents. In October new legislation was introduced, extending the application of the Workmen's Compensation Ordinance to embrace an extensive schedule of occupational diseases. Insurers were however quick to react, and policies were likewise extended to include the increased liability of employers, with no revision in premiums.

Building and Land Development

A sharp rise in industrial land prices; a boom in construction projects; tightened Government control over site-development: these were some outstanding features of this field of activity in 1964.

All land in Hong Kong is owned by the Crown and nowadays, except in the New Territories, Crown Leases are granted for 75 years, renewable for a further 75 years at a reassessed Crown rent. In the New Territories they are normally granted for 99 years, less three days, dating from 1st July, 1898. Except in special cases such as low-cost housing projects, schools, clinics, approved charitable purposes and public utilities, leases are sold to the highest bidder at public auctions in accordance with programmes announced in advance. Apart from obvious advantages to local purchasers, overseas investors, on application to Government, can obtain a programme for three months ahead.

Industrial land leases sold by the Crown in the Kwun Tong and San Po Kung areas and elsewhere showed steep price increases early in the year. There was also brisk competition for commercial and high-density residential sites, though demand for luxury flat sites was more subdued. Value of buildings completed in 1964 was up by nearly 50% over 1963 to \$839 million, a rise only partly attributable to higher labour costs. Residential building, as usual, formed the bulk of construction work undertaken.

In September, Government introduced legislation which held up work on over 300 sites. This was the Buildings (Amendment) (No. 2) Ordinance 1964, which is aimed at protecting neighbouring buildings from damage by nearby construction works. The authorities are now empowered to ban piling, excavation or demolition, if they threaten already existing buildings with collapse.

Reclamation of land from the sea continued at Kwun Tong (on Kowloon side's north-eastern harbour frontage, overlooking the airport runway), and at

Tsuen Wan (in the south-western New Territories). New land at Kwun Tong will pave the way for industrial construction to provide jobs for people in the estates growing up on the hills behind. The Tsuen Wan development plan was expanded to provide for some 1½ million people, and will be served by a new coastal road.

In addition to these two areas under construction, outline development plans have been ordered for a new town at Castle Peak and to revise the existing statutory plan for Sha Tin. Development also continued at Aberdeen, where the Board's plan was approved by the Governor in Council early in the year. Studies of the Tsim Sha Tsui area on Kowloon side continued and dumping started in preparation for reclamation at Wan Chai. Development plans for these two areas may one day provide the terminal points of a proposed cross-harbour vehicular tunnel.

The Port and Shipping

The Port of Hong Kong's outstanding speed of dispatch and economy of handling continued during 1964 to attract vessels of new shipping services, but typhoons and storms highlighted some weaknesses in its operation and steps are being taken to remedy these.

Departures were at an average monthly rate of 54 to the United States and 36 to Europe, besides regular services to other important destinations. An attractive feature of Hong Kong, as previously, was its comparative lack of restrictions, enabling large cargoes to be handled in a short period.

However, the shortage of sheltered anchorage space was emphasised by the record number of typhoons during three months in the summer, as well as five other storms and an exceptionally high rainfall. Congestion and delays in shipping caused by the gales were at times so serious that normal harbour facilities and labour available were unable to cope. During a two-week period in September, there were never less than 120 vessels in the harbour, and the figure reached 140 for two days of this period. Although these conditions were caused by exceptionally bad weather which may never recur, Government examined the question of typhoon shelters; short-term proposals are in hand, and the long-term needs are also being put under study.

The Marine Department went ahead with a re-siting scheme to increase the working efficiency of the Western Harbour and provide more moorings. Harbour pollution was tackled by a Scavenging Unit, which was removing some 24 tons of rubbish from the harbour each day.

The British 15% import surcharge had affected shipping only marginally by the year's end. In general, 1964 was a reasonable year for shipowners in the charter market, but at the end of the year there was no sign of any boom in tramp

freight rates, mainly because of the continuing rapid expansion in new building of bulk carriers and tankers. In liner trades there were indications of a need for rationalisation of shipping services in certain areas, but the practical problems of achieving this tend to conflict with the variety of merchants' requirements. The activities of the Japanese shipping companies has increased as expected following the re-organisation of liner groups.

Hong Kong now has its own branch of the Institute of Chartered Ship Brokers of London, which held its first meeting in 1963; it is flourishing and has a comprehensive library.

Dockyards

Taikoo Dockyard obtained an order from The China Navigation Company Ltd. for a Single Screw Motor Ship of 450' 00" BP, as well as orders for small craft and barges. New ships completed and delivered to owners during the year included two motor cargo ships for the Union Steam Ship Company of New Zealand Ltd. and 27 small craft for Far East and South Pacific owners. A total of 922 ships representing 5,493,555 gross tons were handled for repairs. Following various of the year's typhoons, salvage work was carried out on nine ships in Colony Waters.

Hongkong & Whampoa Dock Co. Ltd. built and delivered vessels which included two single-screw motor harbour tugs, a harbour oil bunkering barge, two motor passenger ferries, a floating explosives barge, three pontoons and a catamaran-type refuse collecting barge, which was constructed for the Hong Kong Government. During the year 569 ships with a total tonnage of 2,282,734 were drydocked or slipped, while a further 584 of some 3,681,679 gross tons were repaired at wharves, seawalls and anchorages. Work was carried out on ships of 21 different national flags, as well as for the Royal Navy, the Royal Australian Navy and the U.S. Navy. Repairs were also effected on a large number of tankers employed in "Operation Water", and on the new hydrofoils in service between Hong Kong and Macau. New heavy shipbuilding machines were ordered and partially installed, as well as improved Vacu-Blast equipment and Diesel Air Compressors in the new Hot Galvanising Plant, which is now being used for shot-blasting of hulls.

Airport

Kaitak Airport, which accounts for over 80% of tourists, and nearly all businessmen visiting the Colony, saw a steady increase of traffic throughout the year. Developments planned to help cope with this include an extension to the Cargo Terminal Building as well as new Navigational and Distance Measuring Equipment. A projected expansion of the Aircraft Parking Apron will improve accommodation for such aeroplanes as the Super VC-10.

COMMERCIAL STATISTICS

The following statistical tables covering shipping, aircraft and trade figures are provided by courtesy of the Statistics Section of the Hong Kong Government Commerce and Industry Department.

Shipping (Ocean and River Over 60 tons Net)

Entering and Clearing the Port of Hong Kong, 1963 & 1964

FLAG	Entered			
	1963		1964	
	No.	Tons	No.	Tons
British	3,183	7,171,492	5,345	7,469,335
Foreign	4,773	18,193,176	5,158	19,892,330
Total	7,956	25,364,668	10,503	27,361,665
	Cleared			
	1963		1964	
	No.	Tons	No.	Tons
British	3,169	7,145,558	5,340	7,359,413
Foreign	4,729	17,934,446	5,193	20,033,596
Total	7,898	25,080,004	10,533	27,393,009

COMMERCIAL CARGO TONNAGES

	Discharged		Loaded	
	1963	1964	1963	1964
	D.W. Tons	D.W. Tons	D.W. Tons	D.W. Tons
Ocean-going Vessels	6,487,095	7,131,333	1,978,675	2,275,194
River Steamers	15,754	9,983	15,265	11,681
Junks	1,475,785	1,484,964	214,539	151,900
Launches	136,934	166,193	14,282	2,000
Total	8,115,568	8,792,473	2,222,761	2,440,775

Arrivals and Departures of Aircraft, Passengers & Freight at Kai Tak

	1963	1964
Aircraft:		
Arrivals	8,562	9,357
Departures	8,560	9,355
Total:	17,122	18,712
Passengers:		
Arrivals	318,595	390,058
Departures	326,732	393,193
Total:	645,327	783,251
Freight:		
Imports (kilogrammes)	2,426,372	2,936,482
Exports (kilogrammes)	5,809,679	7,360,732
Total:	8,236,051	10,297,214

Water Supplies

Work went ahead during the year on a large-scale water-storage scheme—to reach completion in 1969—and the authorities of the People's Republic of China are co-operating with the Hong Kong Government in increasing their water supplies to the Colony. These measures are aimed at preventing a recurrence of the Great Drought, which held Hong Kong in its grip for nearly 12 months in 1963-64.

The Colony's terrain is of little help to the planners in finding reservoir sites. The new Shek Pik Reservoir, built on thinly-populated Lantau Island, required eight miles of twin submarine pipeline, besides miles of underground tunneling, to feed water into the urban area at a cost of some HK\$250 million. Shek Pik's storage capacity of 5,500 million gallons has increased total water storage by 50%, but this is still inadequate, as it is estimated that consumption rises by over 10% compound per annum.

During the Drought itself, supplies were brought by chartered tankers from the Pearl River. At the peak of "Operation Water," as this costly scheme was known, some 12 tankers were shuttling to and fro. They made a total of 1,370 trips and carried about 4,288 million gallons—nearly a third of the water used during the Drought. In all, the operation cost over \$65 million.

At the same time, under an agreement signed in late 1960, the Chinese authorities were continuing to supply Hong Kong with 5,000 million gallons of water a year through a 48-inch pipeline laid from their reservoir at Shum Chun near the border. During the Drought, arrangements were made to obtain increased supplies from the Chinese, and as a result of the construction of dams and pumping stations to bring water from the East River, Hong Kong is receiving a minimum of 15,000 million gallons of water a year from China.

At present Hong Kong uses more than 100 million gallons of water a day as compared with the figure of 30 million gallons during the drought. To meet this ever-increasing demand, several other schemes are under way.

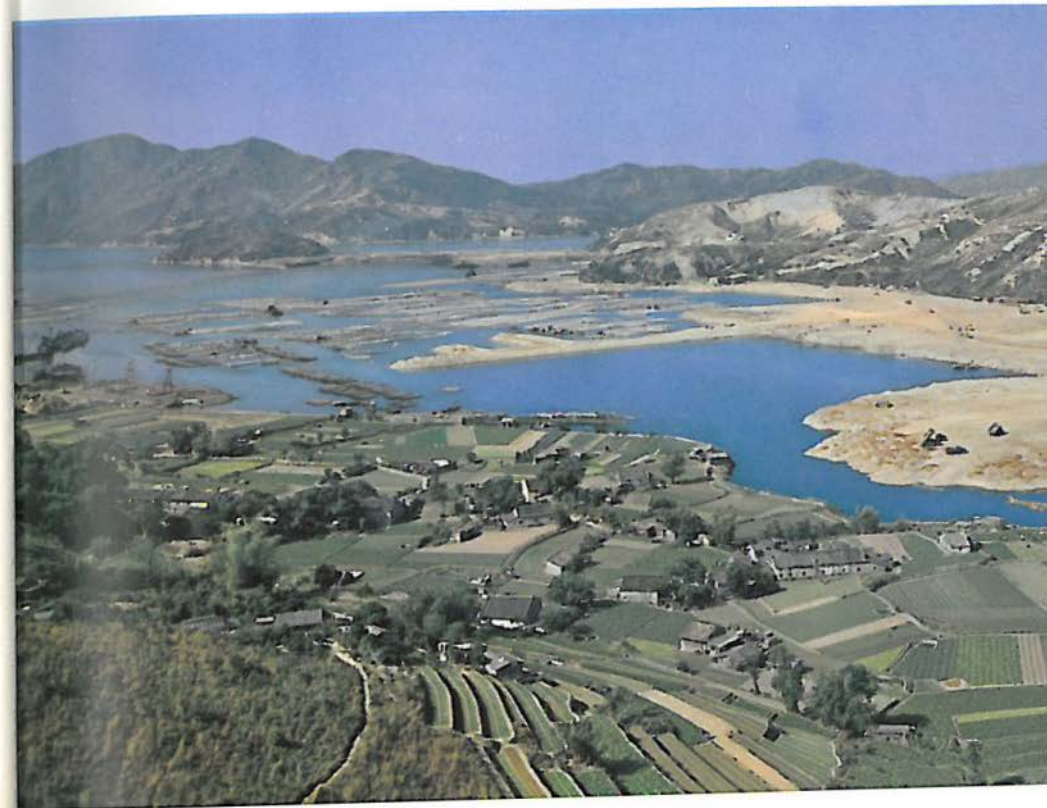
By far the biggest and most important of these is the Plover Cove water conservation project. Here a vast artificial lake will be made in the north-east of the Colony by sealing off a sea-water inlet and storing 30,000 million gallons of usable water. Plover Cove is expected to increase storage by 200% at a total cost of some \$550 million, and will be the most expensive undertaking ever embarked upon in Hong Kong's history.

The Plover Cove contract was awarded to the French builders of the Mont Blanc Tunnel, Société Française d'Entreprises de Dragages et de Travaux Publics. Dragages will close the 2,750-acre inlet by building a dam a mile and a quarter long, and two subsidiary dams linking the surrounding islands.



Communications

Land reclamation

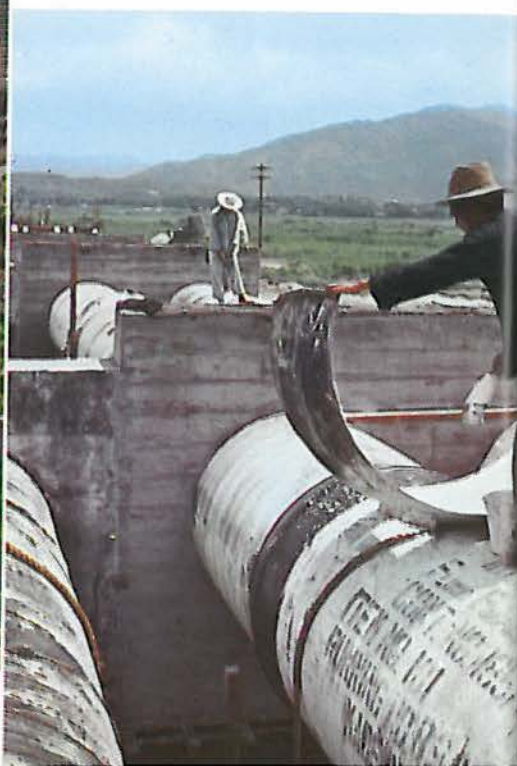




Building up hillside



Laying water pipelines



Dolls' limbs



Modern consumer goods



Traditional furniture



When the dams are completed, the sea water will be pumped out and the residue diluted by diverting flood water from nearby streams and rivers into the newly formed reservoir. Plover Cove also calls for 20 miles of tunnels, a 900 million gallon balancing reservoir, which is almost complete, a treatment works, said to be among the largest in the world, the damming of three streams, and driving a road tunnel and pipelines a mile long through the Kowloon foothills.

Plover Cove and the East River scheme will eventually be linked by yet another plan, that of drawing water from the flood areas of the River Indus, again in the north of the Colony. To achieve this a novel method is being adopted. Three collapsible dams made of neoprene-coated nylon, which are inflated by combined air and water pressure and so arranged to deflate during periods of excess flows, have been purchased from the United States. It is estimated that some 200 million gallons a day can be drawn from this source under flood conditions, and this idea of utilising river flood-water may be adopted in other parts of the Colony.

Meanwhile, a Water Resources Survey team has been formed to investigate possible natural resources, a study of which is expected to take three years. Its terms of reference also include investigation of a scheme to distil sea water by using waste-heat from a large refuse-incinerator being constructed in Kowloon. It has been estimated that this could give Hong Kong an additional two to three million gallons a day.

At present, some \$110 million of the entire public works annual expenditure of about \$450 million goes towards water conservation projects.

Electricity

The Colony's two electricity suppliers went ahead with plans to meet the ever-increasing demand for power. China Light & Power Co. Ltd., which supplies demand on Kowloon (mainland) side, concluded an agreement with Esso Standard Eastern Inc., involving an Esso investment of at least HK\$220 million, and anticipating a 720 megawatt rise in output as the initial target. Hong Kong Electric Co. Ltd., which operates on the Island itself, is installing 120 MW of generating plant to supplement its present capacity of 225 MW, at a capital cost of \$96 million. This is expected to meet electricity demand on the Island up to 1968, and, beyond that period, the Company plans another generating station with 700-800 MW capacity. Doubling of demand on the Island is calculated to take place during the next five years, again over the following seven years, and once more in the decade after that.

The figures for the year's trading are as follows:

	1963	1964	H.K.\$ Millions	
	Value	Value	Value Change	% Change
Imports	7,411.94	8,550.56	+ 1,138.62	+ 15.4
Exports	3,831.03	4,427.62	+ 596.59	+ 15.6
Re-exports	1,160.20	1,355.95	+ 195.75	+ 16.9
Total Trade	12,403.17	14,334.13	+ 1,930.96	+ 15.6
Total Exports	4,991.23	5,783.57	+ 792.34	+ 15.9
Balance of Trade (Unfavourable)	2,420.71	2,766.99	+ 346.28	

The following points should be noted:

1. The high rate of increase in trading figures is accounted for to a great extent by rising wages and other industrial costs, which boosted the value of imports and exports over and above the real increase in volume of commodities shipped. Further, although 1964 saw a definite improvement in the Colony's prosperity and general economic condition, such improvements are a necessary counter-weight to the acute problems of population and living-space from which Hong Kong suffers.
2. The Colony's invisible earnings have in the past shown themselves able to cope with an unfavourable balance of trade. High on the list of such earnings is income from tourists, attracted not only by the great beauty and intrinsic interest of Hong Kong, but also by its fame as a world shopping centre deriving from Free Port status. In 1964 there were 364,065 visitors to the Colony, not counting overseas Chinese and travellers arriving from China.

The backbone of the economy, the textile industry, continued to expand during the year, and to account for just over half of total exports, despite the extensive restrictions imposed upon it by some major importing nations. Garments in particular had a buoyant year, receiving powerful impetus from cotton trousers, slacks, jeans and shorts, as well as from knitted woollens, such as pullovers, cardigans, etc. In the cotton spinning industry, the total measure of expansion was about 90,000 spindles, involving a rise in production of cotton yarn of some 8% over the previous year. There was an increasing demand for coarse counts, but demand for fine counts fell, owing to the shortage of skilled labour in the weaving

and garment industries, as well as to the knitting industry's failure to sustain the boom conditions of 1963. An important feature of the year was the growing production of synthetic fabrics, in keeping with the world trend.

Plastic flowers, fruit and foliage — principally flowers — were the second largest export earner in 1964 after clothing, the bulk of shipments going to the United States. However, there were signs towards the end of the year that some producers were feeling adverse effects of excessive production. Plastic toys and dolls were close behind as third best export earner. Present emphasis in this industry is on improvement of quality, as manufacturers expect growing price wars soon with other South East Asian producers, such as Taiwan and Malaysia. A very successful recent line has been toy racing cars, powered by various types of motor. The plastics industry was involved in controversy with Government over classification of stored plastic materials as potential fire risks.

The spectacularly successful transistor radio industry expanded still further in 1964, having built up in eight years to a stage where it employs some 3,000 technical workers spread over thirty or more factories. Main export markets are the United States and Britain. Components are also being produced in increasing quantities, as well as other electronic items, and overseas capital and management are particularly common in this industry. However, price shaving in small transistor radios seems to be approaching its economic limits, and future growth may lie in more sophisticated products.

Other significant export earners include such longer-established items as imitation jewellery, rattan articles and enamelware. This last has shown a downward trend in recent years: a main reason for the falling-off of enamelware exports is the establishment of factories — often Hong Kong owned — in under-developed nations, particularly Africa, which has deprived the local industry of some of its semi-skilled labour, whilst at the same time cutting into export demand.

The electric torch industry — which includes a plant with the largest capacity in the world — improved its performance over the year before, but failed to equal the peak attained in 1961; intense U.S. competition helps account for this. Sugar had a difficult year, as world prices plunged below the cost of production. Footwear contributed greatly to the general advance of exports, particularly plastics, which more than doubled, though rubber-soled canvas shoes are still the biggest earner.

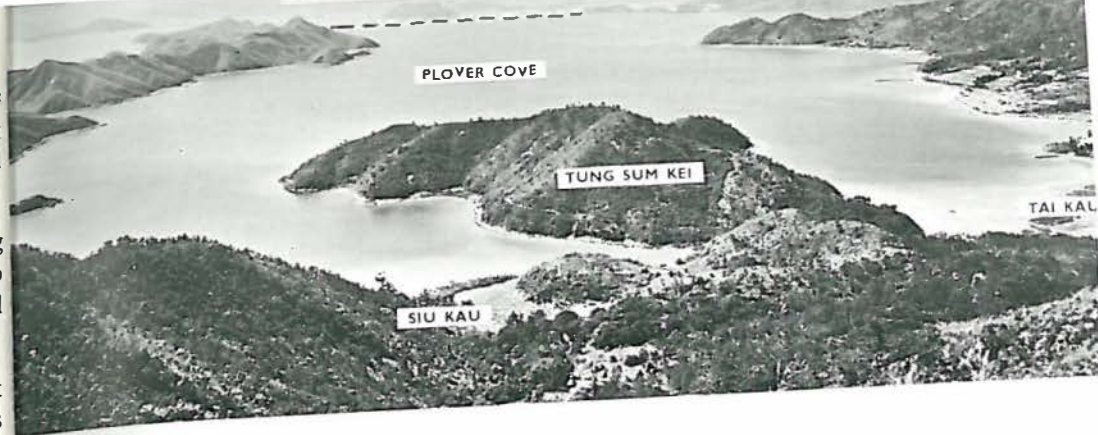
Steel-rollers suffered from a shortage of ships for breaking: a total of 25 vessels were broken up during the year. This was a continuing effect of rumours in late 1963 that Soviet bloc countries were planning big grain imports from the non-communist world. To compensate for the shortage of ships, rolling materials were imported from Britain and Australia, which helps account for the year's rise in iron and steel imports. The increase is also attributed to purchases from

abroad by the building industry, whose needs Hong Kong rollers were unable fully to supply. In non-ferrous metals, Hong Kong firms were able to do a brisk trade, particularly in brass scrap purchased locally or in South East Asia and sold in Japan.

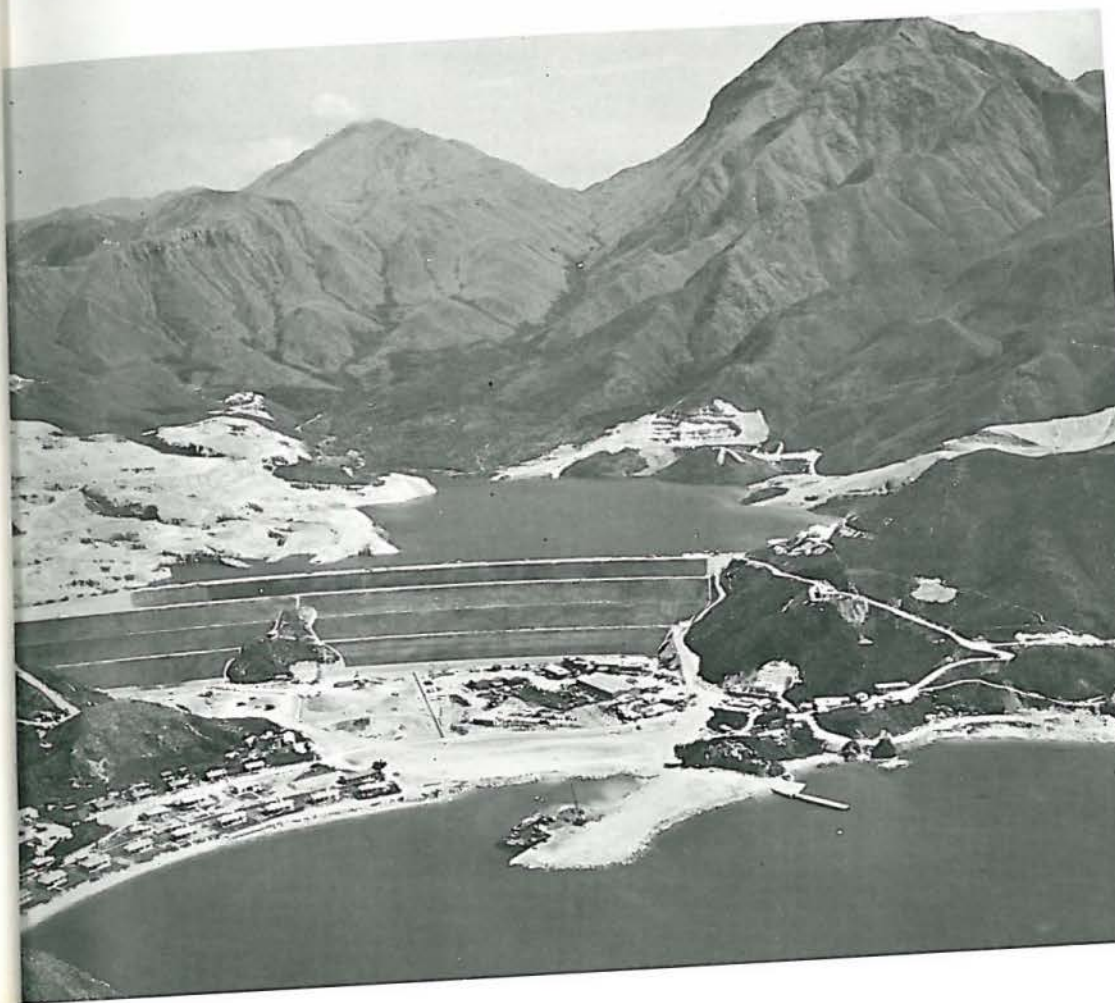
A new steel pipes plant was opened on the small rural island of Peng Chau. This plant is turning out pipes in diameters ranging from half an inch to five feet, to be used for water, gas and oil, as well as for piling casings. Rigid P.V.C. pipes are also being produced for use in plumbing systems.

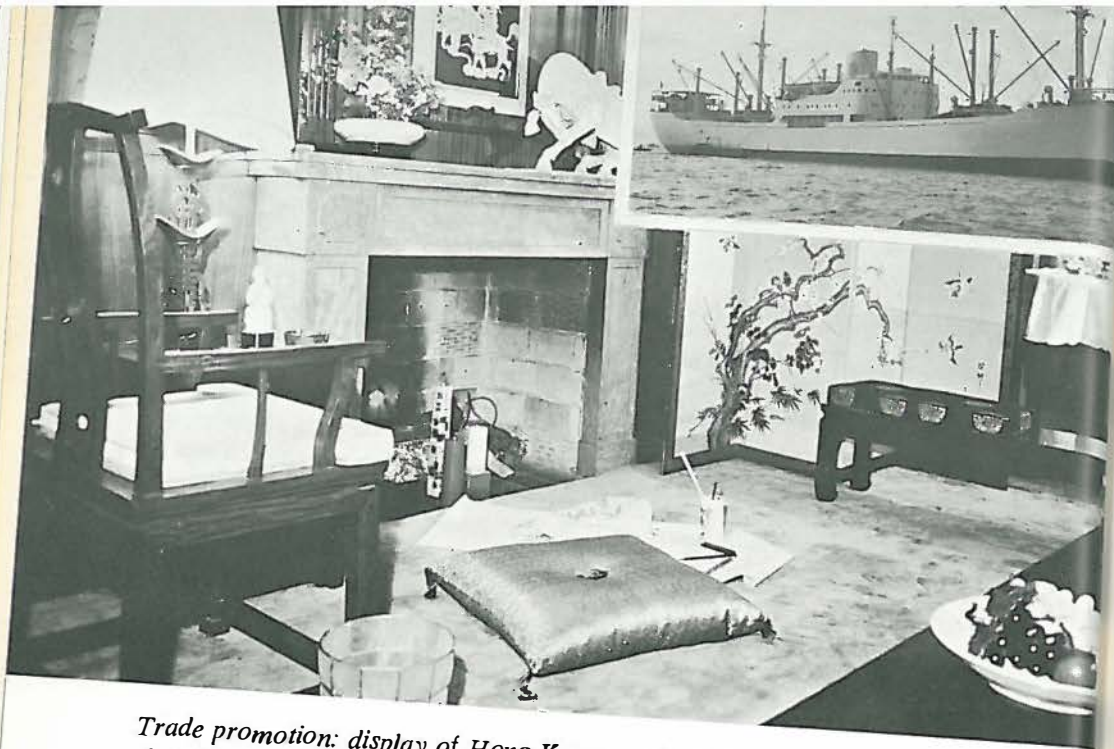
Trade in China products through Hong Kong is only a fraction of what it used to be in the days when the Colony founded its development on its status as an entrepot centre between the interior and the Western world. However the year was notable for developments in the Chinese attitude towards this trade: there was closer attention to world market conditions, greater selectivity about products exported, and a general improvement in variety and quality. The price of hog-casings was drastically reduced during the year, enabling China to capture a large area of the market from American and Danish suppliers; there was also a lively demand for other animal by-products, particularly hair and wool. Metals, especially antimony and tungsten, benefitted from rising world demand, and the variety of chemical exports was improved. An unusual feature was the growing production of tropical products for export — such as coffee beans — on Hainan Island and in Yunnan province.

Further analysis of exports of Hong Kong products and other aspects of the year's trading is presented statistically in the tables which follow, with comparative figures for previous years.



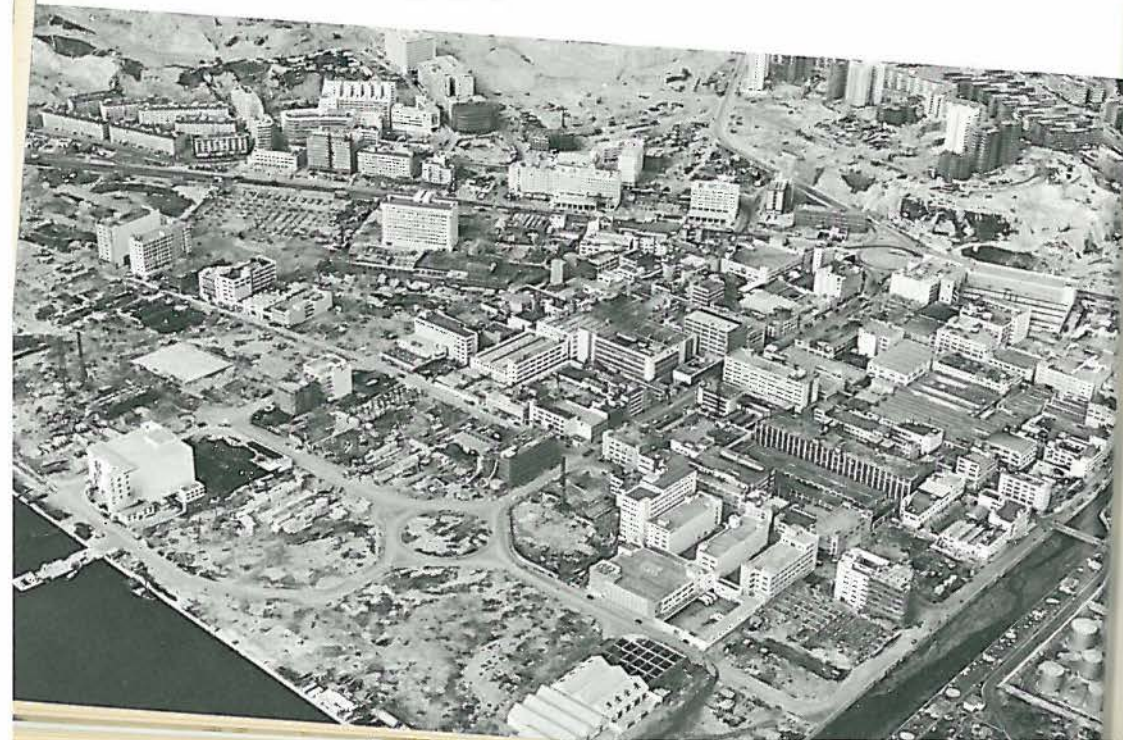
Water conservation: Plover Cove (above), where villages of Siu Kau and Tai Kau will be flooded to provide reservoir. Below: Shek Pik.





Trade promotion: display of Hong Kong products aboard MS Ceylon, with inset showing vessel.

Kwun Tong industrial town



PRINCIPAL HONG KONG TEXTILES AND CLOTHING EXPORTS

1961 — 1964

(HK\$ Millions)

	1964	1963	1962	1961
1. CLOTHING	1,619.7	1,382.9	1,147.4	862.1
Outerwear, other than knitted	513.7	411.9	363.6	277.3
Shorts, jeans, trousers, overalls, pinafores	208.8	219.5	203.7	159.3
Blouses and jumpers, not embroidered	61.6	57.3	47.3	34.7
Children's outer garments	94.1	46.1	29.0	19.2
Suits, jackets, uniforms & overcoats, men's & boys'	34.6	30.4	26.7	23.6
Underwear and nightwear, other than knitted	341.6	316.6	294.2	230.3
Shirts, not knit	247.2	211.1	202.9	159.5
Outerwear, knitted	359.2	268.8	172.3	83.3
Jackets, jumpers & sweaters	337.4	259.4	166.3	78.0
Underwear & nightwear knitted	137.8	127.4	107.6	105.8
Cotton underwear	61.3	63.7	52.0	51.5
Shirts, knit	63.6	52.4	46.5	43.8
Gloves and mittens	125.9	108.4	86.7	62.6
Clothing n.e.s.	63.4	58.6	53.7	53.2
Brassieres	46.7	35.9	32.8	27.9
Clothings of impermeable materials	56.8	72.2	49.7	33.3
Stocking and hose	15.5	12.6	12.1	8.8
Headwear	5.8	6.0	7.4	7.5
2. TEXTILE YARN, FABRICS & MADE-UP ARTICLES	706.7	648.3	590.3	669.0
Cotton piecegoods	463.4	434.1	370.2	431.0
Cotton yarn	85.4	67.8	73.8	108.1
Towels, not embroidered	41.5	39.0	34.5	25.8
Bed linen, table linen & towels embroidered	8.4	8.4	10.8	22.0

EXPORTS OF SELECTED HONGKONG OUTERWEAR

1961 — 1964

	Value in HK\$ '000				Quantity in '000 dozens			
	1964	1963	1962	1961	1964	1963	1962	1961
1. JACKETS, JUMPERS & PULL-OVERS (KNIT)								
Total :	345,074	259,418	166,511	78,048	2,613	1,986	1,381	867
U.K.	90,565	94,713	67,095	25,239	841	776	549	254
W. Germany	96,532	59,844	27,799	11,846	746	465	213	91
U.S.A.	73,238	49,271	36,194	10,260	326	193	125	94
Sweden	23,161	20,970	13,835	8,121	176	170	108	66
Netherlands	9,014	7,273	4,021	1,634	69	53	29	11
Norway	4,650	4,878	3,090	1,412	33	37	25	12
Switzerland	8,188	3,464	3,169	1,827	53	23	23	14
Denmark	4,360	2,110	682	243	28	17	4	1
Malaya	1,535	1,839	672	917	17	18	10	16
Thailand	1,465	1,740	2,891	2,889	46	71	134	145
Italy	3,157	1,157	539	126	18	6	4	1
Canada	1,624	1,123	868	117	8	8	11	2
Others	27,585	11,036	5,656	13,417	252	149	146	160

EXPORTS OF SELECTED HONG KONG OUTERWEAR

1961 — 1964

	Value in HK\$ '000				Quantity in '000 dozens			
	1964	1963	1962	1961	1964	1963	1962	1961
2. SLACKS, SHORTS, JEANS & TROUSERS (NOT KNIT)								
Total :	295,129	201,409	203,748	159,349	6,948	4,579	4,695	3,879
U. S. A.	127,480	100,852	90,277	73,783	2,808	2,260	2,275	1,709
U. K.	83,231	55,678	51,844	44,485	1,860	1,286	1,212	1,156
Canada	12,957	10,132	15,804	13,866	273	214	350	298
W. Germany	25,536	9,513	10,870	6,567	555	174	207	119
Papua & New Guinea	4,995	3,933	3,233	2,230	144	101	88	62
Sweden	4,422	2,747	4,501	2,684	96	48	72	55
Denmark	3,140	1,334	1,678	795	82	29	36	14
Netherlands	2,346	1,242	1,895	933	59	22	32	23
Switzerland	1,562	1,228	881	425	28	18	15	7
Persian Gulf Sheikdoms	4,039	1,163	837	739	132	36	26	19
Others	25,421	13,587	21,928	12,842	911	391	382	417

EXPORTS OF HONG KONG PLASTIC FLOWERS, FOLIAGE & FRUIT

1961 — 1964

	(HK\$ '000)			
	1964	1963	1962	1961
TOTAL :	270,613	216,110	197,085	171,829
U. S. A.	226,602	174,684	152,512	133,646
U. K.	12,121	12,782	12,757	16,677
Japan	4,701	7,901	5,446	362
Canada	10,072	6,714	9,737	6,582
Australia	5,908	4,299	7,288	6,497
W. Germany	2,304	1,585	1,646	844
Belgium	2,191	1,451	1,412	1,227
South Africa	1,065	767	493	669
Others	5,649	5,927	5,794	5,325

EXPORTS OF HONG KONG PLASTIC TOYS & DOLLS

1961 — 1964

	(HK\$ '000)			
	1964	1963	1962	1961
TOTAL :	242,909	170,906	138,399	113,952
U. S. A.	99,899	66,657	48,570	39,515
U. K.	67,103	50,710	43,045	35,615
Canada	15,053	9,126	6,644	4,837
Australia	10,294	6,629	7,054	4,114
S. Africa	5,041	4,283	2,525	1,973
Venezuela	4,807	4,014	3,283	2,151
W. Germany	6,195	3,964	3,690	3,755
Netherlands	5,891	3,320	2,901	2,438
Malaya	1,502	2,326	3,438	4,169
Sweden	3,637	1,972	1,825	1,675
Belgium	2,505	1,524	1,424	1,596
Denmark	1,799	1,158	1,302	1,601
Italy	2,797	1,105	747	842
Norway	1,177	1,011	1,045	1,169
Irish Rep.	1,050	529	413	274
Japan	1,376	1,057	411	34
Others	12,783	11,511	10,082	8,194

EXPORTS OF HONG KONG SHIRTS (NOT KNITTED)

1961 — 1964

	Value in HK\$ '000				Quantity in '000 dozens			
	1964	1963	1962	1961	1964	1963	1962	1961
Total :	247,197	211,060	202,897	159,490	4,457	3,887	4,041	3,215
U. K.	55,139	51,007	46,628	34,293	983	874	900	704
U. S. A.	63,241	44,253	54,862	34,848	1,192	892	1,197	783
W. Germany	30,599	25,430	25,495	24,787	590	535	491	445
Malaya	15,789	17,810	16,194	16,421	195	222	190	189
Kenya	4,667	8,508	6,667	7,031	73	150	155	154
Pers. Gif. Shkdm.	1,115	5,741	3,920	2,112	18	91	72	45
Canada	9,752	4,981	5,415	3,346	211	117	137	75
Nigeria	3,095	4,031	4,746	3,160	53	71	78	64
Netherlands	6,199	3,929	2,301	1,146	91	72	47	24
Aden	3,143	3,553	2,327	1,873	63	67	52	42
Denmark	5,062	3,071	3,856	1,997	93	60	74	39
Sweden	4,377	2,112	1,570	1,621	87	50	36	40
Ghana	778	2,049	888	2,980	12	31	17	59
Africa n.e.s.	113	1,895	1,351	410	2	34	24	7
Norway	1,949	1,858	2,756	2,390	55	47	76	65
Ethiopia	854	1,817	1,221	2,018	30	59	39	65
Papua and New Guinea	2,007	1,658	1,485	1,149	48	36	31	26
Tanganyika	1,459	1,632	1,848	2,157	26	33	44	49
Switzerland	2,025	1,070	1,193	606	45	17	21	11
Jamaica	—	83	1,223	—	—	1	33	—
Spain	1,676	270	3	—	30	4	12	—
Others	34,158	24,302	16,948	15,145	560	424	315	329

EXPORTS OF LEADING HONG KONG SHOES

1961 — 1964

	Value in HK\$ '000)				Quantity in dozens of pairs			
	1964	1963	1962	1961	1964	1963	1962	1961
1. RUBBER-SOLED CANVAS SHOES								
Total:	61,511	55,786	61,861	52,848	2,077,637	1,882,504	2,060,009	1,790,547
U.K.	30,097	30,454	23,523	30,884	1,074,644	1,075,873	854,640	1,103,796
Canada	5,795	6,014	8,130	4,278	210,777	227,796	297,079	144,962
U.S.A.	5,415	4,286	15,469	5,434	151,889	119,529	443,998	149,715
W. Germany	6,049	3,573	4,120	2,786	232,774	133,413	154,561	100,302
Netherlands	3,232	3,213	3,264	1,563	102,994	99,502	104,556	65,091
Sweden	4,553	2,675	866	284	136,541	76,854	24,586	8,338
Belgium	1,008	768	786	1,286	31,464	23,335	24,482	39,504
Others	5,362	4,803	5,703	6,333	136,554	126,202	156,107	178,839
2. PLASTIC FOOTWEAR								
Total:	48,162	19,214	12,227	7,814	1,676,955	817,271	450,021	292,232
U.K.	28,088	4,646	2,259	746	586,262	100,608	57,694	22,668
Sudan	675	1,722	1,369	45	41,040	84,901	51,235	1,748
Sierra Leone	1,905	1,617	1,663	1,552	105,430	81,129	75,845	52,169
Aden	3,200	1,470	330	39	187,625	84,928	15,908	1,142
Nigeria	180	1,197	1,531	288	7,511	51,482	60,463	10,671
Malaya	130	1,045	206	30	3,956	43,436	8,035	1,310
Saudi Arabia	1,322	1,010	186	17	88,395	58,640	9,315	421
Liberia	1,028	911	377	199	64,060	58,238	18,975	10,340
Ghana	—	900	1,061	2,971	—	54,655	42,995	127,518
Pakistan	2,536	14	6	9	153,007	581	197	200
Ethiopia	1,045	528	5	—	51,447	24,334	182	—
Others	8,053	4,154	3,234	1,918	388,222	174,339	109,177	64,045

EXPORTS OF HONG KONG ELECTRIC TORCHES

1961 — 1964

	Value in HK\$'000				Quantity in dozens			
	1964	1963	1962	1961	1964	1963	1962	1961
	Total:	47,503	46,194	40,980	48,030	3,016,354	2,796,056	2,520,985
U.K.	5,070	4,382	2,801	3,763	456,870	456,606	302,110	391,883
Thailand	2,510	2,907	2,799	3,156	93,113	119,866	111,037	137,902
Burma	272	2,186	1,684	1,274	7,981	67,442	39,148	31,556
Malaya	2,060	2,072	2,045	2,668	72,767	76,061	88,132	122,911
Canada	1,284	1,790	1,691	1,657	60,205	93,735	102,292	93,078
South Africa	1,801	1,750	1,770	1,319	83,932	79,924	73,783	55,650
U.S.A.	3,220	1,585	3,487	3,677	262,102	142,252	283,093	309,883
Australia	1,653	1,575	1,124	1,392	90,171	82,908	51,045	65,032
Nigeria	1,190	1,524	1,004	1,734	154,591	175,682	113,273	179,959
Italy	1,433	1,497	1,362	1,420	114,656	119,434	117,554	152,908
Venezuela	2,821	1,450	1,302	2,183	96,482	52,403	65,411	68,039
Pakistan	1,695	1,352	809	1,365	92,307	82,263	48,252	84,904
Ceylon	875	1,301	1,087	1,627	24,497	35,079	29,432	44,770
W. Germany	1,484	1,238	884	630	101,282	89,325	66,461	64,076
Kenya	989	1,058	813	645	46,679	50,903	39,397	32,363
Netherlands	1,224	889	836	667	90,882	61,380	66,634	64,070
Philippines	904	873	631	501	84,962	71,313	49,647	28,479
Sweden	1,030	850	767	788	89,857	66,287	60,517	62,898
Spain	1,042	1,031	3	—	98,346	59,567	325	—
Colombia	5	292	2,089	1,682	184	11,265	76,317	49,156
Others	14,931	14,592	11,992	15,882	894,488	802,361	737,125	858,853

EXPORTS OF HONG KONG HOUSEHOLD ENAMELWARE

1961 — 1964

(HK\$ '000)

	Value in HK\$'000				Numbers			
	1964	1963	1962	1961	1964	1963	1962	1961
Total:	95,130	68,342	36,314	12,704	3,946,944	2,551,910	1,040,952	263,423
U.K.	34,914	31,827	11,998	5,257	1,345,243	1,159,461	322,505	102,150
U.S.A.	46,629	25,027	18,206	2,529	2,101,861	1,036,897	595,066	73,868
Canada	2,655	1,761	707	254	117,828	68,664	21,526	7,112
W. Germany	1,648	1,535	919	71	74,908	57,074	17,761	1,421
Panama	1,268	937	1,139	2,875	29,310	18,350	16,350	49,664
Venezuela	1,215	707	12	6	26,120	11,820	300	100
Spain	1,099	—	—	—	39,924	—	—	—
Others	5,702	6,548	3,333	1,712	211,750	199,644	67,444	29,108

EXPORTS OF HONG KONG TRANSISTOR RADIOS

1961 — 1964

	Value in HK\$'000				Numbers			
	1964	1963	1962	1961	1964	1963	1962	1961
Total:	17,166	17,687	16,811	15,081	17,166	17,687	16,811	15,081
U.K.	1,046	169	2,455	1,860	1,046	169	2,455	1,860
Ceylon	328	571	1,573	3,578	328	571	1,573	3,578
Ghana	715	761	1,517	430	715	761	1,517	430
Dominican Rep.	—	—	—	—	—	—	—	—
Others	17,166	17,687	16,811	15,081	17,166	17,687	16,811	15,081

EXPORTS OF HONG KONG IMITATION JEWELLERY

1961 — 1964

(HK\$ '000)

	1964	1963	1962	1961
Total :	30,460	29,206	34,236	30,076
U. K.	7,059	10,046	14,841	16,338
U. S. A.	12,924	8,309	8,853	7,996
Nigeria	2,028	2,875	1,933	657
Australia	1,186	1,055	2,169	1,192
South Africa	621	610	670	96
Canada	1,169	526	488	535
Others	5,473	5,985	5,282	3,262

EXPORTS OF HONG KONG RATTAN FURNITURE

1961 — 1964

(HK\$ '000)

	1964	1963	1962	1961
Total :	23,269	24,678	27,953	25,058
U. S. A.	12,194	12,548	14,898	13,890
Australia	2,366	3,699	4,333	2,718
U. K.	2,219	1,670	2,295	2,262
W. Germany	1,272	1,579	1,329	1,227
Canada	1,570	1,221	1,442	1,169
Others	3,648	3,961	3,656	3,792

COMPARISON OF VALUES OF IMPORTS,
EXPORTS AND RE-EXPORTS OF MERCHANDISE

By countries for the years 1963 — 1964

(HK\$)

COUNTRY	IMPORTS		EXPORTS OF HONG KONG PRODUCTS		RE-EXPORTS	
	1963	1964	1963	1964	1963	1964
BRITISH COMMONWEALTH						
Aden	185,630	200,717	21,342,860	24,805,511	4,533,442	8,184,863
Australia	193,089,896	229,482,597	84,350,898	112,508,611	43,893,022	27,993,530
Brunei	493,281	1,011,651	2,479,487	2,642,121	3,759,507	4,913,868
Canada	97,480,374	118,502,603	85,275,478	115,895,828	11,794,702	12,304,880
Federation of Rhodesia and Nyasaland	16,916,528	15,189,041	8,875,785	10,260,240	115,620	449,346
Ceylon	8,436,990	7,024,862	11,807,837	11,457,002	13,488,335	2,616,877
Cyprus	62,615	115,772	5,550,027	3,264,987	85,875	131,451
Fiji	118,983	67,373	7,326,927	9,150,565	235,588	474,517
Gambia	—	1,625,518	1,204,460	3,578,931	14,975	150,730
Ghana	—	145,712	23,537,687	23,743,264	1,998,677	3,646,313
Gibraltar	—	—	4,385,107	5,317,880	443,631	720,695
India	47,813,632	49,813,803	5,644,145	1,359,825	3,883,774	2,461,660
Jamaica	286,174	226,430	7,699,712	9,116,467	604,032	591,345
Kenya	22,538,075	23,444,236	26,037,334	18,964,466	288,757	265,459
Malaya	197,270,341	278,769,257	269,941,007	260,409,850	212,538,403	251,152,256
Malta	—	3,472	2,821,707	5,000,453	60,420	18,649
Mauritius	42,679	61,211	9,425,138	10,348,248	1,046,578	2,583,418
New Zealand	10,021,516	13,013,308	54,661,472	58,678,306	5,910,086	6,243,570
Nigeria	3,342,704	10,257,146	64,491,957	50,039,771	2,330,103	4,104,578
North Borneo	32,006,864	42,761,740	67,221,839	58,655,787	14,228,192	15,618,679
Pakistan	174,377,421	177,360,029	7,684,565	11,383,468	10,257,919	8,595,850
Sarawak	27,883,493	22,159,836	10,878,471	11,077,421	17,861,501	14,563,943
Sierra Leone	—	—	8,533,784	10,286,123	62,142	264,488
South Africa	73,076,930	71,617,369	51,643,316	56,393,195	9,782,964	6,178,605
Tanganyika	49,104,020	52,091,622	5,004,388	4,703,133	300,366	352,162
Trinidad & Tobago	217,720	322,918	10,630,922	11,752,043	303,340	357,244
Uganda	40,058,201	28,370,158	4,539,839	3,482,732	75,611	67,041
Kingdom United	859,853,578	838,275,696	863,837,286	968,657,025	43,202,912	55,026,959
Zanzibar	3,743,637	6,541,141	2,348,751	1,443,357	87,698	16,909
British Oceania n.e.s	503,555	299,174	2,017,158	2,879,849	197,797	434,147

COMPARISON OF VALUES OF IMPORTS,
EXPORTS AND RE-EXPORTS OF MERCHANDISE

By countries (continued)

	IMPORTS		EXPORTS OF HONG KONG PRODUCTS		RE-EXPORTS	
	1963	1964	1963	1964	1963	1964
BRI. COM- MONWEALTH (Cont.)						
British Carib- bean Terri- tories, n.e.s.	6,539	89,263	5,321,716	6,283,920	173,720	150,539
West In- dies Federa- tion, n.e.s.	44,029	14,140	4,466,436	5,026,074	12,069	21,906
Papua and New Guinea	80,117	36,417	16,223,741	18,750,440	1,167,116	2,116,875
British Com- monwealth, n.e.s.	34,165	1,625,518	709,713	3,578,931	95,971	150,730
ASIA						
Burma	34,141,954	14,953,261	22,351,316	3,363,431	12,638,992	10,097,153
Cambodia	71,563,608	52,225,148	17,793,794	12,763,915	43,662,103	22,944,810
China (exclud- ing Formo- sa)	1,486,917,103	1,969,979,114	8,278,063	13,012,621	61,821,863	46,707,913
Formosa (Tai- wan)	172,190,076	178,466,248	9,156,340	15,444,482	50,477,014	54,628,535
Indonesia	56,819,464	71,325,020	42,461,555	53,135,804	44,463,034	207,144,243
Iran	48,126,885	40,184,610	12,373,294	8,913,408	1,701,975	2,548,035
Iraq	266,400	—	1,095,016	1,474,365	135,530	24,697
Israel	73,822,452	32,694,917	881,443	631,933	15,120,357	9,060,775
Japan	1,239,199,711	1,549,335,852	120,563,085	118,489,922	185,273,385	199,064,565
Jordan	3,640	25,605	3,209,588	2,222,361	476,291	1,195,271
Laos	230,879	109,467	2,968,265	3,694,697	6,137,486	6,505,852
Lebanon	222,930	321,594	9,157,711	8,645,409	1,919,505	1,450,487
Macau	51,270,155	51,005,628	24,302,833	25,291,280	63,105,653	64,131,024
North Korea	4,280,815	9,758,712	1,269	19,030	464,079	2,574,843
North Viet- nam	18,877,516	21,307,042	922,858	505,395	10,813,616	9,130,221
Persian Gulf Sheikdoms	18,285,445	15,837,393	29,029,629	31,035,743	6,585,948	7,371,228
Philippines	17,288,767	16,758,418	22,773,444	24,191,368	31,976,159	40,250,196
Saudi Arabia and Yemen	13,744,687	14,016,726	14,634,161	17,864,480	930,944	1,457,724
South Korea	49,264,168	56,973,253	1,771,950	838,808	17,263,096	21,701,486
South Viet- nam	47,808,302	14,526,909	7,614,214	9,389,181	12,904,851	14,199,163
Syria	4,304,462	7,032,943	3,559,864	931,317	814,053	1,037,155
Thailand	266,198,002	267,389,360	76,944,998	91,026,987	33,053,701	35,793,518
Asian Coun- tries, n.e.s.	13,453	—	1,001,908	1,777,097	698,331	1,263,719

COMPARISON OF VALUES OF IMPORTS,
EXPORTS AND RE-EXPORTS OF MERCHANDISE

By countries (continued)

	IMPORTS		EXPORTS OF HONG KONG PRODUCTS		RE-EXPORTS	
	1963	1964	1963	1964	1963	1964
EUROPE						
Albania	—	—	—	—	—	—
Austria	12,406,931	13,688,005	1,703,102	7,863,064	10,644	35,980
Belgium	151,502,074	95,312,680	14,326,460	19,275,242	29,567,628	19,795,609
Bulgaria	8,076,372	2,243	1,719	3,250	—	26,919
Czechoslovakia	11,796,037	9,964,192	562,200	273,382	—	—
Denmark	15,241,644	18,859,579	23,795,212	36,843,703	1,233,736	1,396,738
Finland	6,950,883	6,403,943	5,359,440	8,015,710	65,436	298,139
France	59,751,357	71,538,919	11,450,281	17,646,710	4,575,980	5,087,933
Germany (Eastern)	8,766,897	4,322,705	116,013	41,262	5,500	—
Germany (Western)	193,634,369	246,783,166	217,262,240	294,147,065	10,006,869	8,833,071
Greece	78,594	1,319,251	4,108,520	3,669,403	133,352	772,239
Hungary	8,844,518	742,185	456	2,350	—	1,177
Iceland	—	—	768,745	1,245,797	—	8,907
Irish Republic	119,200	239,114	3,466,415	6,403,801	197,839	112,460
Italy	120,173,203	164,915,880	34,898,881	41,527,219	13,189,576	20,969,538
Netherlands	131,500,912	137,076,405	43,925,893	57,170,348	5,222,603	4,255,607
Norway	10,088,505	14,003,505	22,676,948	24,508,745	3,112,945	3,268,417
Poland	6,203,908	5,298,587	40,772	30,303	—	—
Portugal	2,157,594	1,840,258	1,030,404	1,424,349	482,054	95,811
Rumania	21,912	—	18,201	5,400	—	—
Spain	3,334,702	1,722,462	3,247,844	11,216,116	500,036	1,066,048
Sweden	30,502,203	41,330,514	64,346,058	77,972,859	768,119	819,879
Switzerland	166,607,310	173,827,933	14,797,804	23,685,211	6,307,781	7,494,037
U.S.S.R.	9,889,230	8,832,595	275,087	258,743	538	—
Turkey	885,144	2,399,853	1,174,976	1,072,964	10,599	13,362
Yugoslavia	264,135	518,195	2,198	68,814	1,458	43,026
AMERICA						
Argentina	4,596,411	9,817,723	477,181	974,625	48,643	88,564
Bolivia	—	—	800,666	1,176,757	13,817	29,141
Brazil	69,808,807	72,926,044	333,294	226,899	17,100	36,333
Chile	—	—	1,020,717	1,282,853	111,433	69,863
Colombia	—	42,750	2,253,117	3,629,800	16,210	7,850
Costa Rica	7,500	—	1,485,938	1,096,608	50,906	34,041

COMPARISON OF VALUES OF IMPORTS,
EXPORTS AND RE-EXPORTS OF MERCHANDISE

By countries (continued)

	IMPORTS		EXPORTS OF HONG KONG PRODUCTS		RE-EXPORTS	
	1963	1964	1963	1964	1963	1964
	AMERICA (Cont.)					
Cuba	6,600	8,050	22,673	—	6,000	41,310
Dominican Rep.	—	—	3,807,456	3,863,522	287,010	346,041
Ecuador	119,546	145,462	2,324,156	2,862,947	68,546	123,646
El Salvador	2,850,551	863,009	2,483,775	2,862,728	22,923	125,082
French & Nether- lands West Indies	1,978,091	1,849,100	8,086,697	11,193,586	1,870,502	2,861,069
Guatemala	3,097,163	21,536,156	1,732,983	1,306,557	53,365	67,592
Haiti	—	—	1,542,281	1,246,022	158,817	38,876
Honduras	144,500	—	2,396,244	1,398,204	50,092	47,158
Mexico	19,493,673	16,571,865	5,584,123	5,092,536	1,473,190	1,455,103
Nicaragua	2,922,972	2,915,566	2,596,108	1,862,209	36,326	135,139
Panama	2,140,315	4,332,049	18,572,585	21,945,260	4,431,966	4,084,015
Paraguay	—	106,850	852,562	440,889	15,055	26,600
Peru	496,240	1,885,103	4,530,089	4,976,718	847,928	695,345
U. S. A.	784,395,139	983,014,577	973,750,263	1,227,243,953	37,093,597	46,490,854
Uruguay	6,711,266	14,816,511	418,646	654,897	28,603	3,794
Venezuela	299,744	387,104	18,979,280	24,236,759	722,801	1,343,671
AFRICA						
Algeria	58,004	327,699	1,733,400	2,849,139	1,119,983	3,693,394
Congo Republic	—	1,107,760	4,879,815	6,434,118	31,468	65,316
United Arab Rep. (Egypt)	1,641,922	1,866,785	773,196	973,097	103,608	105,683
Ethiopia	2,816	55,491	8,120,939	8,071,867	44,836	43,861
French Com- munity: Equa- torial Africa	—	—	2,785,449	3,464,082	19,820	10,924
Libya	—	—	6,395,022	8,318,755	122,281	250,017
Malagasy Rep.	17,827	284,873	2,745,662	3,251,380	195,323	145,854
Morocco	195,346	7,997	672,794	266,004	111,038	8,112
Mozambique	2,857,901	3,114,843	3,150,761	3,362,471	2,297,757	1,963,108
Angola	—	6,152	661,230	743,898	1,042,469	1,287,337
Sudan	2,832,147	1,590,877	8,929,990	15,121,529	346,023	361,744
Tunisia	—	—	414,560	818,469	175	5,350

EXPORTS AND RE-EXPORTS OF MERCHANDISE

By countries (continued)

	IMPORTS		EXPORTS OF HONG KONG PRODUCTS		RE-EXPORTS	
	1963	1964	1963	1964	1963	1964
	AFRICA (Cont.)					
Guinea	313,454	—	161,235	40,726	78,385	81,495
Senegal	—	—	2,597,004	2,947,956	169,571	163,388
Mali	—	—	539,959	18,508	51,061	27,190
Mauritania	—	—	3,960	39,803	—	—
Ivory Coast	—	—	5,164,352	6,519,254	2,000	36,530
French Community: W. Africa, n.e.s.	—	—	4,345,190	6,608,933	—	962
Cameroun Rep.	—	—	3,525,497	3,453,586	9,304	202,227
Togo	—	—	871,115	1,462,656	—	—
Liberia	—	—	8,361,723	6,762,950	1,505,747	1,257,395
Somali Rep.	—	—	444,124	1,013,864	46,085	50,657
Africa, n.e.s.	775,028	2,576,750	7,256,111	1,297,896	594,709	378,912
OCEANIA						
United States Oceania	2,072,926	1,791,331	28,667,314	24,918,274	18,876,698	17,675,513
Oceania, n.e.s.	347,875	125,150	9,488,227	9,028,928	3,336,325	2,534,902
Postal Packages	9,026,749	12,419,399	4,168,757	3,095,870	—	—
Merchandise Total	7,411,938,708	8,550,556,627	3,831,031,637	4,427,620,079	1,160,195,000	1,355,951,820
Gold and Specie	329,249,272	156,079,364	—	—	259,847,073	156,829,500
GRAND TOTAL:	7,741,187,980	8,706,635,991	3,831,031,637	4,427,620,079	1,420,042,073	1,512,718,320

COMPARISON OF VALUES OF IMPORTS, EXPORTS AND RE-EXPORTS OF COMMODITIES

For the years 1963—1964

(In HK\$)

COMMODITY	IMPORTS		EXPORTS HONG KONG PRODUCTS		RE-EXPORTS	
	1963	1964	1963	1964	1963	1964
Live animals, chiefly for food	313,630,695	376,688,802	—	—	4,408,440	3,922,600
Meat and meat preparations	89,732,917	135,313,655	1,919,513	2,023,536	3,118,018	5,750,739
Dairy products, eggs and honey	168,842,201	185,277,867	248,523	216,414	8,861,527	11,428,251
Fish and fish preparations	127,087,028	180,627,518	44,737,916	34,055,905	25,365,535	33,361,306
Cereals and cereal preparations	444,827,997	431,240,932	20,230,033	20,798,018	34,575,599	52,320,972
Fruits and vegetables	304,444,372	340,664,539	24,065,207	24,486,974	72,572,815	56,300,267
Sugar and sugar preparations	159,443,585	185,876,461	35,855,327	48,940,889	74,067,819	79,138,807
Coffee, tea, cocoa, spices and manufactures thereof	58,205,705	101,559,553	1,346,980	1,164,860	25,325,027	66,026,010
Feeding stuffs for animals (not including unmilled cereals)	28,905,501	25,137,297	2,195,843	2,402,593	4,203,157	2,650,339
Miscellaneous food preparations	38,310,521	49,701,221	25,671,470	26,340,656	7,343,742	9,501,044
Beverages	48,573,014	59,768,110	2,341,805	2,437,295	1,861,010	5,201,905
Tobacco and tobacco manufactures	122,732,159	129,917,989	57,974,590	56,137,535	5,736,138	5,250,025
Hides, skins and fur skins, undressed	5,884,571	9,330,836	2,214,889	2,565,159	3,252,253	6,806,340
Oil-seeds, oil nuts and oil kernels	39,204,907	31,124,319	—	—	19,587,220	15,426,204
Crude rubber, including synthetic and reclaimed	32,042,352	34,997,277	22,940	—	2,006,365	27,214,474
Wood, lumber and cork	86,572,775	83,033,727	3,920,863	4,460,130	5,374,727	7,796,174
Pulp and waste paper	1,327,295	1,006,101	1,875,848	3,371,329	1,214,747	1,340,134
Textile fibres and waste	502,776,619	564,436,018	10,651,101	11,458,250	19,744,978	18,579,091
Crude fertilizers and crude minerals, excluding coal, petroleum and precious stones	12,306,597	14,118,698	1,786,734	1,291,068	2,106,199	2,614,343
Metalliferous ores and metal scrap	15,569,082	22,272,153	51,031,205	59,124,498	248,859	214,430

COMPARISON OF VALUES OF IMPORTS, EXPORTS AND RE-EXPORTS OF COMMODITIES

(continued)

(In HK\$)

COMMODITY	IMPORTS		EXPORTS HONG KONG PRODUCTS		RE-EXPORTS	
	1963	1964	1963	1964	1963	1964
Animal and vegetable crude materials, inedible, n.e.s.	124,399,654	146,269,642	13,520,781	20,156,936	73,593,969	80,147,330
Mineral fuels, lubricants and related materials	261,455,153	261,975,158	11,306	6,900	13,527,029	19,787,200
Animal and vegetable oils (not essential oils), fats, greases and derivatives	63,434,764	71,546,241	4,071,436	3,861,155	16,904,365	11,313,855
Chemical elements and compounds	96,653,836	104,302,725	3,734,571	2,866,465	15,080,688	14,546,941
Mineral tar and crude chemicals from coal, petroleum and natural gas	941,786	871,790	—	—	14,805	—
Dyeing, tanning and colouring materials	68,480,624	81,000,810	17,713,095	18,393,761	27,368,111	30,855,504
Medical and pharmaceutical products	108,514,610	105,615,855	16,615,756	17,292,671	93,502,046	70,762,889
Essential oils and perfume materials; toilet, polishing and cleansing preparations	55,602,407	66,473,247	5,990,107	6,348,847	11,724,119	13,201,879
Fertilizers, manufactured	28,399,622	2,328,982	—	—	27,646,773	63,101
Explosives and miscellaneous chemical materials and products	215,074,054	309,775,344	8,032,869	6,731,697	36,114,202	45,849,590
Leather, leather manufactures, n.e.s., and dressed furs	29,833,535	32,574,220	1,615,834	1,562,568	2,495,340	4,665,252
Rubber manufactures, n.e.s.	23,835,007	31,881,954	1,183,828	988,035	2,010,291	4,007,338
Wood and cork manufactures (excluding furniture)	37,798,722	39,007,790	13,933,577	11,707,401	1,776,420	2,509,687
Paper, paperboard and manufactures thereof	166,855,515	203,989,756	10,095,191	8,705,588	18,075,072	19,439,394
Textile yarn, fabrics, made-up articles and related products	1,141,381,563	1,403,060,637	648,329,921	706,738,472	141,355,780	203,886,283

COMPARISON OF VALUES OF IMPORTS, EXPORTS AND RE-EXPORTS OF COMMODITIES

(continued)

(In HK\$)

COMMODITY	IMPORTS		EXPORTS HONG KONG PRODUCTS		RE-EXPORTS	
	1963	1964	1963	1964	1963	1964
Non-metallic mineral manufactures, n.e.s.	168,097,784	208,719,006	13,546,409	11,989,719	8,434,733	11,630,734
Silver, platinum, gems and jewellery	343,084,626	221,713,258	76,057,676	80,463,292	155,123,744	166,252,988
Base metals	341,307,947	439,341,775	35,687,152	42,447,450	14,776,725	25,741,952
Manufactures of metals	83,148,346	118,695,557	140,909,531	145,902,491	6,138,222	20,668,554
Machinery other than electric	344,309,680	424,442,710	20,992,965	24,421,292	23,325,634	31,922,044
Electric machinery apparatus and appliances	344,602,170	409,349,791	152,654,234	186,305,551	19,498,468	23,439,825
Transport equipment	166,194,442	190,512,569	22,368,526	14,855,417	12,057,822	16,638,942
Prefabricated buildings; sanitary, plumbing, heating and lighting fixtures and fittings	25,437,488	26,652,384	75,458,846	94,772,491	995,504	1,295,194
Furniture and fixtures	11,109,759	16,098,411	41,401,351	39,806,423	1,429,336	1,083,964
Travel goods, handbags, and similar articles	5,971,210	10,561,993	29,136,086	38,715,522	205,607	490,842
Clothing	116,538,218	179,858,404	1,382,875,445	1,619,692,385	12,103,472	21,981,260
Footwear	23,020,032	40,712,936	146,334,064	174,593,580	652,870	1,182,905
Professional, scientific and controlling instruments; photographic and optical goods; watches and clocks	209,546,346	221,201,688	29,511,742	24,224,278	52,172,823	49,560,637
Miscellaneous manufactured articles, n.e.s.	187,372,635	197,529,966	612,387,314	806,530,140	38,719,670	45,443,628
Postal Packages	9,026,749	12,419,399	4,168,757	3,905,870	—	—
Live animals, not for food	1,339,107	1,449,530	62,500	—	1,262,692	966,340
Commodities, n.e.s.	8,841,424	8,530,026	14,539,980	12,358,573	6,064,099	5,772,313
Merchandise Total	7,411,938,708	8,550,556,627	3,831,031,637	4,427,620,079	1,160,195,000	1,355,951,820
Gold and Specie	329,249,272	156,079,364	—	—	259,847,073	156,829,500
GRAND TOTAL	7,741,187,980	8,706,635,991	3,831,031,637	4,427,620,079	1,420,042,073	1,512,781,320

HONG KONG HOLIDAY LIST FOR 1965

GENERAL HOLIDAYS:

Every Sunday	Friday, 1st January.
The first week-day in January	Tuesday, 2nd February.
Chinese New Year's Day	Wednesday, 3rd February.
The day following Chinese New Year's Day	Friday, 16th April.
Good Friday	Saturday, 17th April.
The day following Good Friday	Monday, 19th April.
Easter Monday	Tuesday, 27th April.
The Birthday of Her Majesty the Queen	Monday, 7th June.
Whit Monday	Thursday, 1st July.
The first week-day in July	Monday, 2nd August.
The first Monday in August	Monday, 30th August.
The 30th day of August	Friday, 10th September.
Chinese Mid-Autumn Festival Day	Monday, 18th October.
The third Monday in October	Monday, 15th November.
The day following Remembrance Sunday	Saturday, 25th December.
Christmas Day	Monday, 27th December.
The 27th day of December	

SCHOOL HOLIDAY:

Commonwealth Day	Monday, 24th May.
------------------	-------------------

HONG KONG GENERAL CHAMBER
OF COMMERCE
(ESTABLISHED 1861)

LIST OF MEMBERS

as at 1st February, 1965

With the date of Election to Membership

FIRMS

A.B.C. Company 1963	Exporters, 1004 Shui Hing House, Kowloon.	Allied Traders Ltd. 1961	Import/Export, 801 Shui Hing House, Kowloon.	Asia Agencies 1947	Import/Export, Rutton Building, 1st floor Hong Kong.	Banque Belge pour l'Etranger (Extreme-Orient) S.A. 1946	Edinburgh House, Hong Kong.
Abdoolilly Ebrahim & Co., (H.K.) Ltd. .. 1940	Import/Export, Manufacturers, 21 Wyndham St., 2nd floor, Hong Kong.	Amalgamated World Exports (H.K.) Ltd. 1962	Import/Export, Manufacturers Representatives, 7-9 Hollywood Road, 2nd floor, Hong Kong.	Asia & Africa Trading Co., Ltd. 1959	Import/Export, Manufacturers' Representatives, Rm. No. 3, 3rd floor, Block A, Chungking Mansion, Kowloon.	Banque de l'Indochine 1895	5 Queen's Road, C., Hong Kong.
Adal Trading Co. 1963	Import/Export, Room 14B Printing House, Hong Kong.	Amerex International (Hong Kong) Ltd. .. 1961	Import/Export, 708-9 Takshing House, Hong Kong.	Asia Camphor Mfg. Co., Ltd. 1951	Manufacturers, 215 Man Yee Building, Hong Kong.	Banque Nationale pour le Commerce et l'Industrie 1963	Bankers, Central Building, Hong Kong.
Adlanca Enterprises Ltd. 1961	Import/Export, Room 502, 72 Nathan Rd., Kowloon.	American Express Co., Inc. 1929	Bankers, Travel and Forwarding Agents, Union House, Hong Kong.	Asia General Agencies 1961	General Import/Export, Manufacturers' Representatives, Commission Agents, 312 Mercantile Bank Bldg., Hong Kong.	Barma, H. T. Ltd. 1946	Import/Export, Commission Agents, 45-6 Printing House, Hong Kong.
Advertising & Publicity Bureau Ltd. 1960	Publicity & Advertising Agents, 701-706 Marina House, Hong Kong.	American International Underwriters, Ltd. 1949	General Insurance, 12-14 Queen's Road, C., Hong Kong.	Asia Magazines Ltd. 1961	Publishers, Lok Hoi Tong Bldg., 10th, 11th and 12th floors, Hong Kong.	Barretto Shipping (Hong Kong) Ltd. .. 1957	Shipping, 1202/4 Wing On Life Bldg., Hong Kong.
Aero Technical Corporation Ltd. 1961	Import/Export, Aviation and Industrial Engineers, Manufacturers' Representatives, 636-9 Alexandra House, Hong Kong.	American Express Co., Inc. 1929	Bankers, Travel and Forwarding Agents, Union House, Hong Kong.	Assaninnal, G. & Co. (H.K.) Ltd. 1950	Import/Export, 3 Hollywood Road, Ground floor, Hong Kong.	Bayer China Co., Ltd. 1959	Importers, 1916 Union House, Hongkong.
Africa-Far East Trade Co. 1961	Import/Export, 24 Printing House, Hong Kong.	American International Underwriters, Ltd. 1949	General Insurance, 12-14 Queen's Road, C., Hong Kong.	Associates, L.K. Company 1965	Exporters, Manufacturers, 304 Bank of East Asia Bldg., Hong Kong.	Beauty Jewellery & Metal Mfy. 1964	Exporters, Manufacturers, 266-268 Des Voeux Road, C., 3rd floor, Hong Kong.
Agencia Commercial "Progresso" Ltd. .. 1947	Import/Export, 443-4 Alexandra House, Hong Kong.	American President Lines, Ltd. 1918	Steamship Owners and Operators, St. George's Bldg., Hong Kong.	Associated Agencies 1963	General Import/Export, Manufacturers, 31-F Wyndham Street, 4th floor, Hong Kong.	Ben Line Steamers, Ltd. 1957	Shipping, Chartered Bank Bldg., 2nd floor, Hong Kong.
Air-India 1957	Airline, Hong Kong Hilton Hotel Arcade, Hong Kong.	Amerisia & Co. 1960	Import/Export, 12 Queen's Street, Ground floor, Hong Kong.	Assudamall & Sons 1959	Import/Export, 31-F Wyndham Street, Ground floor, Hong Kong.	Ben Union Corporation Ltd. 1964	Import/Export, Manufacturers, Representatives, 701 Central Building, Hong Kong.
Alcan Asia Ltd. 1961	Traders in aluminium and related products, 1102 Chartered Bank Bldg., Hong Kong.	Amoy Canning Corporation (Hong Kong) Ltd. 1952	General Import/Export, Manufacturers, 1404/5 Hang Seng Bank Bldg., Hong Kong.	Astra Hong Kong Trading Corp. 1959	General Import/Export, Buying Agents, 1924 Union House, Hong Kong.	Bennett, A. & Co. 1948	General Import/Export, 4 Queen's Road, C., Hong Kong.
Alexandra, James & Co., Ltd. 1948	General Import/Export, Commission Agents, 512-3, No. 9 Ice House Street, Hong Kong.	Anco Rubber Industrial Co., Ltd. 1963	Manufacturers, 64 Tsun Yip Street, Kun Tong, Kowloon.	Atlas Electronics Corporation Ltd. 1962	Exporters, Manufacturers, 409 Gloucester Building, Hong Kong.	Beraha, M. & Co. Ltd. 1939	General Import/Export, Commission Agents, 303 Man Yee Bldg., Hong Kong.
Alliance Manufacturing Co. 1963	Import/Export, 18 Fenwick Street, 10th floor, Suite B, Hong Kong.	Anderson & Ashe Ltd. 1926	Marine Surveyors and Consulting Engineers, 1924-5 Union House, Hong Kong.	Atlas Impex & Agency Co. 1962	Import/Export, 37 Pottinger Street, 2nd floor, Hong Kong.	Better Manufacturing Co., The 1965	Import/Export, Manufacturers, 705 Regent House, Hong Kong.
Alliance Trading Co. 1963	Import/Export, Manufacturers, 709 Bank of East Asia Bldg., Hong Kong.	Anglo Asiatic Traders Ltd. 1961	Import/Export, Commission Agents, 1417-1419 Central Building, Hong Kong.	Atlas Chow & Co. 1960	Import/Export, Manufacturers' Representatives, P. & O. Building, 9th floor, Hong Kong.	Bhojsons & Co. (H.K.) Ltd. 1954	Import/Export, 203 Central House, 1st floor, Hong Kong.
Allied International Co. 1964	General Import/Export, 507 China Emporium Bldg., Hong Kong.	Anson Company 1955	Import/Export, Manufacturers' Representatives, Pedder Building, 2nd floor, Hong Kong.	Anstralian Leathers (Hong Kong) Ltd. .. 1957	Import/Export, 1926 Union House, Hong Kong.	Blair & Co., Ltd. 1946	Import/Export, Union House, 11th floor, Hong Kong.
		Arnhold & Co., Ltd. 1936	Engineers and Contractors, 301 Holland House, Hong Kong.	Babcock & Wilcox Ltd. 1950	Engineers and Contractors, 1001 Alexandra House, Hong Kong.	Hine Taxicabs Ltd. The 1948	Taxicab Service, Junction of Waterloo Rd. and Homantin Street, Kowloon.
		Arnhold Trading Co., Ltd. 1936	Import/Export, Gloucester Bldg, 5th floor, Hong Kong.	Backhouse, James H. Ltd. 1926	Import/Export, Insurance Agents, 303-6 Marina House, Hong Kong.	Bock Hing Trading Corp. Ltd. 1953	Import/Export, 319 Hongkong Bank Bldg., Hong Kong.
				Bakhsh Company 1964	Import/Export, 802 Ka Wah Bank Bldg., Hong Kong.	Bonnis Hair Products Manufactory 1965	Import/Export, Manufacturers, Room 304, 6 Queen's Road Central, Hong Kong.
				Bank of East Asia Ltd. 1920	Bankers, 10 Des Voeux Road, Hong Kong.	Borneo Snamatra Trading Co. (H.K.) Ltd. 1953	Import/Export, 502 Man Yee Bldg., Hong Kong.
				Bank Line (China) Ltd. The 1910	Shipping Agents, Brokers and General Merchants, 1125 Alexandra House, Hong Kong.	Hotelho A. G. & Co. 1940	General Import/Export, 629-630 Union House, Hong Kong.
				Bank of Tokyo Ltd. The 1960	Caxton House, Grd. Floor, Duddell St., Hong Kong.	Bradford Agencies Ltd. 1964	Exporters, Manufacturers' Representatives, 901 Cheong Hing Bldg., Kowloon.
				Banno Hongkong Ltd. 1963	Import/Export, Manufacturers' Agents, Bonham Building, 10th floor, Hong Kong.	Breckwoldt & Co. (H.K.) Ltd. 1960	Import/Export, Commission Agents, Milton Mansion, 2nd floor, 96 Nathan Road, Kowloon.
						Bright & Co. 1961	Import/Export, 1435 Central Building, Hong Kong
						Brighten Trading Co. 1947	Import/Export, Manufacturers, Wang Hing Bldg., Hong Kong.
						Brightening Imitation Jewellery Fty. .. 1959	Manufacturers, 82 Wing Lok Street E., 1st floor, Hong Kong.

Brilliance Trading Co., The 1955	Import/Export, 40 Fuk Wing Street, Grd. floor, Kowloon.	Cathay Limited 1947	Advertising Agency, 430-2, Alexandra House, Hong Kong.	Chen, Eric & Co. 1962	Exporters, Manufacturers' Agents, 404 Wellington House, Hong Kong.	China Engineers, Ltd. The 1940	Import/Export, Manufacturers, 325 Alexandra House, Hong Kong.
British-American Tobacco Co. (H.K.) Ltd. 1903	Distributors, 256 Gloucester Road, Hong Kong.	Cathay Pacific Airways, Ltd. 1947	Airline, 9 Connaught Road, C., Hong Kong.	Cheong-Leen, H. & Co. 1946	Import/Export, 310 Yu To Sang Bldg., Hong Kong.	China Handicraft Co. 1954	Manufacturers, Long Wah Bldg., Grd. & 1st floor, 17-A Lock Road, Kowloon.
British General Electric Co., Ltd. The .. 1915	Electrical Engineers, Manufacturers, Union House, Hong Kong.	Cathay Traders (H.K.) Ltd. 1952	Import/Export, 28 Gilman Bazaar, Hong Kong.	Cheong Mao Hong 1955	General Import/Export, 1202-4 Wong House, 26-30 Des Voeux Road West, Hong Kong.	China Light & Power Co., Ltd. .. 1915	Public Utility, 147 Argyle Street, Kowloon.
British International Underwriters .. . 1961	Insurance and Commission Agents, 514-6 Windsor House, Hong Kong.	Caudron, K. & Co. 1946	General Import, Indenting Agents, Manufacturers' Representatives, Caxton House, Hong Kong.	Cheong Tai Co. 1946	Importers, 728 Li Po Chun Chambers, Hong Kong.	China Merchandising Corp. Ltd. .. . 1964	Import/Export, 112 Alexandra House, Hong Kong.
British Overseas Airways Corporation .. . 1947	International Airline, 126 Alexandra House, Hong Kong.	Central Textiles (H.K.) Ltd. 1958	Manufacturers, 937 Union House, Hong Kong.	Cheong Tai Co. 1946	Importers, 728 Li Po Chun Chambers, Hong Kong.	China Motor Agencies & Sales Co. .. . 1948	General Import/Export, 25 Henry House, Hong Kong.
Bunge & Co., Ltd. 1947	General Merchants and Agents, 1825 Union House, Hong Kong.	Central Textiles (H.K.) Ltd. 1958	Manufacturers, 937 Union House, Hong Kong.	Cheoy Lee Shipyard 1960	Shipbuilding, Shiprepairing, Ngau Chi Wan, Kowloon.	China New Guinea Mercantile Co., Ltd. .. 1948	Import/Export, Commission Agents, 507-8 Marina House, Hong Kong.
Bunnan Tong & Co., Ltd. 1928	Import/Export, Marina House, 1st floor, Hong Kong.	Central Trading Co., Ltd. 1934	Import/Export, Manufacturers' Representatives, 318 Marina House, Hong Kong.	Cherington Textiles (P.E.) Ltd. 1964	Exporters, 1206 Union House, Hong Kong.	China Provident Co., Ltd. 1915	Warehouses, 171-8 Connaught Road, West, Hong Kong.
Bun's Investment Corporation 1965	Import/Export, Manufacturers' Representatives, 801 Mabel House, 591 Nathan Road, Kowloon.	Chainrai Sons 1955	General Import/Export, 11 Cameron Road, Kowloon.	Chesterfield Manufacturing Co., Ltd. .. . 1963	Import/Export, Manufacturers' Representatives, 1503 Hang Chong Bldg., Hong Kong.	China Resources Co. 1952	General Import/Export, Bank of China Building, Hong Kong.
Burkill, A. R. & Sons (Hong Kong) Ltd. 1948	Import/Export, Insurance, 109 Edinburgh House, Hong Kong.	Champagne Engineering Corp. Ltd. .. . 1959	Manufacturers and Dealers, 15-17 Hing Yip St., 2nd floor, Kun Tong, Kowloon.	Cheung Fat & Co. 1947	Import/Export, 126 Wing Lok Street, Hong Kong.	China Trading Corporation, The 1948	Import/Export, Manufacturers' Representatives, 220-1 Alexandra House, Hong Kong.
Burwill Metals (1961) Ltd. 1951	Import/Export, Commission Agents, 52 Printing House, Hong Kong.	Champion Plastics Manufacturing Co., Ltd. 1960	Exporters, Manufacturers, 928 Cheung Sha Wan Road, Kowloon.	Cheung Hing Hong 1961	Import/Export, 532 Man Yee Bldg., Hong Kong.	China Underwriters Life & General Insurance Co., Ltd. 1927	Insurance, Gloucester Building, 3rd floor, Hong Kong.
Butterfield & Swire (Hong Kong) Ltd. .. 1903	Shipping, Industrial and Insurance Managers and Agents, Union House, Hong Kong.	Chan Tem Fat, Ltd. 1962	Import/Export, Manufacturers' Representatives, Commission Agents, 5 Queen's St., 1st floor, Hong Kong.	Cheung Kee Co. 1962	Import/Export, 25 Bonham Strand, W., 1st floor, Hong Kong.	Ching Cheung Co., Ltd. 1947	Import/Export, Manufacturers' Representatives, Marina House, 1st floor, Hong Kong.
C. A. C. Limited 1960	Import/Export, 806-7 Shell House, Hong Kong.	Chandler, William & Co., Ltd. 1950	Exporters, Manufacturers, 1335 Central Building, Hong Kong.	Cheung, T. & Co., Ltd. 1955	General Import/Export, Manufacturers' Representatives, 9 Ice House Street, Hong Kong.	Chingman & Sons, Ltd. 1948	Import/Export, Manufacturers, 402 Chartered Bank Bldg., Hong Kong.
C.W.S. Limited 1964	Manufacturers, Bankers, Room 1203 Chartered Bank Building, Hong Kong.	Chang H. C. & Co. 1950	General Import/Export, 708 Marina House, Hong Kong.	Cheung Tai Hong Ltd. 1950	Import/Export, 187 Wing Lok St., West, 1st floor, Hong Kong.	Choi's Manufacturing Co. 1964	General Import/Export, Manufacturers, 831-2 Man Yee Bldg., Hong Kong.
Cable & Wireless Ltd. 1947	International Telecommunications, Mercury House, Hong Kong.	Chanrai J. T. (H.K.) Ltd. 1950	Import/Export, Indenting Agents, 73 Wyndham St., Grd. floor, Hong Kong.	Cheung Tai Mercantile Agencies 1964	Import/Export, 402-B Wilson House, Hong Kong.	Chortimall, K. A. J. & Co. (H.K.) Ltd. 1936	General Import/Export, 35 Wyndham St., Hong Kong.
Caldbeck Macgregor & Co., Ltd. 1895	Wine and Spirit Merchants, 116 Union House, Hong Kong.	Charlotte Horstmann Ltd. 1964	Exporters, Manufacturers, 16 Peninsula Court, Kowloon.	Chiap Hua Flashlights Ltd. 1958	Manufacturers, 23 Bailey Street, Hunghom, Kowloon.	Chow, T. C. & Co., Ltd. 1965	Import/Export, 328 Man Yee Building, Hong Kong.
Caltex (Asia) Ltd. 1947	Petroleum Products, Edinburgh House, 7th floor, Hong Kong.	Chartered Bank, The 1861	4-4A Des Voeux Road, C., Hong Kong.	Chik Fung Co. 1946	Import/Export, 707 Union House, Hong Kong.	Choy Brothers & Co., Ltd. 1955	General Import/Export, 80-82 Queen's Road, C., 4th floor, Hong Kong.
Canadian Pacific Steamship Ltd. 1917	Steamship Operators, 125 Union House, Hong Kong.	Chase Manhattan Bank, The 1964	15 Queen's Road, Central, Hong Kong.	Chin Nam & Co. 1964	Import/Export, 17 On Lan Street, 1st floor, Hong Kong.	Chuy Lee Lung Metal Factory Ltd. .. . 1955	Exporters, Manufacturers, 280 Electric Road, Grd. floor, Hong Kong.
Canton Bros. Rubber Co. (1935) Ltd. .. . 1938	Jardine House, 12th floor, Hong Kong.	Chau, Kenneth & Co. 1963	Public Accountants, 302 China Emporium Bldg., Hong Kong.	China Cold Storage & Eng. Co., Ltd. .. . 1960	Cold Storage and Manufacturers of Air Conditioners, 105-106 Takshing House, Hong Kong.	Chu Yuen & Co. 1960	Exporters, 407 Yu To Sang Bldg., Hong Kong.
Carmichael & Clarke 1915	Consulting Engineers, Naval Architects, Marine and Cargo Surveyors, 828-31 Union House, Hong Kong.	Che Foong & Co. 1963	Import/Export, Jam Fair Bldg., 13th Flr. 39-41 Des Voeux Road C., Hong Kong.	China Dyeing Works, Ltd. 1952	Dyers, Bleachers and Finishers, 819 Union House, Hong Kong.	Chuen Sun Knitting Factory, Ltd. 1952	Manufacturers, 249 Des Voeux Road, C., Hong Kong.
Carter Wallace (Hong Kong) Ltd. 1963	Exporters, Manufacturers, Distributors, 141 Union House, Hong Kong.	Che San & Co. 1955	Import/Export, Distributors, Agents, 56/8 Des Voeux Road, C., Hong Kong.	China Egg Produce Co. (H.K.) Ltd. .. . 1952	Cold Storage, 25 Chun Tin Street, Hunghom, Kowloon.	Chun On Fire Insurance Co., Ltd. 1903	Fire Insurance, 8 Queen's Road, W., Hong Kong.
Carreras Limited 1964	Importers, Distributors, c/o Dodwell & Co., Ltd., 135 Union House, Hong Kong.	Chellaram, D. 1936	General Import/Export, 41 Pottinger St., Grd. floor, Hong Kong.	China Embroidery Co. 1956	General Import/Export, Manufacturers, Wing Ting Bldg., Hong Kong.	Chun Sing Trading Co. 1963	Import/Exports, Manufacturers, 802-3 Takshing House, Hong Kong.
Casey Company, Ltd. 1955	General Import/Export, 801 Takshing House, Hong Kong.			China Emporium Ltd. 1949	Department Store, 62A-68 Queen's Road, C., Hong Kong.	Chung Kong Co. 1951	Exporters, Manufacturers, 228-230 Fook Wing Street, Shamshui, Kowloon.

Chung Mei Manufactory Ltd. 1960	Manufacturers, 58 Pau Chung St., To Kwa Wan, Kowloon.	Cosmos Development Co. 1963	Import/Export, Shipbuilding Agents, 402 Luk Hoi Tong Bldg., Hong Kong.	Deacons 1939	Solicitors and Notaries, Union House, 6th floor, Hong Kong.	Douglas Steamship Co., Ltd. 1861	General Merchants, Shipowners, Ship Charterers, 1504-7 Hang Seng Bank Bldg., Hong Kong.
Chung Nam Weaving Factory Ltd. 1948	Weavers, 705 Union House, Hong Kong.	Cosmos Development Co. 1963	Exporters, Manufacturers, 701 Shaw's Building, Kowloon.	Debs Brothers & Co. (Hongkong) Ltd. . . 1948	Import/Export, 120 Wang Hing Bldg., Hong Kong.	Doulatram, G. & Sons (H.K.) Ltd. 1961	Import/Export, 43 Pottinger Street, Hong Kong.
Chung Shing Shun, Ltd. 1949	Exporters, Manufacturers, 156 Queen's Road, W., Hong Kong.	Cosmo Limited 1964	Import/Export, Manufacturers, 1526 Central Building, Hong Kong.	Decorator Supply Co., Ltd. 1963	Import/Export, 522 Central Building, Hong Kong.	Dransfield, A. & Co. 1948	Import/Export, Manufacturers' Representatives, 725/730 Alexandra House, Hong Kong.
Ciba (China) Ltd. 1946	Importers, 1703 Hang Seng Bank Bldg., Hong Kong.	Cowan & Co. 1953	Import/Export, 39 Beech Street, Kowloon.	Decosta Continental Shippers 1960	Import/Export, Overseas Representatives, 26 Hollywood Road, 5th floor, Hong Kong.	Dreyer & Co., Ltd. 1949	General Merchants, Manufacturers' Representatives, 201-4 Alexandra House, Hong Kong.
Coastal Traders 1962	Import/Export, 1211 Liu Chong Hing Bank Bldg., Hong Kong.	Cowie, John & Co., Ltd. 1950	Import/Export, 1101-3 Union House, Hong Kong.	Dee Aye Corporation 1964	Import/Export, Manufacturers' Representatives, 303 Mohan House, 3rd floor, Hong Kong.	Dumarest, Ets. pour le Commerce & Industrie 1961	Import/Export, 1701 Hang Seng Bank Bldg., Hong Kong.
Colgate-Palmolive (H.K.) Ltd. 1960	Import/Export, 1201 Hang Seng Bank Bldg., Hong Kong.	Craig's Limited 1955	Import/Export, Commission Agents, 123/4 Alexandra House, Hong Kong.	Deed & Company, Ltd. 1963	Import/Export, Manufacturers' Representatives, 402 China Emporium Bldg., Hong Kong.	Dunbar, L. & Co. (1950) Ltd. 1915	General Import/Export, Union House, 11th floor, Hong Kong.
Colviko Far Eastern Co. 1962	Import/Export, 1104 Takshing House, Hong Kong.	Crown Handiwork Co. 1964	Exporters, Manufacturers, 113 Wang Hing Bldg., Hong Kong.	Dennis & Co., Ltd. 1936	Import/Export, 507 Holland House, Hong Kong.	Dunlop Rubber Co. (China) Ltd. The . . . 1932	Import/Export, 207/210 Marina House, Hong Kong.
Coming & Company 1964	Import/Export, Manufacturers, 703 Pioneer Building, Mongkok, Kowloon.	Cyanamid (Far East) Ltd. 1963	Importers, 901-2 Hang Seng Bank Bldg., Hong Kong.	Dependable Garment Mfg. Co. 1963	Manufacturers, C4 Mirador Mansion, 10th floor, Nathan Road, Kowloon.	Duna, K. & Co. 1962	Import/Export, Manufacturers' Representatives, 204 Wellington House, Hong Kong.
Comluck Corporation 1960	Exporters, Manufacturers, 602 Man Yee Bldg., Hong Kong.	Dah Chong Hong, Ltd. 1957	General Import/Export, Hang Seng Bank Bldg., 4th floor, Hong Kong.	Desco (Hong Kong) Ltd. 1946	Import/Export, 9 Ice House St., Hong Kong.	Duro Paint Mfg. Co., Ltd. 1949	Manufacturers, Union House, 3rd floor, Hong Kong.
Commerce & Industry Suppliers Ltd. . . . 1954	Import/Export, 909 Shell House, Hong Kong.	Dah Chung Industrial Co., Ltd. 1948	Manufacturers, S. I. L. 503/4 RP Shaukwan Road, Hong Kong.	Deson's 1960	Import/Export, 26 Hollywood Road, 4th floor, Hong Kong.	Dynastex (H.K.) Corporation 1965	Import/Export, Manufacturers, 1107 Shui Hing House, Nathan Road, Kowloon.
Commercial Survey Co. 1963	Architects, Engineers, Surveyors, 515-6 Li Po Chun Chambers, Hong Kong.	Dah Way Co. 1958	Exporters, 1108/9 Takshing House, Hong Kong.	Deutsch-Asiatische Bank 1959	Hang Chong Building, Hong Kong.	Eagle and Globe Steel Co., Ltd. The . . . 1941	Manufacturers, Distributors, 302 Gloucester Building, Hong Kong.
Compagnie Maritime des Chargeurs Reunis 1963	Shipowners, 1717 Central Building, Hong Kong.	Dairy Farm, Ice & Cold Storage Co., Ltd. The 1916	Cold Storage, Distributors, Manufacturers, Windsor House, Mezz. floor, Hong Kong.	Deutsche Asia Trading Co. 1962	Import/Export, Manufacturers' Representatives, 303 Princess Theatre Bldg., Kowloon.	East Asia Co. 1951	Import/Export, Commission Agents, Manufacturers' Representatives, Great China House, 3rd Floor, Hong Kong.
Condor & Co. 1959	Import/Export, No. 2, Duke Street, Block D, 5th floor, Kowloon.	Dalmaal & Sons (H.K.) Ltd. 1949	Import/Export, Manufacturers' Representatives, 45 Pottinger Street, Hong Kong.	Dhabher & Son 1940	Import/Export, Manufacturers' Representatives, 644 Alexandra House, Hong Kong.	East Asia Exporters 1958	Import/Export, Milton Mansion, 3rd floor, Kowloon.
Connell, H. & Co., Ltd. 1946	Import/Export, 306 Central House, Hong Kong.	Danby & Hance Ltd. 1946	Import/Export, Manufacturers' Agents, 405 Edinburgh House, Hong Kong.	Dialdas, M. & Sons 1946	Import/Export, 402 Hing Fat House, Hong Kong.	East Asiatic Co., Ltd. The 1935	Import/Export, Shipping, 1030/36 Union House, Hong Kong.
Connell Brothers Co. (H.K.) Ltd. 1910	General Import/Export, 607 Holland House, Hong Kong.	Danemann Watch Case Factory Ltd. . . . 1960	Manufacturers, 1069 Tung Chau St., Grd. floor, Kowloon.	Diamond Company 1957	Import/Export, Manufacturers, 308 Chartered Bank Bldg., Hong Kong.	East Coast Enterprise Corporation 1961	Import/Export, Commission Agents, 613 China Building, Hong Kong.
Continental Rubber Manufactory Ltd. . . . 1940	Manufacturers, 61 Winslow St., Hungghom, Kowloon.	David & Co. (London) Ltd. 1964	Buying Agents, 402 Bank of East Asia Bldg., Mongkok, Kowloon.	Diaward Trading Co. 1948	Import/Export, 6 Queen's Road, C., Hong Kong.	East Sun Textile Co., Ltd. 1958	Exporters, Manufacturers, 901 Chartered Bank Bldg., Hong Kong.
Cook, Thomas & Son (Continental & Overseas) Ltd. 1911	Travel Agents, Union House, ground floor, Hong Kong.	David Trading Co. 1962	Import/Export, 604, Wing Ting Building, Hong Kong.	Diespecker Amalgamated Ltd. 1952	Import/Export, 1205 Takshing House, Hong Kong.	Eastern Cotton Mills Ltd. 1958	Cotton Spinners, 804/5 Fu House, 7 Ice House St., Hong Kong.
Cordial Co., Ltd. The 1953	Import/Export, 54A Nathan Road, Kowloon.	Davie, Boag & Co., Ltd. 1923	General Import/Export, Jardine House, 12th floor, Hong Kong.	Dietz, R. E. Co., Ltd. 1957	Exporters, Manufacturers, 41 Wong Chuk Hang Road, Hong Kong.	Eastern Gate Ltd. 1960	General Import/Export, 603, Hing Wai Building, Hong Kong.
Corn Products Co. (Hongkong) Ltd. . . . 1963	Manufacturers, 702 Takshing House, Hong Kong.	Dayaram & Sons (Export Department) . . 1947	Import/Export, 55 Wyndham Street, Hong Kong.	Din-Wai Electrical Manufacturing Co. . . 1961	Manufacturers, 47-49 Hoi Yuen Road, Kun Tong, Kowloon.	Eastern Gloria Enterprise 1962	Exporters, Manufacturers, 604 C.M.A. Building, Hong Kong.
Coronet Industries Ltd. 1964	Manufacturers, 650 Castle Peak Road, 6th floor, Kowloon.	Deacon & Co, Ltd. 1949	General Import/Export, Shipping and Insurance Agents, Hongkong Bank Bldg., 2nd floor, Hong Kong.	Dodwell & Co., Ltd. 1903	General Import/Export, 323 Hongkong Bank Bldg., Hong Kong.	Eastern Trading Co., Ltd. 1937	Import/Export, 244/5 Alexandra House, Hong Kong.

Eastern Zone Industrial Co., Ltd. 1953	Import/Export, Manufacturers' Representatives, 33 King's Road, Hong Kong.	Excellent Embroidery Factory 1958	Manufacturers, 97 Fu Lo Tsun Road, 1st floor, Kowloon.	Fing Lee Co. 1947	Import/Export, Commission Agents and Manufacturers' Representatives, 106 Pedder Building, Hong Kong.	Fung Hang Electrical Works 1956	Import/Export, Manufacturers, 604 C.M.A. Bldg., Hong Kong.
Edgar & Co., Ltd. 1957	Import/Export, 1102-3 Takshing House, Hong Kong.	Fabian & Co. 1953	Exporters, Manufacturers, Bank of East Asia Bldg., 1st floor, Mongkok, Kowloon.	First National City Bank 1903	2, Queen's Road C., Hong Kong.	Fung Keong Rubber Manufactory Ltd. .. 1938	Manufacturers, 409 Shaukiwan Road, Hong Kong.
Edmond, Graciela & Co. Ltd. 1963	Import/Export, Manufacturers, Chungking Mansions, Block A, 3rd floor, 36 Nathan Road, Kowloon.	Fairmont Co., Ltd. 1955	Import/Export, 601 Takshing House, Hong Kong.	Flamingo Garment Manufacturing Co., Ltd. 1963	Manufacturers, 479 Castle Peak Road, 6th floor, Kowloon.	Gabbott, F. R. & Co., Ltd. 1947	Import/Export, 420 Edinburgh House, Hong Kong.
Eisenberg & Co., Ltd. 1960	Import/Export, 831 Central Building, Hong Kong.	Falconer, George & Co. (H.K.) Ltd., .. 1949	Jewellers, Alexandra House, Grd. floor, Hong Kong.	Floline Trading Co. Ltd. 1962	Import/Export, 106 Hing Fat House, Hong Kong.	Galaxy Manufacturing Corp. (H.K.) Ltd. 1961	Import/Export, Manufacturers' Representatives, 504 Hang Chong Bldg., 5 Queen's Road Central, Hong Kong.
Ekman & Co., Ltd. 1949	Import/Export, Manufacturers' Representatives, Union House, 10th floor, Hong Kong.	Family Sarikat & Co. 1956	General Import/Export, 333 Wang Hing Bldg., Hong Kong.	Foh Cheong Co. 1962	Import/Export, Manufacturers, 48 Wyndham Street, 2nd floor, Hong Kong.	Gande, Price & Co., Ltd. 1947	Wine Merchants, 7 Chater Road, Hong Kong.
Electra Instruments Ltd. 1963	Import/Export, Manufacturers, 307 Great China House, Hong Kong.	Far East Associated Traders, Ltd. 1956	General Import/Export, Insurance Agents, 614 Holland House, Hong Kong.	Fong Brothers Co. 1956	Manufacturers, 128 Ngar Tsin Wai Road, 1st floor, Kowloon.	Gande, Price, Ltd. 1963	Import/Export, 324 Gloucester Building, Hong Kong.
Elias & Co., Ltd. 1958	Exporters, Buying Agents, 208 Holland House, Hong Kong.	Far East Commercial Co., Ltd. The 1952	Exporters, Commission Agents, 13 Hollywood Road, 2nd floor, Hong Kong.	Fonson & Co. Ltd. 1947	Import/Export, Manufacturers' Representatives, 622 Gloucester Bldg., Hong Kong.	Garden Co., Ltd. The 1955	Manufacturers, NKIL 3745 Castle Peak Road, Kowloon.
Eli's Embroidery Factory 1962	Import/Export, Manufacturers' Representatives, 14 On Lan Street, Hong Kong.	Far East Commodities (1950) Ltd. 1949	General Import/Export, 33 St. George's Bldg., Hong Kong.	Foo Hang Jewellery 1947	Import/Export, Manufacturers, 1005.6 Hing Wai Building, Hong Kong.	Garden Plastic Works 1960	Manufacturers, 69 Jervois Street, 3rd floor, Hong Kong.
Emanson Company 1962	Import/Export, Manufacturers, Alpha House, 7th floor, Nathan Road, Kowloon.	Far East Enamel Factory (H.K.) Ltd. .. 1957	Manufacturers, 64 Sham Chun St., Mongkok, Kowloon.	Foo Kee 1960	Exporters, 901-3 Commercial House, Hong Kong.	Gary Company Ltd. 1964	Import/Export, Manufacturers' Representatives, 520 Man Yee Bldg., Hong Kong.
Empire Trading & Agency Co. 1960	Import/Export, Commission Agents, 12 St. George's Building, Hong Kong.	Far East Oxygen & Acetylene Co. 1962	Manufacturers of Industrial Gases, 313 Chartered Bank Bldg., Hong Kong.	Foo Kwong (Cutlery) Metal Works Ltd. .. 1962	Import/Export, 1504-7 Ka Wah Bank Bldg Hong Kong.	Gee Chang Co., Ltd. 1948	General Import/Export, 33 Bouhan Strand, East, Hong Kong.
Emsons (HK) Corporation 1963	Import/Export, 75-77 Wyndham Street, Hong Kong.	Far East Wood Products 1965	Import/Export, Manufacturers, 440 Matauwei Road, Kowloon.	Fook Sing Electric Bulbs Factory, Ltd. .. 1960	Exporters, Manufacturers, 249-253 Un Chau St., 3rd floor, Kowloon.	Geekay Export & Import Co. 1950	Exporters, Buying Agents, 1-A Hollywood Road, Grd. floor, Hong Kong.
Eng Heng Co., Ltd. 1963	Import/Export, Buying Agents, Manufacturers' Representatives, 406-7 United Building, Hong Kong.	Far Eastern Operating Corporation Ltd. .. 1962	Import/Export, 301-302 Hongkong Bank Bldg., Mongkok, Kowloon.	Fountain Trading Co., Ltd. 1963	Import/Export, Manufacturers, 313-313A Li Po Chun Chambers, Hong Kong.	General Commercial Co. 1964	Import/Export, 903 On Lok Yuen Bldg., Hong Kong.
Eric White Associates (H.K.) Ltd. 1962	Public Relations Consultants, 901 Queen's Theatre Bldg., Hong Kong.	Far Eastern Shippers 1960	Exporters, Manufacturers, 61 Wyndham Street, 1st floor, Hong Kong.	Framjee, S. & Co. 1960	Import/Export, 73 Wyndham Street, 2nd floor, Hong Kong.	General Commercial Corp. Ltd. 1958	Import/Export, 1302 Union House, Hong Kong.
Ernest Trading Corporation 1950	General Import/Export, 250 Alexandra House, Hong Kong.	Fashionwigs Company 1964	Exporters, Manufacturers, 49 Lyttelton Road, 1st floor, Hong Kong.	Francois d'Hardivilliers Ltd. 1946	Import/Export, 628 Union House, Hong Kong	General Far Eastern Trading Co. Ltd. .. 1964	General Import/Export, P. & O. Building, 9th floor, Connaught Road Central, Hong Kong.
Esmail, H. M. H. & Sons 1941	Import/Export, Manufacturers, 1003 Hang Seng Bank Bldg., Hong Kong.	Federal Merchandise Co. 1960	Exporters Manufacturers, 822-824 Central Building, Hong Kong.	Frank Trading Corporation 1964	Import/Export, 80 Nathan Road, 14th floor, B, Kowloon.	General Mercantile Co., Ltd. 1964	Import/Export, 313 China Emporium Bldg., Hong Kong.
Esso Standard Oil (Hong Kong) Ltd. 1962	Marketing Petroleum Products, Li Po Chun Chambers, 15th floor, Hong Kong.	Federation of Hong Kong Industries, The .. 1960	Promoters of Industries in the Colony, United Chinese Bank Bldg., 12th floor, Hong Kong.	Freezinhot Bottle Co., Ltd. 1960	Manufacturers, Chungking Mansions, A1, 3rd floor, Kowloon.	General Textiles Agencies 1964	Import/Export, Manufacturers' Representatives, 621-622 Alexandra House, Hong Kong.
Everbright Trading Corporation 1962	Import/Export, Buying Agents, Manufacturers' Representatives, 204 Wilson House, 25-27, Wyndham Street, Hong Kong.	Fehaco Limited 1951	Import/Export, Manufacturers, United Chinese Bank Bldg., 9th floor, Hong Kong.	Friden International S.A. 1965	Import/Export, 72 Nathan Road, 7th floor, Kowloon.	German China Traders, The 1956	Import/Export, Manufacturers' Agents, 121 China Building, Hong Kong.
Everett Steamship Corporation S/A 1946	Steamship Operators, 230 Union House, Hong Kong.	Feld, F. & Co., Ltd. 1932	General Import/Export, 1131-2 Man Yee Building, Hong Kong.	Friesland Trading Co., Ltd. The 1939	General Import/Export, Holland House, 1st floor, Hong Kong.	Getz Bros. & Co., Inc. 1941	International Merchants, Steamship Agents, 416 Edinburgh House, Hong Kong.
Everising Industries 1963	Import/Export, 602 Mohan's House, Hong Kong.	Fennkong Limited 1963	Import/Export, 1103 Hang Chong Bldg., Hong Kong.	Fun Fat Trading Co. 1960	Import/Export, 223 Wing Lok St., West, Hong Kong.	Gibb, Livingston & Co., Ltd. 1861	General Merchants, Shipping, Insurance and Govt. Agents, Hang Seng Bank Bldg., 11th floor, Hongkong.
Everlist Manufacturing Co. 1956	Exporters, Manufacturers, 1101 Hing Wai Bldg., Hong Kong.	Fidelity Export-Import Co., The 1960	Import/Export, Manufacturers' Representatives, 904 Cheong K. Building, Hong Kong.	Fung Chau Chip 1956	Import/Export, 127 Leighton Road, Hong Kong.	Gidumal, O.K. & Watumull Ltd. 1957	Import/Export, 57 Wyndham Street, Hong Kong.
		Fidelity Mercantile Co. 1956	Import/Export, Manufacturers, 419-420 Marina House, Hong Kong.	Fung, C. Y. & Co. 1963	Import/Export, Manufacturers' Representatives, 1701, Hang Chong Bldg., Hong Kong.		

Gill, F. B.	1952	Greenwood Company	1958	Harriman Realty Co., Ltd.	1948	Hinson Co., Ltd.	1954
Marine Surveyors, 302-3 Fung House, Hong Kong.		Import/Export, Manufacturers' Agents, 171 Wanchai Road, 1st floor, Hong Kong.		Real Estate Agents, Surveyors, Property Consultants, Union House, 14th floor, Hong Kong.		General Import/Export, 802-5 Shell House, Hong Kong.	
Gilman & Co., Ltd.	1861	Guaranty Company	1959	Harrisons & Crosfield (Hong Kong) Ltd. ..	1961	Hip Hing Hong Co., Ltd.	1954
Import/Export, Shipping, Insurance Motor Agents, Alexandra House, 9th floor, Hong Kong.		Import/Export, 502 Chinese General Chamber of Commerce Bldg., Hong Kong.		General Merchants, Insurance and Commission Agents, 403A Chartered Bank Bldg., Hong Kong.		Import/Export, Manufacturers' Representatives, 34 Ko Shing St., Hong Kong.	
Gilmore & Co.	1954	Gulab, A. D.	1947	Harvey Main & Co., Ltd.	1955	Hip Shing Cheong	1962
Import/Export, 404 Hing Wai Building, Hong Kong.		Import/Export, Manufacturers' Representatives, 43 Wyndham Street, Hong Kong.		Technical and Scientific Engineers, 310-311 Gloucester Building, Hong Kong.		Import/Export, 80 Jervois Street, Hong Kong.	
Global Corporation Ltd.	1962	Gutwirth & Sons (M) Ltd.	1953	Hay Nien Co., Ltd.	1961	Hip Shing Industrial Factory Ltd. .. .	1957
Import/Export, Manufacturers' Representatives, 207 Yu To Sang Bldg., Hong Kong.		Import/Export, 1313-1315 Central Building, Hong Kong.		Import/Export, 8th floor, B, 18 Fenwick Street, Hong Kong.		Manufacturers, 65/7 King Yip St., Kun Tong, Kowloon.	
Global Supplies Co.	1962	Haking W. Industries (Mechanics & Optics) Ltd.	1948	Hechtel, O.P. & Co., Ltd.	1962	Hip Shing Tai Co.	1960
Import/Export, 416-A Li Po Chun Chambers, Hong Kong.		Manufacturers, 494 King's Road, Hong Kong.		Import/Export, 8th floor, B, 18 Fenwick Street, Hong Kong.		Import/Export, 9 Kwong Yuen St., East, Hong Kong.	
Globe Trading Co., Ltd.	1941	Hale, Hamilton (Hong Kong) Ltd. .. .	1956 ⁴	Heera Trading Co. (H.K.) Ltd	1947	Hip Shing Timber Co.	1957
Import/Export, Manufacturers' Representatives, United Chinese Bank Bldg., Hong Kong.		General Import/Export, 261 Prince Edward Road, Grd. floor, Kowloon.		Import/Export, Indenters, 2-4 Li Yuen St., West, Hong Kong.		Import/Export, Sawmill, LZ 1299 Fuk Wah Street, Castle Peak Road, Kowloon.	
Goddard & Co., Ltd.	1951	Halford & Company	1963	Heng Kei Hong	1964	Hip Yick Co., Ltd.	1956
Import/Export, Manufacturers' Representatives, 103/4 Victory House, Hong Kong.		Import/Export, 40 Stanley Street, 1st floor, Hong Kong.		General Import/Export, 1106 Central Building, Hong Kong.		Import/Export, Manufacturers, 806-7 Man Yee Building, Hong Kong.	
Golden Industrials Ltd.	1965	Hammett, David J., Ltd.	1965	Heng Lee & Co.	1962	Hiranand M.	1956
Import/Export, Commission Agents, 606-8 Pioneer Building, Mongkok, Kowloon.		Import/Export, 804 Bank of East Asia Bldg., Hong Kong.		Import/Export, Manufacturers' Representatives, 92 Jervois Street, 1st floor, Hong Kong.		Import/Export, Manufacturers' Representatives, 10-12 Wyndham St., 6th fl., Hong Kong.	
Golding, F. W., Ltd.	1933	Hang Cheong Tai Import & Export Co. ..	1961	Henry Electrical (Hongkong) Corporation ..	1962	Hiraoka & Co. (H.K.) Ltd.	1965
Cotton Controllers, Rms. 417-8, 9 Ice House Street, Hong Kong.		Import/Export, 19 Queen's Street, 2nd floor, Hong Kong.		Import/Export, Manufacturers, 414 Kun Tong Road, 3rd floor, Kun Tong, Kowloon.		Import/Export, 1702 Hang Chong Building, Hong Kong.	
Goodwill Import Export Co.	1950	Hang Cheong Yuen Hong	1961	Henry Handicraft Factory Ltd.	1963	Hockings Trading Co.	1963
Import/Export, Manufacturers' Representatives, 1005 Commercial House, Hong Kong.		Import/Export, 138 Wing Lok Street, West, Hong Kong.		Import/Export, Manufacturers, 209 Great China House, Hong Kong.		Import/Export, Manufacturers' Representatives, Buying Agents, Rm. M-2, Ivy House, 18-20 Wyndham St., Hong Kong.	
Goodwood Trading Co.	1963	Hang Cheung Shing	1949	Henry International Traders	1963	Hoechst Chemical Products, Ltd.	1961
Import/Export, Manufacturers' Representatives, 63 Printing House, Hong Kong.		Manufacturers, 43 Queen's Road, C., Hong Kong.		Import/Export, Manufacturers, 414 Kun Tong Road, 3rd floor, Kun Tong, Kowloon.		Importers 408-412 Chartered Bank Bldg., Hong Kong.	
Goodyear Trading Co.	1963	Hang Seng Bank, Ltd.	1959	Heong Tung Hong	1964	Holland-China Trading Co., Ltd.	1899
Exporters, Manufacturers, 603B Fife Building, Kowloon.		77 Des Voeux Rd., C., Hong Kong.		Import/Export, Manufacturers, 2 San Lau Street, Ground floor, Kowloon.		Import/Export, 301-310 Alexandra House, Hong Kong.	
Gordon Woodroffe & Co. (Far East) Ltd. ..	1950	Hang Sun Jewellery Factory	1960	Herald International, Ltd.	1957	Holms Trading Co., The	1964
Import/Export, Manufacturers' Agents, 319-22 Edinburgh House, Hong Kong.		Manufacturers, Chung Yuen Mansion, 1st Flr. 23 Healthy St., East, North Point, Hong Kong.		Import/Export, 801/5 Wing On Life Bldg., Hong Kong.		Import/Export, 633 Union House, Hong Kong.	
Gosho Co., Ltd. (H.K. Branch), The .. .	1960	Hang Tai & Fung Co., Ltd.	1946	Hermes & Co., Ltd.	1962	Hongkong Aircraft Engineering Co., Ltd. ..	1956
Import/Export, 1002-5 Takshing House, Hong Kong.		Import/Export, Commission Agents, 205 Fu House, Hong Kong.		Import/Export, Grand Building, 7th floor, Hong Kong.		Overhaul, repair and servicing of aircraft, Kai Tak Airport, Kowloon.	
Grand Manufacturing Co.	1963	Hanson Mercantile Company	1964	Herring, G. (H.K.) Ltd.	1957	Hongkong Canton Export Co., Ltd. .. .	1933
Exporters, Manufacturers, Grand Industrial Bldg., 750 Cheungshawan Road, Kowloon.		Import/Export, 605 Hing Wai Bldg., Hong Kong.		Manufacturers, Beutron House, 152 Island Road, Aberdeen, Hong Kong.		Import/Export, Insurance, Shipping and Manufacturers' Representatives, 1801-3 Hang Seng Bank Bldg., Hong Kong.	
Grandeur Aluminium Mfg. Co., Ltd. .. .	1960	Hardy Development Co. (H.K.) Ltd.	1951	Hilton of Hong Kong, Ltd.	1964	Hongkong Carpet Manufacturers, Ltd. ..	1962
Manufacturers, LZ 3390 Ngau Tau Kok, Kowloon.		Import/Export, Manufacturers' Representatives, 504-5 Gloucester Building, Hong Kong.		Hoteliers, 2A Queen's Road, C., Hong Kong.		Manufacturers, 34 St. George's Bldg., Hong Kong.	
Great China Match Co., Ltd.	1949	Harilela's	1953	Hind Corporation	1954	Hong Kong Chiap Hua Manufactory Co. (1947) Ltd., The	1950
Manufacturers, 409 Bank of East Asia Bldg., Hong Kong.		General Import/Export, 32-4 Nathan Road, Kowloon.		Import/Export, 13 Hollywood Road, Grd. floor, Hong Kong.		Shipbreakers, Manufacturers and Traders, Fung House, 9th floor, Hong Kong.	
Great China Trading Co.	1948	Harley Mullion & Co. (Hong Kong) Ltd. ..	1963	Hindustan Trading Co., Ltd.	1956	Hong Kong & China Gas Co., Ltd. .. .	1896
General Import/Export, Manufacturers' Representatives, 840/842 Alexandra House, Hong Kong.		Shipping, 608 Shell House, Hong Kong.		Import/Export, 102-103 Mohan's House, Hong Kong.		Public Utility, Gloucester Building, 2nd floor, Hong Kong.	
Green Island Cement Co., Ltd.	1900	Harms & Marcus (H.K.) Ltd.	1958	Hing Lee & Co.	1954	Hongkong Chinese Bank, Ltd., The .. .	1962
Import/Export, Manufacturers, Lane, Crawford House, Hong Kong.		Import/Export, 805/7 Yu To Sang Bldg., Hong Kong.		Import/Export, 20 Hing Lung St., 1st floor, Hong Kong.		8 Duddell Street, Hong Kong.	
		Harold & Co.	1963	Hing Wah Battery Factory (H.K.) Ltd. ..	1956	Hongkong Daimaru Dept. Store Co., Ltd.	1963
		Import/Export, Manufacturers, Buying Agents, Pinocine Building, 7th floor, 82, Queen's Road, Central, Hong Kong.		Manufacturers, 82 To Kwa Wan Road, Kowloon.		Department Store, Paterson Street, Causeway Bay, Hong Kong.	
						Hongkong Development Corporation .. .	1955
						General Exporters, 507 Man Yee Building, Hong Kong.	

Hong Kong & Eastern Shipping Co., Ltd. The 1944 Shipowners, Agents and Brokers, 131/6 Jardine House, Hong Kong.	Hongkong Overseas Traders 1964 Import/Export, Hanchung Mansion, 5th floor, Kowloon.	Hong Kong Watch Band Manufacturing Co. Ltd. 1960 Manufacturers, 207 Man Yee Building, Hong Kong.	Humphreys, Boyle & Co., Ltd. 1948 Import/Export, Manufacturers' Representatives, 14 Pottinger Street, 5th floor, Hong Kong.
Hong Kong Electric Co., Ltd. The 1909 Public Utility, Electric House, Tee House Street, Hong Kong.	Hong Kong Overseas Trading Co. 1964 Import/Export, Manufacturers' Representatives, 729 Li Po Chun Chambers, Hong Kong.	Hongkong & Whampoa Dock Co., Ltd. .. 1895 Kowloon Docks, Hunghom, Kowloon.	Humphreys Estate & Finance Co., Ltd. .. . 1940 Real Estate, 1901-2 Union House, Hong Kong.
Hongkong Enamelware Factory, Ltd. .. . 1955 Exporters, Manufacturers, 413 Alexandra House, Hong Kong.	Hong Kong Pacific Co. 1959 Exporters, Manufacturers, 902 Ka Wah Baok Bldg., Hong Kong.	Hongkong World Export Co. 1964 Import/Export, 42 Wyndham Street, 4th floor, Hong Kong.	Hung Cheong (Hop Kee) Co. 1959 Import/Export, 7 Kwong Yuen Street, East, Hong Kong.
Hong Kong Export Co. 1963 Import/Export, 401 Li Po Chun Chambers, Hong Kong.	Hongkong Pacific Trading Co., Ltd. .. . 1955 Import/Export, Manufacturers' Representatives, 128-130 Bonham Strand, East, 1st floor, Hong Kong.	Hong Kong & Yaumati Ferry Co., Ltd. The 1946 144-8 Des Voeux Road, C., 1st floor, Hong Kong.	Hung Cheung Rattan Co. 1956 Manufacturers, 339 Laichikok Road, Kowloon.
Hongkong Export Lines, Ltd. 1963 Shipping Agents, 800 Chartered Bank Bldg., Hong Kong.	Hong Kong Plastic Manufactory 1963 Exporters, Manufacturers, 6, Wing Hong Street, Castle Peak Road, Kowloon.	Hong Ying Co., The 1959 Import/Export, 604 Wing On Life Bldg., Hong Kong.	Hung Tat Co. 1960 Import/Export, Manufacturers, 712 Central Building, Hong Kong.
Hong Kong Flour Mills Ltd. 1955 Exporters Millers, 1419-22 Union House, Hong Kong.	Hong Kong Products Trading Co. 1957 Exporters, 801 Cheong Hing Bldg., Kowloon.	Honour Trading Ltd. 1959 Import/Export, 32 St. George's Bldg., Hong Kong.	Hunt, William & Co. (International) Inc. 1946 General Import/Export, Manufacturers' Representatives, 316 Hongkong Bank Bldg., Hong Kong.
Hongkong Foreign Manufactory 1962 Import/Export, 36-38 Wyndham Street, 5th floor, Hong Kong.	Hongkong Property Owners Association .. 1939 c/o Hong Nin Savings Bank Ltd., 2nd floor, 186 Des Voeux Road, C., Hong Kong.	Hop Hing Hong 1953 Import/Export, 114 Des Voeux Road, Central, 2nd floor, Hong Kong.	Huntley Trading Co. 1947 Import/Export, 209A China Building, Hong Kong.
Hong Kong Glove Manufacturing Co., Ltd. 1957 Exporters, Manufacturers, 703-4 Regent House, Hong Kong.	Hong Kong Rattan Ltd. 1964 Exporters, Manufacturers, 20A Carnarvon Road, 1st floor, Kowloon.	Hop Hing Loong Co. 1951 Import/Export, 225 Wing Lok Street, West, Hong Kong.	Hutchison, John D. & Co., Ltd. 1903 General Import/Export, Union House, 11th floor, Hong Kong.
Hongkong Handicraft Co. 1962 Import/Export, Manufacturers, 1033 Yee Kuk Street, 3rd floor, Castle Peak Road, Kowloon.	Hongkong Realty & Trust Co., Ltd. .. . 1948 Property Owners, Financiers Union House, 14th floor, Hong Kong.	Hop Hing Trading Co. 1960 Import/Export, Manufacturers' Representatives, 15 Queen Street, 2nd floor, Hong Kong.	Hwang, William & Co., Ltd. 1959 Import/Export, Ship Owners and Agents, 415 Central Building, Hong Kong.
Hong Kong Hotels Association 1964 Hoteliers, 16/17 Chungking Arcade, 1st floor, Nathan Road, Kowloon.	Hongkong Rope Manufacturing Co., Ltd. .. 1900 Manufacturers, 1208 Union House, Hong Kong.	Hop Shing Hong Trading Co. 1964 Import/Export, 151 Queen's Road Central, 3rd floor, Hong Kong.	I-Feng Enamelling Co. (H.K.) Ltd. 1960 Manufacturers, Chungking Mansion, A1, 3rd floor, 40 Nathan Road, Kowloon.
Hongkong Industrial Co., Ltd. The 1960 Engineers, Manufacturers, 1238/9 Union House, Hong Kong.	Hong Kong Rubber Manufactory, Ltd. .. . 1938 Manufacturers, 10-14 Hing Yip St., Grd. floor, Kun Tong, Kowloon.	Hor Kuang Flashlight Bulb Factory 1962 Import/Export, Manufacturers, 36 Ha Heung Road, Kowloon.	Imperial Chemical Industries (China) Ltd. 1919 Agents, Distributors, Union House, 16th floor, Hong Kong.
Hongkong Industrial Development Co. .. 1960 Import/Export, Commission Agents, 811 Yu To Sang Bldg., Hong Kong.	Hongkong and Shanghai Banking Corporation, The 1865 1 Queen's Road, C., Hong Kong.	Horn Trading Co., Ltd. 1957 Import/Export, Manufacturers' Representatives, Rutton Building, Hong Kong.	Imperial Exporters & Importers 1962 Import/Export, 20 Hollywood Road, 1st floor, Hong Kong.
Hongkong & Kowloon Wharf & Godown Co., Ltd., The 1903 Tsimshatsui, Kowloon.	Hongkong & Shanghai Hotels Ltd., The .. 1921 Lanc, Crawford House, Hong Kong.	Hother Trading & Steamship Co. (1957) Ltd. 1963 Shipping and Trading, 501 Grand Building, Hong Kong.	Indo American Export 1961 Import/Export, 31E Wyndham Street, 1st floor, Hong Kong.
Hong Kong Land Investment & Agency Co., Ltd., The 1903 Gloucester Building, 1st floor, Hong Kong.	Hong Kong & Shanghai Lace Co. (Kwong Kee) 1964 Import/Export, Manufacturers, 8 Wyndham Street, Hong Kong.	Hotung International Ltd. 1961 Import/Export, 2 St. George's Bldg., 3rd floor, Hong Kong.	Indo-China Steam Navigation Co., Ltd. .. 1921 Shipowners, Jardine House, Hong Kong.
Hongkong Manufacturing Co. Ltd. 1963 General Import/Export, 831-2 Man Yee Bldg., Hong Kong.	Hong Kong Spinners, Ltd. 1954 Cotton Spinners, 1003 Alexandra House, Hong Kong.	Hon Feng Feather Works, Ltd. 1953 Feather processing, 43 Henry House, Hong Kong.	Indo China Trading Co., Ltd. 1946 Import/Export, Manufacturers' Representatives, 407 Alexandra House, Hong Kong.
Hongkong Maritime Co., Ltd. 1963 Shipping Agents, 610 Li Po Chun Chambers, Hong Kong.	Hong Kong Telephone Co., Ltd. 1904 Public Utility, Lanc, Crawford House, Hong Kong.	How Sang Linen Co., Ltd. 1950 Manufacturers, 30-32 Wyndham Street, Hong Kong.	Innis & Riddle (China) Ltd. 1951 Engineers, 67-9 Des Voeux Road, Central, Hong Kong.
Hongkong Match Factory, Ltd. 1941 Manufacturers, 309 Bank of East Asia Bldg., Hong Kong.	Hong Kong Textiles (Export) Co. 1964 Import/Export, 703 Wing Ting Bldg., Hong Kong.	Howah & Co., Ltd. 1947 Import/Export, Commission Agents, Manufacturers; Representatives, 86-7 Gloucester Road, 2nd floor, Wanchai, Hong Kong.	Inter-Continental Agencies 1964 Import/Export, Manufacturers' Representatives, Commission Agents, 45 Wyndham Street, Hong Kong.
Hong Kong Mercantile Co. 1953 Exporters, 31 Wing Fung St., Hong Kong.	Hong Kong Tramways, Ltd. 1915 Sharp Street, East, Hong Kong.	Hua Tong Trading Co., Ltd. 1956 Import/Export, 48 Connaught Road, Central, 1st floor, Hong Kong.	Inter-Islands Exporters, Ltd. 1962 Import/Export, 802-5 Great China House, Hong Kong.
Hongkong Mercantile Corporation Import/Export, 1505A Cheong K. Building, Hong Kong.	Hongkong Transportation Co., Ltd. .. . 1930 Import/Export, Ocean Towing, Tug and Lighter Owners, 407/410 Marina House, Hong Kong.	Hudson & Company 1963 General Import/Export, 1305 Chiao Shang Bldg., Hong Kong.	International Beverages Co., Ltd. 1956 Bottlers, Distributors, 603-7 Edinburgh House, Hong Kong.
Hongkong Merchandise Corporation 1964 Import/Export, 804 Hing Wai Building, Hong Kong.	Hong Kong Union Embroidery Co. Ltd. .. 1955 Exporters, Manufacturers, Tonley Industrial Building, 9th floor, Cheung Sha Wan Road, Kowloon.	Huls Far East Co., Ltd. 1959 General Import/Export, 1909 Union House, Hong Kong.	International Dress Corporation 1962 Garment Manufacturers and Cloth Converters, 932-4 Cheungshawan Road, 4th/6th floors, Kowloon.

International Electrical Supply Co. 1963 Import/Export, Manufacturers' Representatives, 211 Wing Lok Street, 2nd floor, Hong Kong.	Jardine Engineering Corporation, Ltd. 1922 22 Pedder Street, Hong Kong.	Kan Ngai Sang & Co. 1956 Import/Export, Manufacturers' Representatives, 18 Stanley Street, 2nd floor, Hong Kong.	Kimatrai, J. & Co. 1958 Import/Export, 26 Hollywood Road, Grd. floor, Hong Kong.
International Import & Export Co. 1955 General Import/Export, 504 Commercial House, Hong Kong.	Jardine, Matheson & Co., Ltd. 1861 Jardine House, Pedder Street, Hong Kong.	Karanjia, C.M. & Co. 1938 Import/Export, -52 Wyndham Street, Hong Kong.	Kin Fung Hong 1960 Import/Export, Manufacturers' Representatives, 179 Wing Lok Street, West, Hong Kong.
International Marketing Exchange, Ltd. .. 1937 Import/Export, 708 Union House, Hong Kong.	Jason Industrial Co., Ltd. 1960 Import/Export, Manufacturers, Cheong Wah Fty Bldg., 4th floor, Tokwawan Road, Kowloon.	Kayamally Ltd. 1961 General Drapers and Furnishers, China Building, Grd. floor, Hong Kong.	Kin Ip Co. 1962 Import/Export, 1008 Takshing House, Hong Kong.
International Merchandising Ltd. 1946 Import/Export Manufacturers' Representatives, Commission Agents 210-2 China Building, Hong Kong.	Jebsen & Co. 1896 Import/Export, Shipping, 12 Pedder Street, Hong Kong.	Kays Impex Corporation (H.K.) Ltd. 1961 Import/Export, 40-42 Wyndham Street, Hong Kong.	Kin Shing Garment Factory 1963 Exporters, Manufacturers, 42 Wing Kwong Street, 4th floor, Hungghom, Kowloon.
International Service Corporation, Ltd. .. 1961 Import/Export, Manufacturers, 64 Castle Peak Road, Kowloon.	Jet Lee Enterprises Ltd. 1955 Import/Export, Commission Agents, 213-9 China Building, Hong Kong.	Kay-Tee Corporation 1959 Import/Export, 42 Wyndham Street, 3rd floor, Hong Kong.	Kin Wah Pens Factory 1957 Import/Export, Manufacturers, 241 Queen's Road, C., Hong Kong.
International Transistor Corp. (H.K.) Ltd. 1963 Import/Export, Manufacturers, 204 Hongkong Bank Bldg., Hong Kong.	Jhaveri, H.A. & Co. (H.K.) Ltd. 1953 Import/Export, Commission Agents, 21 Wyndham Street, 1st floor, Hong Kong.	Kees, O. & Co. (H.K.) Ltd. 1941 General Import/Export, 9 Ice House Street, 8th floor, Hong Kong.	King, W.V. & Sons (H.K.) Ltd. 1959 Import/Export, 181 Queen's Road, C., Hong Kong.
Interocean Mercantile Corp. 1952 Import/Export, 1003 Hing Wai Building, Hong Kong.	Jih Istin Trading Co. 1963 Import/Exports, 901 Liu Chong Hing Bank Bldg., Hong Kong.	Keller, Ed. A. & Co., Ltd. 1920 Import/Export, Edinburgh House, 2nd floor, Hong Kong.	King Fung Trading Co. 1951 Import/Export, 4 Queen's Road, C., Hong Kong.
Inter-Pacific Supplies Co. 1962 Import/Export, 410 Central Building, Hong Kong.	Johnson, Stokes & Master 1895 Solicitors, Notaries, Hongkong Bank Bldg., 4th floor, Hong Kong.	Kelly Bros. Mfg. Co., Ltd. 1946 Manufacturers, 786-8 Cheung Sha Wan Road, Kowloon.	King Kee Hong 1961 Import/Export, 422 Central Building, Hong Kong.
Ip, Matthew & Co. 1946 Exporters, Wyndham Mansion, 5th Floor, Hong Kong.	Johnsons & Co. 1963 Exporters, Manufacturers, 44 Lock Road, Grd. floor, Kowloon.	Kelly International Corporation 1957 Import/Export, Manufacturers' Agents, 1102-1103 Cheong K. Building, 84-86 Des Voeux Road, C., Hong Kong.	King's Dyeing & Weaving Fty. 1963 Exporters, 1204 Wong House, 26-30 Des Voeux Road West, Hong Kong.
Ipekjian Brothers, Ltd. 1947 Wholesalers, 240 Alexandra House, Hong Kong.	Jokhi, S. F. & Co. 1962 Import/Export, Commission Agents, 38 Wyndham St., 2nd floor, Hong Kong.	Kewalram, G. & Sons (H.K.) Ltd. 1965 Import/Export, 30-32 Wyndham Street, 5th floor, Hong Kong.	Kinway Garments Ltd. 1963 Import/Export, 404 Victory House, Hong Kong.
I. S. Brothers Co. 1954 Import/Export, 1306 Wing On Life Bldg., Hong Kong.	Joseph & Co. 1950 Import/Export, 604-607 Liu Chong Hing Bank Bldg., Hong Kong.	Kewalram Jhamatmal 1946 Import/Export, 26 Hollywood Road, 1st floor, Hong Kong.	Kirei Company 1963 Import/Export, Manufacturers' Representatives, 518 Man Yee Bldg., Hong Kong.
Island Navigation Corporation, Ltd. 1963 Shipping Agents, 802 Chartered Bank Bldg., Hong Kong.	Jub Tai Choon, Ltd. 1956 Exporters, Manufacturers, Li Cheng Uk Village, Castle Peak Road, Kowloon.	Kewalsons, R. V. 1952 Import/Export, 45 Pottinger St., 2nd floor, Hong Kong.	Kirpalani, M. (H.K.) Ltd. 1955 Import/Export, 22 Hollywood Road, 2nd floor, Hong Kong.
Island Paint Co. 1963 Manufacturers, 1605 Union House, Hong Kong.	K-K Pacific (H.K.) Ltd. 1963 General Import/Export, 1205 Central Building, Hong Kong.	Khemchand & Sons 1953 Import/Export, 32 Ice House Street, 1st floor, Hong Kong.	Kishinchand & Sons (H.K.) Ltd. 1948 Import/Export, 61 Wyndham Street, 3rd floor, Hong Kong.
Jacks, William & Co., (Hong Kong) Ltd. 1948 Engineers, General Merchants, 1811-1815 Union House, Hong Kong.	Kader Industrial Co., Ltd. 1948 Import/Export, Manufacturers, I.L. 6904 King's Road, North Point, Hong Kong.	Khunglin & Co. 1954 Import/Export, 103 Wellington House, Hong Kong.	Kishinchand Chellaram (1954) Ltd. 1940 Import/Export 537-9 Alexandra House, Hong Kong.
Jackson Mercantile Trading Co. 1951 Import/Export, 1003 Commercial House, Hong Kong.	Kadoorie, Sir Elly & Sons 1940 Industrial Financiers, St. George's Building, Hong Kong.	Kian Gwan Co. (China) Ltd. 1940 Import/Export, Manufacturers' Representatives, 310 Hongkong Bank Bldg., Hong Kong.	Kishoo & Sons 1959 Import/Export, Manufacturers' Representatives, 21 Wyndham Street, Grd. floor, Hong Kong.
Jackson Traders 1963 Import/Export Manufacturers' Representatives, 502 United Building, Hong Kong.	Kai Fook Company 1965 Import/Export, 12 Lee Yuen Street East, 2nd floor, Hong Kong.	Kie Fung Hong 1956 Import/Export, 606 Hing Wai Building, Hong Kong.	Kiu Foong Enamel Factory (Hongkong) Ltd. 1955 Exporters, Manufacturers, Pak On Bldg., 1st floor, Kowloon.
Jackson Trading Co., Ltd. 1951 Import/Export, 1107 Central Building, Hong Kong.	Kai It Battery Factory, Ltd. 1953 Manufacturers, 905 On Lok Yuen Bldg., Hong Kong.	Kien Hwa (1958) Ltd. 1951 General Import/Export, Commission Agents, 402B Alexandra House, Hong Kong.	Kiu On Hong 1955 General Import/Export, Manufacturers' Representatives 227-9 Man Yee Bldg., Hong Kong.
Jacobson van den Berg (Hongkong) Ltd. .. 1949 General Import/Export, 409-412 Edinburgh House, Hong Kong.	Kai Ming Trading Co., Ltd. 1949 Import/Export, Manufacturers' Representatives, 802 Bank of East Asia Bldg., Hong Kong.	Kien Yuen Trading Co. 1962 Import/Export, 606A Li Po Chun Chambers, Hong Kong.	Kink Kwong Co. 1960 Import/Export, 172 Wing Lok Street, Hong Kong.
Jaekel, A. & Co. (H.K.) Ltd. 1964 Import/Export, 704 5 Fu House, Hong Kong.	Kailey, H.G. & Co., Ltd. 1950 Import/Export, Manufacturers' Representatives, 16 Stanley Street, Hong Kong.	Kim Nguan Co., Ltd. 1961 Import/Export, 57 Jervois Street, Hong Kong.	Kong Wing Company 1964 Import/Export, Manufacturers, 315 Man Yee Bldg., Hong Kong.
Jan Sin Mee Garments Mfg. Co. 1963 Exporters, Manufacturers, 104 6 Bedford Road, Top Floor, Kowloon.	Kam Lee Drawn Work Co. 1958 Exporters, Manufacturers, 7 On Hing Terrace, 1st floor, Hong Kong.	Kimatrai, B.D. & Co., Ltd. 1955 Import/Export, 101 Mohan's House, Hong Kong.	Koo Yuen Hong Ltd. 1951 Import/Export, Manufacturers' Representatives, 204 Victory House, Hong Kong.

Kowloon Enamelware Factory, Ltd. 1957	Exporters, Manufacturers, 106 Queen's Road, C., 2nd floor, Hong Kong.	Kwun Yick Co. Ltd. 1964	Import/Export, Manufacturers. 623 Man Yee Building, Hong Kong.	Lee, S. W. & Co., Ltd. 1946	Real Estate Agents, 623-627 Central Bldg., Hong Kong.	Long On Hong, Ltd. 1961	Import/Export, Shipping and Insurance Agents, 1301-2 Li Po Chun Chambers, Hong Kong.
Kowloon Rattan Ware Co. 1963	Exporters, Manufacturers, 33 Hankow Road, Ground floor, Kowloon.	L. M. N. Corporation 1946	Exporters, 402 Victory House, Hong Kong.	Lee Sang Trading Co. 1964	Import/Export, 74 Portland Street, Grd. floor, Kowloon.	Longmans, Green (Far East) Ltd. 1958	Publishers, 443 Lockhart Road, Hong Kong.
Kowloon Silk Store 1960	Import/Export, Tailors 3A Cameron Road, Kowloon.	La Salle & Co. 1961	Import/Export, Far East Mansion, 14th floor, Kowloon.	Leighton Textiles Co., Ltd. 1962	Manufacturers, 479-479A Castle Peak Road, 6th floor, Kowloon.	Lowe, Bingham & Matthews 1907	Chartered Accountants, Alexandra House, 7th floor, Hong Kong.
Kowloon Textile Industries Ltd. 1950	Cotton Spinners and Weavers, 1201 Chartered Bank Bldg., Hong Kong.	Lai Wah 1957	Import/Export, Custom Tailors, 41 Hankow Road, Kowloon.	Leong, Henry G. Estates, Ltd. 1964	Financiers, Estate Agents, 54-55 Henry House, Hong Kong.	Loxley, W. R. & Co., Ltd. 1903	Import/Export, Shipping and Insurance Agents, Jardine House, 11th floor, Hong Kong.
Krips International 1961	Import/Export, Manufacturers' Representatives, Mohan's House, 5th floor, Hong Kong.	Lai Wo Hong Import & Export Co. 1963	Import/Export, Manufacturers, Commission Agents, 1204 Regent House, Hong Kong.	Lepack Co. (1955) Ltd. 1939	Import/Export, Manufacturers' Agents, 238 Alexandra House, Hong Kong.	Loyal Textile Commodities Co. 1961	Import/Export, 35 Shui Hing Bldg., Hong Kong.
Kuang Ming Flashlight Bulb Mfg. Co., Ltd. 1955	Exporters, Manufacturers, Cheong Wah Fty. Bldg., 5th floor, Kowloon.	Lammert Brothers 1919	Auctioneers, Appraisers, Surveyors, Peddler Building Basement, Hong Kong.	Let San Hong 1963	Import/Export, Manufacturers, 18 Queen's Road, West, 1st floor, Hong Kong.	Lu, K. K. & Co., Ltd. 1963	Import/Export, 826 Li Po Chun Chambers, Hong Kong.
Kui Hing Co. 1962	Import/Export, Manufacturers' Representatives, 706 Regent House, Hong Kong.	Landis Brothers & Co., Ltd. 1949	Import/Export, Manufacturers' Representatives, 1406 Hang Seng Bank Bldg., Hong Kong.	Leung Yew Ltd. 1948	Import/Export, 805-6 Hang Seng Bank Bldg., Hong Kong.	Luang Kiu Co., Ltd. 1959	General Import/Export, 95 Des Voeux Road, 1st floor, Hong Kong.
Kum Hing Land Development & Agency Co., Ltd. 1964	Land and Property agents, 9 Wing Kat Street, 1st floor, Hong Kong.	Lane, Crawford, Ltd. 1903	General Import/Export, Lane, Crawford House, Hong Kong.	Leung Yuk Kee 1947	Manufacturers, 99E Wellington Street, Hong Kong.	Lucky Enamelware Factory, Ltd. 1954	Manufacturers, 142 Pau Chung Street, Kowloon.
Kung Fat Hong 1964	Import/Export, 802 Kwong On Bank Bldg., Hong Kong.	Lansing & Co., Ltd. 1953	Import/Export, Manufacturers' Representatives, Pun Tak Bldg., 478-488 Lockhart Road, Hong Kong.	Lever Bros. (China) Ltd. 1950	Import/Export, Distributors, 1502 Hang Seng Bank Bldg., Hong Kong.	Lucky Industrial Co. Ltd. 1965	Exporters, Manufacturers, 13-15 Gordon Road, 2nd floor, Causeway Bay, Hong Kong.
Kung Shing & Co., Ltd. 1960	General Import/Export, Grand Building, 11th floor, Hong Kong.	Lap Heng Co., Ltd. 1948	Import/Export, Marina House, 5th floor, Hong Kong.	Li Chung Sang Enterprises, Ltd. 1963	Import/Export, Manufacturers' Representatives, 304A Princess Building, Kowloon.	Luen Cheong Hong, Ltd. 1950	Import/Export, Manufacturers' Representatives, 210 Chartered Bank Bldg., Hong Kong.
Kut Kee Hong 1963	Import/Export, Manufacturers, 130 Wellington Street, Hong Kong.	Le, C. Kuen & Co. Thomas 1939	Public Accountants and Auditors, Alexandra House, 10th floor, Hong Kong.	Liddell Bros. & Co. (Hong Kong) Ltd. .. 1946	Import/Export, Union House, 11th floor, Hong Kong.	Luen Hing Cheung 1960	General Import/Export, 69 Jervois Street, 1st floor, Hong Kong.
Kwok Wah Company 1964	General Import/Export, 722 Central Bldg., Hong Kong.	Lea Hin Co. Ltd. 1957	Import/Export, Manufacturers' Representatives, 32 O'Brien Road, Hong Kong.	Lien Fa Loong Plastic Factory 1962	Exporters, Manufacturers, 1307 Liu Chong Hing Bank Bldg., Hong Kong.	Luen Hing Fat, Ltd. 1961	Import/Export, 131 Des Voeux Road, West, Hong Kong.
Kwong Cheong Seng 1963	Import/Export, 51 Bonham Strand, West, Hong Kong.	Lea Tai Textile Co. Ltd. 1958	Manufacturers', 804 Chartered Bank Bldg., Hong Kong.	Lilaram, V. & Co., Ltd. 1950	Import/Export, 40 Wyndham Street, Grd. floor, Hong Kong.	Lukas International Ltd. 1964	Exporters, Manufacturers, 810 Union House, Hong Kong.
Kwong Fat Yuen Hong 1946	Import/Export, 31-F Wyndham Street, Hong Kong.	Lebel (China) Ltd. 1941	Import/Export, 528 Alexandra House, Hong Kong.	Lim Teck Lee (Hongkong) Ltd. 1961	Import/Export, Manufacturers' Agents, Hongkong Metropolitan Bank Bldg., 3rd floor, Hong Kong.	Lune Hing Cheong Co., Ltd. 1955	General Import/Export, 33 Des Voeux Road, West, Grd. floor, Hong Kong.
Kwong Hing Hong 1947	Import/Export, Manufacturers' Representatives, China Building, 3rd floor, Hong Kong.	Lee & Lau Company 1963	Import/Export, 405 Wellington House, Hong Kong.	Lincoln & Co. (HK) Ltd. 1964	Import/Export, 743 Union House, Hong Kong.	Lung Mei Company Ltd. 1964	Exporters, Manufacturers, 31 San Shan Road, Grd. floor, Kowloon.
Kwong Hop & Co. 1948	General Import/Export, 404 Wing On Life Bldg., Hong Kong.	Lee, Douglas & Co. 1961	Import/Export, 907 Bank of East Asia Bldg., Hong Kong.	Ling Nam Hardware Mfg. Co., Ltd., The 1946	Exporters, Manufacturers, 67-77 Ha Heung Road, Kowloon.	Luxmi Export Import Co. 1955	Import/Export, 5 Hollywood Road, Grd. floor, Hong Kong.
Kwong Loong Tai Co., Ltd. 1955	Manufacturers, 94-8, Larch Street, Kowloon.	Lee Hysan Estate Co., Ltd. 1960	Real Estate, 603-7 Edinourgh House, Hong Kong.	Lip Hong Silk Mills Co., Ltd. 1960	Import/Export, Manufacturers, 42 Bonham Strand, East, 1st floor, Hong Kong.	Lynn, Peter & Co. 1963	Import/Export, Commission Agents, Manufacturers' Representatives, 301 China Emporium Bldg., Hong Kong.
Kwong Ming & Co. 1949	General Import/Export, 716 Central Bldg., Hong Kong.	Lee, James S. & Clothing Mill (H.K.) Ltd. 1956	Import/Export, Manufacturers' Representatives, Haiphong Mansion, 1st floor, Kowloon.	Lobo, P. J. & Co. Ltd. 1946	General Import/Export, Alexandra House, Hong Kong.	Lyon Enterprise Ltd. 1960	Import/Export, Manufacturers' Representatives, 25 Des Voeux Road, C., 10th floor, Hong Kong.
Kwong Shun Hong 1960	Import/Export, Manufacturers' Representatives, 910 Ka Wah Bank Bldg., Hong Kong.	Lee Heng Hong 1964	Import/Export, 83 Bonham Strand West, 1st floor, Hong Kong.	Local Property & Printing Co., Ltd. 1946	Property and Printing, 13 Duddell Street, Hong Kong.	Macao Electric Lighting Co., Ltd. 1922	Public Utility, 11 Largo do Senado, Macao.
Kwong Tai Cheong 1962	Dealers in Rattanware, 60 Granville Road, Kowloon.	Lee On & Co. 1963	Import/Export, Manufacturers' Representatives, 162 Wing Lok Street, West, Hong Kong.	Lombard Insurance Co., Ltd. 1895	Insurance, Jardine House, Pedder Street, Hong Kong.	Mackinnon, Mackenzie & Co. of Hong Kong, Ltd. 1863	Shipping Agents, Hang Seng Bank Bldg., 7th floor, Hong Kong.

Magnificent Dragon & Co., Ltd.	1964	General Import/Export, 163-A Sai Yeung Choi Street, Grd. floor, Kowloon.	Mar Fan, Charles & Co.	1950	Certified Accountants, Chartered Secretaries, 107-10 No. 9 Ice House Street, Hong Kong.	Mercantile Bank, Ltd.	1861	7 Queen's Road, C., Hong Kong.	Moyles, J. P. & Co., Ltd.	1961	Import/Export, Manufacturers, 112 Edinburgh House, Hong Kong.	
Maidstone Trading Co., Ltd.	1960	Import/Export, 401-2 Regent House, Hong Kong.	Marconi International Marine Co., Ltd., The Manufacturers, North Point Wharves Ltd., Office Block, 3rd floor, North Point Road, Hong Kong.	1925	Mark, V. International Ltd.	1960	Import/Export, Shipping, 18 Fenwick Street, 8th floor A, Hong Kong.	1964	Muller & Phipps (China) Ltd.	1959	Manufacturers' Representatives, 1139 Alexandra House, Hong Kong.	
Majestic Textiles Ltd.	1959	Exporters, Manufacturers, 1208-10 Central Building, Hong Kong.	Marklin Advertising, Ltd.	1960	Advertising Agency, 1101 Shell House, Hong Kong.	1960	Merck Sharp & Dohme (Asia) Ltd.	1960	1964	Murjani Brothers	1964	Import/Export, 20 Hollywood Road, Grd. floor, Hong Kong.
Mak, L. Y. & Co.	1948	General Import/Export, Manufacturers' Representatives, 212-3 Windsor House, Hong Kong.	Marklene (Hong Kong) Ltd.	1959	Import/Export, Manufacturers, 813 Shaws Building, Kowloon.	1959	Messageries Maritimes, Cie des	1863	1953	Murjani Textiles & Agencies, Ltd.	1953	Import/Export, Manufacturers, 52 Wing Kwong Street, Kowloon.
Mak, W. S. & Sons, Ltd.	1946	Import/Export, 204 Holland House, Hong Kong.	Martnichen Limited	1960	Import/Export, Manufacturers' Representatives, 1403 Hang Seng Bank Bldg., Hong Kong.	1960	Metal & Textile (Metex) Traders, Ltd.	1962	1950	Murli Mohandas Co.	1950	Import/Export, 20 Hollywood Road, 2nd floor, Hong Kong.
Mak's Industrial Co.	1961	Manufacturers, 546-548 Nathan Road, 2nd floor, Kowloon.	Marsman Hongkong China, Ltd.	1939	Contractors, Mining, Quarrying and Industrial Engineers, 202 Hongkong Bank Bldg., Hong Kong.	1939	Meyer Manufacturing Co., Ltd.	1956	1946	Mutual Mining & Trading Co.	1946	Import/Export, Mining, 708-10 Holland House, Hong Kong.
Man Cheong Garment Factory	1962	Manufacturers, 76 Fuk Wa Street, Kowloon.	Martin & Co.	1938	Accounting, Auditing, 603 Chartered Bank Bldg., Hong Kong.	1938	Ming Cheong Hong	1962	1964	Myer & Co. (Hong Kong) Ltd.	1964	General Import/Export, 1307 Takshing House, Hong Kong.
Man Chong Rattan Co. (Hongkong) Ltd.	1949	Import/Export, Manufacturers, 802 Central Building, Hong Kong.	Master, K. & Co., Ltd.	1962	Import/Export, 506 Wellington House, Hong Kong.	1962	Ming Ming Trading Co.	1951	1964	Nambang Moolan (H.K.) Co.	1964	Import/Export, 907 Bank of East Asia Bldg., Hong Kong.
Man Hi Trading Co., Ltd.	1960	Import/Export, Manufacturers' Representatives, 721 Central Building, Hong Kong.	Maxim & Co.	1922	Import/Export, Commission Agents, 807 Bank of East Asia Bldg., Hong Kong.	1922	Ming Wah Electric Bulbs Fty.	1957	1951	Nam Hing Hong, Ltd.	1951	Import/Export, Manufacturers, 1017 Alexandra House, Hong Kong.
Man Tai Hong	1956	Import/Export, Distributors, Manufacturers' Representatives, 49 Des Voeux Road, West, Hong Kong.	Mayai & Co.	1963	Exporters, Manufacturers, 120 Nathan Road, Kowloon.	1963	Minnesota (3M) Far East Ltd.	1962	1957	Nam Jam Factory, Ltd.	1959	Manufacturers, 156 Fuk Wa Street, Kowloon.
Manchu Gems, Ltd.	1959	General Import/Export, Cutters and Polishers of Jade, 231 Nathan Road, 2nd floor, Kowloon.	Mayfair Garment Factory	1960	Exporters, Manufacturers, Gee Chang Fty. Bldg., 4th floor, Kowloon.	1960	Mitsubishi Shoji Kaisha Ltd.	1957	1963	Nam Sing Trading Co. Ltd.	1963	Import/Export, 15 On Lan Street, 1st floor, Hong Kong.
Mandarin Textiles, Ltd.	1952	Manufacturers, Dynasty Building, 60 To Kwa Wan Road, Kowloon.	Mayflower Corporation	1962	Exporters, Manufacturers, 1209 Central Building, Hong Kong.	1962	Mitsui & Co., Ltd.	1960	1962	Nau Feng Enamel Factory (H.K.) Ltd.	1962	Exporters, Manufacturers, 611 Edinburgh House, Hong Kong.
Manetta & Co.	1956	Import/Export, Building Contractors, 31 Shui Hing Bldg., Hong Kong.	May Lai Wah Plastic & Jewellery Fty.	1963	Import/Export, Manufacturers, 198 Wing Lok Street, 3rd floor, Hong Kong.	1963	Mitsui O.S.K. Lines, Ltd.	1964	1962	Nan Fung Co. Ltd.	1953	Import/Export, Room 304, 6 Queen's Road, C., Hong Kong.
Manhattan Garments, Ltd.	1959	Manufacturers, 1059-61 Tung Chau Street, Kowloon.	Mee Tak Co., Ltd.	1946	Import/Export, 29 Jervois Street, Hong Kong.	1946	Mobil Oil Hong Kong Ltd.	1903	1962	Nanshing Color & Chemical Co., Ltd.	1962	Import/Export, 1208 Liu Chong Hing Bank Bldg., Hong Kong.
Mann, Peter	1952	Import/Export, Manufacturers' Representatives, Pedder Building, 3rd floor, Hong Kong.	Meena International (HK) Ltd.	1963	Import/Export, 42-A Hollywood Road, 3rd floor, Hong Kong.	1963	Mode Elite, Ltd.	1962	1962	Nan Sing Polyethylene Products Manufactory, Ltd.	1962	Manufacturers, 1159-61 Canton Road, Mongkok, Kowloon.
Manners Trading, Ltd.	1954	Import/Export, Union House, 17th floor, Hong Kong.	Meiken Trading Co., Ltd.	1960	Import/Export, 501 Li Po Chun Chambers, Hong Kong.	1960	Modern Embroidery Co.	1962	1963	Nanyang Cotton Mill Ltd.	1950	Manufacturers, 1830 Union House, Hong Kong.
Manning, E. & Co., Ltd.	1946	Import/Export, 1026-7 Union House, Hong Kong.	Mejchers & Co.	1869	Import/Export, 1201-4 Takshing House, Hong Kong.	1869	Moh Heng Enterprising Co.	1963	1963	Nash & Dymock Ltd.	1963	Import/Export, Sutherland House, Hong Kong.
Mansion Trading Co.	1960	Import/Export, Manufacturers, 406 Great China House, Hong Kong.	Menhinick, A. & Co.	1964	Market and Export Consultants, Suite 705, Tower Court, Hysan Avenue, Hong Kong.	1964	Mollers' (Hongkong) Ltd.	1946	1959	Nathan Rattan Furniture Co.	1963	Exporters, Manufacturers, 28 Mody Road, Ground Floor, Kowloon.
Manufacturers Life Insurance Co., The	1946	1702 Union House, Hong Kong.	Mercantile Agency (HK), The	1962	Import/Export, Manufacturers' Representatives, 809 Yu To Sang Bldg., Hong Kong.	1962	Monotype Corp. (Far East) Ltd., The	1959	1947	Nathurmal, M. Bros.	1952	Import/Export, Manufacturers' Representatives, 61 Wyndham Street, Grd. floor, Hong Kong.
Manufacturers United Trading Co.	1946	Import/Export, 306 China Building, Hong Kong.	Morton, Charles Bros. & Co.	1946	General Importers, 605 China Building, Hong Kong.	1946	Morgan, Charles, Lendrum Ltd.	1947	1946	National Cash Register Co. (H.K.) Ltd.	1948	Office Equipment Merchants, 99 King's Road, North Point, Hong Kong.

National Lacquer & Paint Products Co., Ltd. 1940	Manufacturers, 403 China Building, Hong Kong.	Oliver & Co., (H.K.) Ltd. 1952	Import/Export, Manufacturers' Representatives, 209 Alexandra House, Hong Kong.	Overseas Export & Import Co. 1947	Import/Export, 19 Wyndham Street, Hong Kong.	Perfecto Mercantile Corp. Ltd. 1964	Import/Export, 508 Hing Fat House, Hong Kong.
National Trading Co. 1948	General Import/Export, China Building, 5th floor, Hong Kong.	Olympia Products (Export) Corporation . . 1963	Exporters, Room 405, 37 Queen's Road, Central, Hong Kong.	Overseas Textiles Ltd. 1958	Cotton Spinners and Weavers, 1401-2 Takshing House, Hong Kong.	Perfekta Enterprises 1961	Rubber and Plastic Manufacturers, 58 Connaught Road, West, Hong Kong.
"Neko" (Hong Kong) Ltd. 1963	Import/Export, 704 Great China House, Hong Kong.	Omega Metal Manufacturing Co., Ltd. . . 1962	Manufacturers, 16 Chun Tin Street, Kowloon.	Overseas United Trading Co. 1961	Import/Export, 166 Wing Lok Street, W., 1st floor, Hong Kong.	Peter, Charles & Co. 1964	Import/Export, 805 Hang Seng Bank Bldg., Mongkok, Kowloon.
Nestle's Products (Hong Kong) Ltd. . . . 1911	Importers, Distributors, 401/6 Marina House, Hong Kong.	Omega Trading Corporation 1961	Exporters, Han Chung Mansion, 10th floor, Kowloon.	Pacific Far East Line, Inc. 1963	Shipowners, 616 Union House, Hong Kong.	Pfizer Corporation 1957	Importers of Pharmaceuticals, 1536 Union House, Hong Kong.
Netherland Selling Organisation, Ltd. . . 1947	Import/Export, United Chinese Bank Bldg., 9th floor, Hong Kong.	On Lok Yuen Co. Ltd. 1964	Manufacturers, 27A Des Voeux Road, C., Hong Kong.	Pacific Traders 1959	Import/Export, 510 Man Yee Building, Hong Kong.	Pfizer Eastern Corporation 1964	Distributors, Taikoo Sugar Refinery, Godown A, 4th floor, North Point, Hong Kong.
Netherlands Trading Society 1915	Bankers, 9 Queen's Road, C., Hong Kong.	Onward Industrial Co. (1964) 1963	Import/Export, Manufacturers' Representatives, 1002 Shui Hing House, Kowloon.	Pak Wo Cheung Co., Ltd. 1955	Import/Export, 134 Bonham Strand, East, 4th floor, Hong Kong.	Pheroze Mehta & Co. 1958	Import/Export, 5 Hollywood Road, 1st floor, Hong Kong.
New China Enamelware Co. (H.K.) Ltd. . . 1955	Manufacturers, 406 Hongkong Bank Bldg., Mongkok, Kowloon.	On Hing 1964	Import/Export, 56 Des Voeux Road, West, Hong Kong.	Pakistan Hong Kong Trading Co. Ltd. . . 1964	Import/Export, Suite D-4, 4th floor, Chung King Mansions, Nathan Road, Kowloon.	Phoenix Textiles, Ltd. 1954	Exporters, Cotton Weavers, 308, No. 9 Ice House Street, Hong Kong.
New China Enterprises Co., Ltd. 1947	Import/Export, 48 Ko Shing Street, Hong Kong.	On Wing & Co., Ltd. 1960	Import/Export, 1121 Central Building, Hong Kong.	Palmer & Turner 1946	Architects and Civil Engineers, Hongkong Bank Bldg., Hong Kong.	Pioneer Corporation 1962	Import/Export, Manufacturers' Representatives, 73 Wyndham Street, 3rd floor, Hong Kong.
New World Ltd., The 1964	General Import/Export, 204 Yu To Sang Bldg., Hong Kong.	Orient Buyers Ltd. 1963	Import/Export, 4B Princess Court Bldg., Kowloon.	Pan American World Airways 1959	Alexandra House, Hong Kong.	Polex Industrial Co. 1963	Import/Export, Manufacturers, Mongkok Mansion, 10th floor, Block 'A', Kowloon.
New World Trading Co. 1963	Import/Export, Manufacturers' Representatives, 618-20 Central Building, Hong Kong.	Orient Mercantile Co. 1957	Import/Export, 512 China Building, Hong Kong.	Pao Hsing Cotton Mill Co., Ltd. 1952	Cotton Spinners and Weavers, 51-3 Printing House, Hong Kong.	Polex Products Co., Ltd. 1962	Exporters, Manufacturers, 202 Hing Wai Building, Hong Kong.
New Zealand Insurance Co., Ltd. 1947	Insurance, 14-16 Pedder Street, 2nd floor, Hong Kong.	Oriental American Agencies 1951	Import/Export, Commission Agents, China Building, 6th floor, Hong Kong.	Pao Hung Co. 1960	Commission Agents, Manufacturers' Representatives, 701 Kwong On Bank Bldg., Hong Kong.	Pollytoys Limited 1964	Manufacturers, 41A/43 Smithfield, Kennedy Town, Hong Kong.
Ng, Joe & Co. 1961	Exporters, Resident Buying Agents, 1112 Central Building, Hong Kong.	Oriental Pacific (Import & Export) Ltd. . . 1963	General Exporters, 931-5 Man Yee Bldg., Hong Kong.	Parekh, K. P. & Sons 1964	Import/Export, 63 Wyndham Street, Grd. floor, Hong Kong.	Po Huat & Co. 1963	Import/Export, 99 Connaught Road, West, 2nd floor, Hong Kong.
Ng Yee Hing Company Weaving & Dyeing Factory 1947	Exporters, Manufacturers, 52 Tsun Yip Street, Kun Tong, Kowloon.	Oriental Pacific Mills, Ltd. 1960	Exporters, Manufacturers, 933-5 Man Yee Building, Hong Kong.	Parke Davis International Ltd. 1962	Import/Export, 146 Jardine House, Hong Kong.	Po Shing Shoe Co., Ltd. 1959	Manufacturers, 231-247 Un Chau Street, Kowloon.
Ngai Cheong Shirts Mfg. Co. 1948	Import/Export, Manufacturers, 44A Lyndhurst Terrace, Hong Kong.	Oriental Producers Exporting Corporation . . 1957	Exporters, Manufacturers, 41-42 Henry House, Hong Kong.	Parkson & Co. 1962	Import/Export, 304 Wilson House, 25-7 Wyndham St., Hong Kong.	Pordes, Frederick & Co., Ltd. 1951	Import/Export, 209-10 Gloucester Building, Hong Kong.
Nippon Yusen Kaisha. Hong Kong Branch Shipping, P. & O. Building, 9th floor, Hong Kong. 1963		Oriental Products & Trading Co. 1950	Exporters, Manufacturers, 43 Caine Road, Hong Kong.	Parsram, T. & Co. 1963	Import/Export, Manufacturers' Representatives, 31-E Wyndham Street, Ground floor, Hong Kong.	Potex Company Ltd. 1961	General Import/Export, Manufacturers, 1005 Regent House, Hong Kong.
Nissho Co. Ltd., Hong Kong Branch . . 1964	Import/Export, 1131 Central Building, Hong Kong.	Oriental Progress Co., Ltd. 1959	Import/Export, 308-9 Hongkong Bank Bldg., Mongkok, Kowloon.	Paulsen & Bayes-Davy, Ltd. 1955	Marine Surveyors, Consultants, 404-6 Alexandra House, Hong Kong.	Pravin & Co. 1951	Import/Export, Manufacturers, 73 Wyndham Street, Hong Kong.
Nolasco, H. & Co., Ltd. 1947	Import/Export, Shipping, 82/3 Henry House, Hong Kong.	Oriental Publicity Service 1965	Publishers, 616-B Central Building, Hong Kong.	Pavri Brothers & Co. 1956	General Import/Export, 437-8 Alexandra House, Hong Kong.	Precision Moulds Ltd. 1964	Manufacturers, Engineers, 1234 Union House, Hong Kong.
Northern Feather Works, Ltd. 1946	Import/Export, 209 Chartered Bank Bldg., Hong Kong.	Oriental Syndicate Ltd., The 1958	Financiers, General Merchants, 1031 Man Yee Bldg., Hong Kong.	Pavri, K. S. & Sons, Ltd. 1940	Import/Export, Commission Agents, Rutton Building, Hong Kong.	Premier Products Corporation of Hongkong Ltd. 1964	Import/Export, 301A Victory House, 5 Wyndham Street, Hong Kong.
Oceanic Lloyd Limited 1963	Shipping Agents, 206 Shell House, Hong Kong.	Oriental United Co., Ltd. 1954	Import/Export, 618-620 Marina House, Hong Kong.	Peat, Marwick, Mitchell & Co. 1946	Chartered Accountants, 801 Alexandra House, Hong Kong.	President Hotel, The 1964	Hoteliers, 67 Nathan Road, Kowloon.
Oceanic Producers, The 1953	Export, 1105 Cheong K. Building, Hong Kong.	Oriental World Trading Co. Ltd. 1964	Import/Export, Commission Agents, Room 503, 24-25 Connaught Road, C., Hong Kong.	Perfect Bike & Hardware Supply Co. . . 1964	General Import/Export, 401 Ivy House, Wyndham Street, Hong Kong.	Pressure Piling Co., (Hong Kong) Ltd. . . 1959	Piling Contractors and Foundation Specialists, Union House, 12th floor, Hong Kong.
Olin Mathieson Far East Ltd. 1960	General Import/Export, Shell House, 10th floor, Hong Kong.	Orion Gloves Ltd. 1957	Manufacturers, 416 Edinburgh House, Hong Kong.	Perfect Products Co. 1965	Import/Export, 804 Ka Wah Bank Bldg., Hong Kong.		
		Overseas Chinese Investment & Development Co., (H.K.) Ltd. 1959	Import/Export, 30 Bonham Strand, W., 1st floor, Hong Kong.				

Progressive Trading Co. 1964 Import/Export, 1001 Ka Wah Bank Bldg., Hong Kong.	Rhima Dyes & Chemical Co., Ltd. 1951 Importers, 1913 Union House, Hong Kong.	Sanda Mercantile Co. 1955 Import/Export, 305 Hing Fat House, Hong Kong.	Shree Bharat Trading Co. 1959 Import/Export, 40 Wyndham St., 5th floor, Hong Kong.
Promise Trading Co. 1959 Import/Export, 438 Nathan Road, 6th floor, Kowloon.	Rico Limited 1959 Wui Wah Factory Bldg., N.K.I.L. 2828 Wing Hong Street, Kowloon.	Sanyei Corporation Hongkong, Ltd. 1962 Import/Export, 83-85 Chatham Road, 1st and 2nd floors, Kowloon.	Shriro (China) Ltd. 1948 Import/Export, Manufacturers, 831 Alexan- dra House, Hong Kong.
Prosperity Clothings Co. 1963 Exporters, Manufacturers 411 Central Bldg., Hong Kong.	Rieckermann (Hongkong) Ltd. 1954 Import/Export, Manufacturers' Re- presentatives, 1001-2 Man Yee Building, Hong Kong.	Sarson Traders 1959 Import/Export, 1622 Central Building, Hong Kong.	Shroff & Co. 1952 Exporters, Manufacturers' Representatives, 26 Ice House Street, Hong Kong.
Prosperous Manufacturing Corporation 1964 Import/Export, Manufacturers, 1402 Cheung Kee Bldg., Des Voeux Road, C., H.K.	Rising Sun Company 1964 Exporters, 45-6, Haiphong Road, 1st floor, Kowloon.	Sassoon, E.D., Banking Co., Ltd. 1936 Holland House, Hong Kong.	Shui Hing Co., Ltd., The 1960 Department Store, Shui Hing Building, Hong Kong.
Quan Wa Cheong 1961 Import/Export, 81 Connaught Road, West, 1st floor, Hong Kong.	Robertson, Wilson & Co., Ltd. 1913 General Merchants, Manufacturers' Re- presentatives, Union House, 11th floor, Hong Kong.	Schafer Enterprises (Australasia) Ltd. . . . 1964 Exporters, Manufacturers, 701 Alexandra House, Hong Kong.	Shun Cheong S.N. Co. Ltd. 1965 Shipping, 24 Connaught Road West, 1st floor, Hong Kong.
Quelle Far East Office 1963 Wholesalers, 1004 Regent House, Hong Kong.	Robinson, J. L., & Co., Ltd. 1940 Import/Export, Manufacturers' Representa- tives, 514-6, No. 9 Ice House St., Hong Kong.	Scientific Service Co., Ltd. 1957 Import/Export, Pleasure Craft Manufactur- ers, 447-50 Alexandra House, Hong Kong.	Shun Hing Electronic Trading Co. Ltd. . . . 1962 Import/Export, 602 Central Building, Hong Kong.
R. C. N. Trading Co., Ltd. 1963 Import/Export, 507 Hongkong Bank Bldg., Nathan Road, Kowloon.	Rochson Corporation 1961 Import/Export, 431 Man Yee Building, Hong Kong.	Scott & English Ltd. 1946 General Import/Export, 131 Jardine House, Hong Kong.	Shun Shing Fat Trading Co. 1957 General Import/Export, 54 Bonham Strand, East, Hong Kong.
Radha Kishoo & Co. 1949 Import/Export, Manufacturers' Re- presentatives, 401 Mohan's House, Hong Kong.	Ross, Martin Co. 1960 Import/Export, 430, Mandarin Hotel, Hong Kong.	Scott & O'Donnell 1964 Engineers, Naval Architects, Surveyors, 312 Li Po Chun Chambers, Hong Kong.	Siber Hegner & Co. (H.K.), Ltd. 1947 Import/Export, Chartered Bank Bldg., 10th floor, Hong Kong.
Radhakrishin & Sons 1959 Import/Export, Commission Agents, 35 Wyndham Street, 1st floor, Hong Kong.	Rox Industrial Co., Ltd. 1959 Manufacturers, Chung Hing Industrial Mansions, 7th floor, Kowloon.	Sea Express Lines, Ltd. 1963 Shipping, North Point Wharves, Office Block 1st floor, Hong Kong.	Siemssen & Co. (Hong Kong) Ltd. 1959 Import/Export, Engineering, 6 Queen's Road, C., Hong Kong.
Rajko Traders 1964 Import/Export, 9 Hollywood Road, Grd. floor, Hong Kong.	Royal Insurance Co., Ltd. 1917 904 Chartered Bank Bldg., Hong Kong.	Sears, Roebuck Overseas Inc. 1959 Exporters, 310 Hongkong Bank Bldg., Mongkok, Kowloon.	Singapore Trading Co., Ltd. 1952 Import/Export, 19 Queen Street, Hong Kong.
Rank Overseas Film Distributors Ltd. . . . 1962 Film Distributors, 201 Holland House, Hong Kong.	Royal InterOcean Lines 1904 Shipping, Alexandra House, Hong Kong.	Secure Traders Ltd. 1963 Import/Export, 132-34 Bonham Strand East, Hong Kong.	Singer Sewing Machine Co. 1955 602 Chartered Bank Bldg., Hong Kong.
Rathour, H. S. & Co. 1937 Import/Export, 45 Wyndham Street, Hong Kong.	Russ & Co. 1952 Solicitors, Notaries, 523-5 Gloucester Bldg., Hong Kong.	Shahaneys (HK) Ltd. 1963 Import/Export, Manufacturers' Representa- tives, 37 Hollywood Road, 1st floor, Hong Kong.	Sino-American Trade Advancement Co. . . 1952 Import/Export, Shipping, 524 Central Building, Hong Kong.
Ray & Lawrence Co. 1964 Import/Export, Commission Agents, 65-66 Chungking Mansions, Kowloon.	Ruttonjee, H. & Son, Ltd. 1946 Dina House, 1st floor, Hong Kong.	Shamsons 1962 Import/Export, 18 Printing House, Hong Kong.	Sino-British (Hong Kong) Ltd. 1947 Import/Export, Roofing and Tiling Specialists, 811 813 Edinburgh House, Hong Kong.
Ray-O-Vac International Corporation 1955 Exporters, Manufacturers, 604 Chartered Bank Bldg., Hong Kong.	Saalheimer, A. (Far East) Ltd. 1964 Exporters, P. & O. Bldg., 8th floor, Hong Kong.	Sharp, G.F. & Co., S.A. 1953 Shipping, 10-14 Caxton House, Hong Kong.	Sino-Thai Trading Co. 1962 Import/Export, 68 Connaught Road, West, Hong Kong.
Rayman Trading Co., Ltd. 1959 Import/Export, Manufacturers' Re- presentatives, 314-6 Man Yee Bldg., Hong Kong.	Sadhwanis 1951 Import/Export, 47 Wyndham Street, 1st floor, Hong Kong.	Shebah Traders 1960 Import/Export, Wine Merchants, 524 Nathan Road, 9th floor, Kowloon	Siu, Y.N., Agencies 1962 Manufacturers' Distributors, 3A Cameron Road, 4th floor, Kowloon.
Regina Knitting & Dyeing Mills, Ltd. . . . 1964 Import/Export, 616A Central Building, Hong Kong.	Sales, A. de O. & Co., Ltd. 1955 Exporters, Alexandra House, Hong Kong.	Sheila's 1958 Import/Export, Custom Tailors, 3B Cameron Road, Kowloon.	Smart Shirts Manufacturers Ltd. 1959 Manufacturers, 705 Commercial House, Hong Kong.
Rehufus, W. F. 1954 Import/Export, 32 Kennedy Road, Grd. floor, Hong Kong.	Samme Trading Co., Ltd. 1964 Import/Export, 401 Hing Wai Bldg., Hong Kong.	Shell Company of Hong Kong Ltd., The . . 1908 24-8 Queen's Road, C., Hong Kong.	Societe Francaise d'Enterprises de Dragages et de Travaux Publics 1959 Engineering Construction, Rms. 1001, 1006, Shui Hing House, Kowloon.
Reiss, Bradley & Co., Ltd. 1936 Import/Export, Manufacturers' Agents, 608-614 Union House, Hong Kong.	Sam Tsang & Co. 1953 Import/Export, Manufacturers' Representa- tives, 339 Wang Hing Bldg., Hong Kong.	Shell Electric Mfg., Co. 1960 Manufacturers, 14 Lin Fa Kung Street, West, Hong Kong.	Soco Textiles (Hong Kong) Ltd. 1959 Import/Export, Cotton Spinners, 1007-9, 37 Queen's Road, C., Hong Kong.
Reliance Trading Corporation 1954 Import/Export, 423 Central Building, Hong Kong.	San Hall & Co. 1963 Import/Export, 409 China Building, Hong Kong.	Sheng Hsi Foo & Co. 1964 Import/Export, 27 Gilman Bazaar, Ground floor, Hong Kong.	Somerville, W.A. & Co., Ltd. 1964 Import/Export, 1101 Takshing House, Hong Kong.
Revco Enterprises 1964 Import/Export, 304 China Emporium Bldg., Hong Kong.	San Miguel Brewery Hongkong, Ltd. . . . 1933 Brewery, 95 Jardine House, Hong Kong.	Shewan Tomes (Traders) Ltd. 1903 Import/Export, Union House, 12th floor, Hong Kong.	Sonca Industries Ltd. 1954 Exporters, Manufacturers, 34 Tai Yau St., San Po Kong, Kowloon.
Rewsons Corporation 1963 Import/Export, 51 Mirador Mansions, 2nd floor, Kowloon.	Sanda Co., Ltd. 1962 Import/Export, 1308 Liu Chong Hing Bank Bldg., Hong Kong.	Shin Kee & Co. 1962 Import/Export, Manufacturers' Representa- tives, 49 Bonham Strand East, 1st floor, Hong Kong.	Souley Toys Manufactory 1963 Exporters, Manufacturers, With Yuen Bldg., 2nd floor, Taikoktsui, Kowloon.

Sony Corporation of Hongkong Ltd.	1960	Sui Fung Hong	1961	Swire & MacLaine Ltd.	1946	Textiles Unique Agency	1959
Manufacturers, 20 St. George's Building, 1st floor, Hong Kong.		Import/Export, 21 Bonham Strand, West, Hong Kong.		Import/Export, Manufacturers' Representa- tives, Union House, Hong Kong.		Import/Export, Commission Agents, 31E Wyndham Street, 2nd floor, Hong Kong.	
South British Insurance Co., Ltd., The . .	1917	Sui Heong Yuen	1929	Tack Tai Yuen Co.	1961	Thai-Union Trading Co., Ltd.	1960
Fire, Marine and Accident Insurance, 1819 Union House, Hong Kong.		Import/Export, Manufacturers' Representa- tives, 34-36 Hing Lung Street, Hong Kong.		Import/Export, 30 Bonham Strand, West, Hong Kong.		Import/Export, 806 Takshing House, Hong Kong.	
South China Knitting Factory	1961	Sum Shui Co.	1960	Tai Fung Trading Co., Ltd.	1960	Thai Wa Trading Co.	1955
Import/Export, Manufacturers, 136-142 Bedford Road, Kowloon.		Import/Export, Manufacturers, 349B Des Vocux Road, West, 8th floor, Hong Kong.		Import/Export, Manufacturers, 404 Regent House, Hong Kong.		Import/Export, 55 Bonham Strand, West, Hong Kong.	
South China Mercantile Co., Ltd.,	1961	Sun Co., Ltd. The	1927	Tai Hang Jewellery	1959	Thakkar & Co.	1962
Import/Export, Manufacturers' Representa- tives, 512 China Building, Hong Kong.		Department Store, 181 Des Vocux Road, C., Hong Kong.		Import/Export, 1602 Hang Seng Bank Bldg., Hong Kong.		Import/Export, 629 Central Building, Hong Kong.	
South China Morning Post Ltd.	1955	Sun Fook Hing Garments Factory	1963	Tai Hang Manufacturing Ltd.	1929	Thomas, F. M. Trading Co.	1962
Publishers, Morning Post Building, Hong Kong.		Import/Export, Manufacturers, 124-28 Bed- ford Road, Kowloon.		Manufacturers, 115 Windsor House, Hong Kong.		Import/Export, Ka Wah Bank Bldg., Hong Kong.	
South China Traders	1946	Sun Fung Co., Ltd.	1948	Tai Hing Hong	1964	Thoresen & Co., Ltd.	1915
Import/Export, Manufacturers' Representa- tives, 9 Ice House Street, Hong Kong.		Import/Export, Commission Agents, Jam Fair Bldg., 14th floor, Hong Kong.		Import/Export, Manufacturers' Agents, 405 Hing Wai Bldg., Hong Kong.		Shipping, Airline and Insurance Agents, Union House, 18th floor, Hong Kong.	
South Sea Textile Mfg. Co., Ltd.	1958	Sun Hing Co.	1963	Tai Hong & Co.	1961	Tien Fu Trading Co.	1954
Manufacturers, 501 Edinburgh House, Hong Kong.		Import/Export, Shipping & Commission Agents, 905-6 Takshing House, Hong Kong.		Import/Export, Peninsula Apartments, 3rd floor, Kowloon.		Import/Export, 1406 Central Building, Hong Kong.	
South Sea Trading Co., Ltd.	1959	Sun-Kwong Mfg. Co.	1963	Tai Kee Hong Watch Co.	1964	Times Trading Co.	1960
Exporters, 314 China Building, Hong Kong.		Import/Export, Manufacturers, 605 C.M.A. Building, 64-65 Connaught Rd., C., Hong Kong.		Exporters, Manufacturers, 1204 Ka Wah Bank Bldg., Hong Kong.		Import/Export, 322 Li Po Chun Cham- bers, Hong Kong.	
South Textiles Ltd.	1962	Sun Lee Co.	1955	Tai On Hong	1960	Tin Hing Rattan Co.	1964
Manufacturers, 515 Edinburgh House, Hong Kong.		Import/Export, 19 Ho Tung Bldg., 3rd floor, Hong Kong.		Import/Export, 24 Kweilin St., Grd floor, Shamshuipo, Kowloon.		Exporters, Manufacturers, 341 Laichikok Road, Shamshuipo, Kowloon.	
Spano Weaving Dye Co.	1965	Sun Ming & Co	1961	Tai Wah Hong Electric Mfg. Fty. . . .	1960	Ting Fung Iron Works, Ltd.	1955
Import/Export, 504 Bonham Building, Hong Kong.		Manufacturers, 806 Commercial House, Hong Kong.		Manufacturers, 244 Hai Tan Street, Kowloon.		Exporters, Manufacturers, 605 Wing On Life Bldg., Hong Kong.	
Spicers (Export) Ltd.	1959	Sun Shine Industrial Co. Ltd., The . . .	1963	Taikoo Dockyard & Engineering Ltd. . .	1941	Tong Seng Co.	1960
Paper Suppliers, Printing Machines and Printing Equipment, 104 Rediffusion House, Hong Kong.		Import/Export, 305 Great China House, Hong Kong.		Shipbuilding, Repairing, Quarry Bay, Hong Kong.		Import/Export, 336 Wang Hing Building, Hong Kong.	
Sprague World Trade Corporation	1961	Sun Wah Ornaments Manufactory	1964	Taikoo Sugar Refining Co., Ltd. The . . .	1957	Tonley & Co., Ltd.	1948
(Eastern Branch), Manufacturers, Nan Kang Building, North Point, Hong Kong.		Manufacturers, 13-15 Gordon Road, 2nd floor, Causeway Bay, Hong Kong.		Union House, Hong Kong.		Import/Export, Manufacturers' Representa- tives, 1304/5 Wing On Life Bldg., Hong Kong.	
Standard Knitting Factory	1962	Sunkylite Company	1961	Tailey Company	1961	Tonwell Investment Co. (H.K.) Ltd. . . .	1964
Exporters, Manufacturers, 479 Castle Peak Road, 1st floor, Kowloon.		Manufacturers, Distributors, 204 Shaw's Building, Kowloon.		Import/Export, Manufacturers, 3 Mezz., Wang Hing Building, Hong Kong.		Import/Export, Manufacturers, 206 Li Po Chun Chambers, Hong Kong.	
Stanley Associates Ltd.	1952	Sunlight Trading Co.	1950	Tak Hing Loong	1963	Tosho Co., Ltd., Hong Kong Office, The . .	1961
Import/Export, 45 Hoi Yuen Road, Kun Tong, Kowloon.		General Import/Export, 428 Li Po Chun Chambers, Hong Kong.		Import/Export, Commission Agents, 1616 Central Building, Hong Kong.		Import/Export, Mirador Mansions, 12th floor, Kowloon.	
Stanley Shao & Co.	1957	Sunny & Co.	1946	Tangson Co., Ltd. The	1958	Traders & Suppliers, Ltd.	1949
Import/Export, Burlington House, 3rd floor, Nathan Road, Kowloon.		General Import/Export, Manufacturers' Representatives, 708 Bank of East Asia Building, Hong Kong.		Import/Export, 11 Chiu Lung Street, 1st floor, Hong Kong.		Import/Export, 307 Chartered Bank Bldg., Hong Kong.	
Star Underwear Co.	1953	Sunny & Co.	1963	Tao Fung Hong	1955	Transocean Agencies	1960
Exporters, Manufacturers, 604 Bonham Bldg., Hong Kong.		Import/Export, 102 Empire Court, 1st floor, Hysan Avenue, Hong Kong.		Import/Export, 132 Bonham Strand East, 5th floor, Hong Kong.		Import/Export, Manufacturers' Representa- tives, 515 China Building, Hong Kong.	
Stellar Industrial & Trading Corp. . . .	1963	Swatow Arts Trading Co.	1960	Tata, B. D. & Co., Ltd.	1949	Trans-Ocean Mercantile Corporation . . .	1955
Import/Export, 75-77 Wyndham Street, Hong Kong.		Exporters, 28 Wyndham Street, Hong Kong.		General Import/Export, 21 Wyndham Street, 3rd floor, Hong Kong.		Import/Export, 422 Man Yee Building, Hong Kong.	
Stewart & Co.	1957	Swatow Drawn Work Co., Ltd.	1938	Teh-Hu Sunfuh Co., Ltd.	1948	Transpacific Mutual (Hong Kong) Ltd. . .	1963
Solicitors and Notaries, 606 Gloucester Bldg., Hong Kong.		General Import/Export, United Chinese Bank Bldg., 10th floor, Hong Kong.		Import/Export, 301-2 Marina House, Hong Kong.		Trade, Research, Development, 403 Manson House, Kowloon.	
Stockland & Ferguson	1959	Swatow Weng Lee Co.	1951	Teks (Hongkong)	1963	Trans-World Electronics Ltd.	1963
Manufacturers' Representatives, 1942 Union House, Hong Kong.		Import/Export, Commission Agents, 52 Nathan Road, Kowloon.		Exporters, 10 Rutton Building, Hong Kong.		Manufacturers, Portland House, 8th floor, Ma Tau Wei Road, Kowloon.	
Style Corporation	1964	Swedish Trading Co., Ltd. The	1948	Tels, L.E. & Co., Trading Society . . .	1961	Treasure Jade Factory, The	1961
Import/Export, 301 Mohan's House, 75/77 Wyndham Street, Hong Kong.		Import/Export, 1513-21 Union House, Hong Kong.		General Import/Export, United Chinese Bank Bldg., 9th floor, Hong Kong.		Exporters, Manufacturers, 62 Granville Road, Kowloon.	
Sui Cheng Co., Ltd.	1957			Tension & Co.	1965	Tsang Fook Piano Co.	1954
Import/Export, Manufacturers' Representa- tives, 206 Bank of East Asia Bldg., Hong Kong.				Exporters, Manufacturers, 616-B Central Building, Hong Kong.		Import/Export, Manufacturers' Representa- tives, 19 Queen's Road, C., Hong Kong.	
				Textile Alliance Ltd.	1963		
				Jardine House, 10th floor, Hong Kong.			
				Textile Corporation of Hongkong Ltd. The Spinners and Weavers, 1224-5 Union House, Hong Kong.	1958		

Tsien, Jamie C. & Co., Inc.	1953	Union Embroidery Co.	1956	United Manufacturing Co.	1964	Vogue Enterprises	1957
Import/Export, 901-904 Regent House, Hong Kong.		Import/Export, 22 Wyndham Street, Hong Kong.		Import/Export, Manufacturers, New Lucky House, Block N, 4th floor, Kowloon.		Exporters, Manufacturers, 606 Central House, Hong Kong.	
Tsu, Franklin & Co.	1964	Union Insurance Society of Canton Ltd.	1885	United Overseas Enterprises, Ltd.	1961	Waco Corporation Ltd.	1963
Import/Export, 613 Man Yee Bank Bldg., Hong Kong.		Insurance, Union House, 2nd floor, Hong Kong.		Import/Export, Manufacturers' Representatives, 101-3 Yu To Sang Building, Hong Kong.		Import/Export, 41 Printing House, Hong Kong.	
Tsun Tsun Trading Co.	1946	Union International Co.	1964	United Products Ltd.	1959	Wah Fong Trading Co.	1961
General Import/Export, 7 Ice House Street, Hong Kong.		Import/Export, 1503 Hang Chong Bldg., Hong Kong.		Exporters, 905 Great China House, Hong Kong.		Import/Export, 18 Ming Lun Street, 1st floor, Tokwawan, Kowloon.	
Tung, C.C. & Co.	1949	Union Knitting Factory	1957	United States Lines Co.	1948	Wah Hing Co., Ltd.	1941
Import/Export, 1403 Hang Cheong Bldg., Hong Kong.		Manufacturers, 1107 Takshing House, Hong Kong.		Steamship Operators, 616 Union House, Hong Kong.		Exporters, 15-18 Connaught Road, C., 6th floor, Hong Kong.	
Tung Cheng Peking Trading Co.	1954	Union Mercantile Co. (Hongkong) Ltd.	1947	United Trading & Shipping Co., Ltd., The	1955	Wah Hing Trading Co.	1950
Import/Export, 19A Hankow Road, Kowloon.		General Import/Export, 204-5 Edinburgh House, Hong Kong.		Import/Export, Manufacturers' Representatives, 705-6, Jardine House, Hong Kong.		Exporters, Manufacturers, 658 Castle Peak Road, Kowloon.	
Tung Chun Company	1964	Union Metal Works, Ltd.	1952	Universal Mercantile Co., Ltd.	1959	Wah Keong Rubber Manufactory Ltd.	1940
Exporters, Manufacturers, 68 Fuk Lo Tsun Road, Kowloon.		Manufacturers, 1933-6 Union House, Hong Kong.		Import/Export, 14 Queen's Road, C., 2nd floor, Hong Kong.		Manufacturers, 4 Anchor Street, Tai Kok Tsui, Kowloon	
Tung Fat Co.	1962	Union Pacific Industrial Co. Ltd.	1963	Universal Merchandise Co.	1956	Wah Kiu Yat Po (Overseas Chinese Daily News Ltd.)	1962
Import/Export, 715 Nathan Road, 3rd floor, Kowloon.		Import/Export, Manufacturers, Pinocine Building, 5th floor, Hong Kong.		Import/Export, 735 Nathan Road, 7th floor, Kowloon.		Publishers, 106-110, Hollywood Road, Hong Kong.	
Tung Ho Hong	1962	Union Tea Trading Corp. Ltd.	1962	Universal Rattan & Plastic Fty.	1963	Wah Sang Hong Ornaments Mfg. Co.	1964
Import/Export, C.M.A. Building, 7th floor, Hong Kong.		Exporters, Manufacturers, 420 Central Building, Hong Kong.		Manufacturers, 701 Commercial House, Hong Kong.		Exporters, Manufacturers, 21 Chinese Street, 2nd floor, Hong Kong.	
Tung Sheng Dyestuffs & Trading Co.	1956	Union Trading Co.	1964	Universal Trading Corporation	1961	Wai Kee & Co.	1946
Import/Export, 501 Pedder Building, Hong Kong.		Import/Export, Manufacturers, 506 Kwong On Bank Bldg., Hong Kong.		Import/Export, 505A Wellington House, Hong Kong.		Import/Export, 1 Gilman Street, Hong Kong.	
Tung Tai Hong Rattanware Manufactory	1964	Union Trading Co., Ltd.	1915	Unoco (Hong Kong) Ltd.	1963	Wai Lok Hong	1964
Exporters, Manufacturers, 493-4 Cheung Sha Wan Factory Bldg., No. 3, Kowloon.		General Merchants, 225-230 Alexandra House, Hong Kong.		General Import/Export, 408-9 Takshing House, Hong Kong.		Import/Export, 16 On Lan Street, Ground floor, Hong Kong.	
Tung Tai Trading Co.	1952	Union Waterboat Co., Ltd.	1915	Upjohn Company S.A.	1962	Wai Sing Embroidery & Garment Fty.	1963
Import/Export, Manufacturers' Representatives, 203 Man Yee Building, Hong Kong.		Suppliers of fresh water to ships, 1928 Union House, Hong Kong.		Pharmaceutical, Tung Kin Factory Bldg., 7th floor, North Point, Hong Kong.		Manufacturers, 2 Mei King Street, Flat 38, 4th floor, Tokwawan, Kowloon.	
Tysun Florists Supplies	1963	Unison Exporters Ltd.	1963	UTC Far East Ltd.	1963	Walker Dyer & Co.	1960
Exporters, 205 Great China House, Hong Kong.		Import/Export, 304 Hing Wai Bldg., Hong Kong.		Import/Export, 1401-3 Liu Chong Hing Bank Bldg., Hong Kong.		Buying Agents, 324 Man Yee Building, Hong Kong.	
Tze Kee Co.	1954	United Agencies Ltd.	1947	Valles Steamship Co., Ltd.	1963	Wallace Harper & Co. Fed. Inc., U.S.A.	1962
Export, 206 Tsat Tse Mui Road, 6th floor Hong Kong.		Import/Export, 525-7 Alexandra House, Hong Kong.		Shipping, 803 Chartered Bank Bldg., Hong Kong.		Ford Distributors, 256 Hennessy Road, Hong Kong.	
U.S. Export Corporation	1959	United Chemical Industries Co., Ltd.	1962	Vansen Company	1964	Wallett & Co., Ltd.	1933
Import/Export, 28 Hollywood Road, 5th floor, Hong Kong.		Manufacturers, 204-5 Man Yee Building, Hong Kong.		Import/Export, 33-33A Queen's Road, C., Hong Kong.		Shipowners, Brokers, Hongkong Bank Building, Hong Kong.	
Ufinimpex Ltd.	1939	United Chinese Bank Ltd.	1954	Vanson Import & Export Co. Ltd.	1963	Wallem Lambert Brothers, Ltd.	1946
Import/Export, 1008 Hang Seng Bank Bldg., Hong Kong.		31 Des Voeux Road, C., Hong Kong.		Import/Export, 801 Great China House, Hong Kong.		Import/Export, Insurance Brokers, 119 Hongkong Bank Bldg., Hong Kong.	
Ultra Pacific Trading Co.	1948	United Commercial Co.	1962	Van Yee Trading Co.	1963	Wan Cheung Machine Cut Rattan Co.	1963
Import/Export, Manufacturers' Representatives, 105-6 Holland House, Hong Kong.		Exporters, Commission Agents, 504 China Emporium Bldg., Hong Kong.		Import/Export, 203 Commercial House, Hong Kong.		Import/Export, Manufacturers, 3-9 Shekkipmei Street, Kowloon.	
Unico Enterprises, Ltd.	1961	United Dealers Ltd.	1963	Van Yu Trading Co., Ltd.	1963	Wang Kee & Co., Ltd.	1938
Import/Export, Manufacturers' Representatives, 224-230 Hongkong Bank Bldg., Hong Kong.		Import/Export, 425 Man Yee Bldg., Hong Kong.		Import/Export, 520 Central Building, Hong Kong.		Import/Export, Ship Chandlers, Hang Seng Bank Bldg., Grd. floor, Hong Kong.	
Unination Trading Co., Ltd., The	1947	United Electric Mfg. Factory	1958	Vashi's	1960	Warne, Victor & Co. (Hongkong) Ltd.	1947
Import/Export, American International Building, Hong Kong.		Manufacturers, 912-4 Cheungshawan Road, Kowloon.		Mail Order Tailors, 10 Cameron Road, Kowloon.		Import/Export, Manufacturers' Representatives, 1118 Alexandra House, Hong Kong.	
Union Brothers Co.	1961	United Fareast Trading Co. Ltd.	1964	Vaswani, Kay D., & Co. (HK) Ltd.	1959	Wasan, S. S. & Co.	1956
Import/Export, Commission Agents, 56 Cameron Road, 1st floor, Kowloon.		Import/Export, 727 Li Po Chun Chambers, Hong Kong.		Import/Export, Commission Agents, 31F Wyndham Street, 1st floor, Hong Kong.		Import/Export, Manufacturers' Representatives, 11 Hollywood Road, 1st floor, Hong Kong.	
Union Carbide Asia Ltd.	1960	United Leathers, Ltd.	1958	Verder & Co. (H.K.) Ltd.	1949	Watanmal Boolchand Co., Ltd.	1936
Manufacturers and Merchants, Shell House, 4th floor, Hong Kong.		Importers, 201 Bonham Building, Hong Kong.		General Import/Export, 102-7 Alexandra House, Hong Kong.		Import/Export, Financiers, 18-20 On Lan Street, Hong Kong.	
Union Corporation	1964	United Lingerie Co.	1956	Victor & Co., Ltd.	1960		
Import/Export, 1006 Commercial House, Hong Kong.		Import/Export, 4 On Lan Street, Hong Kong.		Import/Export, Manufacturers' Representatives, 711 Regent House, Hong Kong.			

Watson, A.S. & Co., Ltd. 1915 Aerated Water Manufacturers, Watson Road, North Point, Hong Kong.	Wing's Industrial Works 1962 Exporters, Manufacturers, 1507 Liu Chong Hing Bank Bldg., Hong Kong.	Wo Sang & Co. 1962 Import/Export, 207 Des Voeux Road, West, 1st floor, Hong Kong.	Wyler Textiles 1958 Exporters, Cotton Spinners, 308, No. 9 Ice House Street, Hong Kong.
Wattie, J.A. & Co., Ltd. 1946 Secretaries and General Managers, 601 Marina House, Hong Kong.	Wing Lee Manufacturing Co. 1962 Exporters, Manufacturers, 512 Regent House, Hong Kong.	Wong, Edward & Co., Ltd. 1963 Import/Export, 602 Bank of East Asia Bldg., Kowloon.	Yac Seng Hong Co., Ltd. 1964 Import/Export, 236-8 Des Voeux Road, 2nd floor, Hong Kong.
Wealth Industries 1965 Exporters, Manufacturers, 235 Man Yee Building, Hong Kong.	Wing Lung Bank, Ltd. 1957 110-2 Queen's Road, C., Hong Kong.	Wong, H. P. & Bros. 1951 Import/Export, 404 Chinese General Chamber of Commerce Bldg., Hong Kong.	Yau Hing Garment Co. 1964 Manufacturers, 8-10 Man On Street, 1st floor, Taikoktsui, Kowloon.
Wearbest Garment Mfg. Co., Ltd. 1959 Manufacturers, 605 Chartered Bank Bldg., Hong Kong.	Wing On Co., Ltd. 1948 Import/Export, Department Store, 207-225 Des Voeux Road, C., Hong Kong.	Wong Hau Plastic Works & Trading Co. 1959 Manufacturers, 813 6 Li Po Chun Chambers, Hong Kong.	Yau Tai Cheung Hong 1961 Import/Export, 43 Bonham Strand, West, Hong Kong.
Wei Yit Vacuum Flask Manufactory 1955 Manufacturers, Camel House, Palm Street, Taikoktsui, Kowloon.	Wing Sang Trading Co. 1958 Exporters, 709 Yu To Sang Bldg., Hong Kong.	Wong Kwan Sang Trading Co. 1955 Import/Export, 132 Cheungshawan Road, Kowloon.	Yau Yue & Co. 1950 Import/Export, 79 Bonham Strand, East, Hong Kong.
Weinreb & Pennell Ltd. 1963 Import/Export, Factory Representatives, 1103 Yu Tong Sang Bldg., Hong Kong.	Wing Sang Yuen Hong Ltd. 1963 Import/Export, 419N Queen's Road, West Lower Basement, Hong Kong.	Wong T.C. & Co. 1962 Import/Export, Manufacturers, 505 Regent House, Hong Kong.	Yee Lee Industrial Chemical, Ltd. 1957 Import/Export, 36-8 Tung Man Street, 1st floor, Hong Kong.
Wellcome Co., Ltd. 1948 Wine and Spirit Merchants, 31 Connaught Road, C., Hong Kong.	Wing Shun Co. 1953 Import/Export, Manufacturers' Repre- sentatives, 510 Ka Wah Bank Bldg., Hong Kong.	Wong, T.M. & Co., Ltd. 1947 Import/Export, 35 Hennessy Road, Hong Kong.	Yee Sing Industrial Co., Ltd. 1958 Import/Export, 113 How Ming Street, Kun Tong, Kowloon.
Westinghouse Electric International, S.A. . . 1962 Hong Kong Branch Office of Weisa, Geneva, 224-228 Caroline Mansion, Hong Kong.	Wing Tai & Co. 1960 Exporters, Manufacturers, 123 Wing Lok Street, 1st floor, Hong Kong.	Wong, T.O. & Co., Ltd. 1946 General Import/Export, 1019-1023 Union House, Hong Kong.	Yen, Joseph & Co. 1952 Import/Export, Manufacturers, 1844 Union House, Hong Kong.
Wheelock Marden & Co., Ltd. 1947 Financiers, Union House, 12th floor, Hong Kong.	Wing Tai Trading Co. 1963 Import/Export, 14 Des Voeux Road, West, Hong Kong.	Wong Tan & Co. 1938 Chartered Accountants, 732/3 Alexandra House, Hong Kong.	Yi Chi Trading Co., (H.K.) Ltd. 1951 Import/Export, Manufacturers' Repre- sentatives, 121 Edinburgh House, Hong Kong.
Whiteaway Laidlaw & Co., Ltd. 1946 Department Store, Fung House, 18-20 Connaught Road, Hong Kong.	Wing Tat Electric Mfg. Co., Ltd. 1961 Manufacturers, 4B-C Catchick Street, West Point, Hong Kong.	Woo Brothers 1961 Import/Export, 512B Central Building, Hong Kong.	Yick Mee Jewellery Factory 1963 Manufacturers, 53 Shekkipmei Street, 1st floor, Kowloon.
Whitney Manufacturing Co. 1963 Import/Export, Manufacturers' Represen- tatives, 207 Great China Bldg., Hong Kong.	Wing Wah Enterprises Ltd. 1947 Import/Export, Shipping Agents, 47 Wing Lok Street, 1st floor, Hong Kong.	Woo Hing Tai Co., Ltd. 1961 Import/Export, Manufacturers' Repre- sentatives, 25 Ko Shing Street, Grd. floor, Hong Kong.	Yick Tai 1960 Import/Export, 184 Wing Lok Street, West, 1st floor, Hong Kong.
Wicking, Harry & Co., Ltd. 1903 Import/Export, Insurance Agents, Union House, 7th floor, Hong Kong.	Winkler & Co. (H.K.) Ltd. 1940 Import/Export, 1713 Union House, Hong Kong.	Wood & Browne 1903 Marine and Cargo Surveyors, 93-4 Jardine House, Hong Kong.	Yien Brothers & Co., Ltd. 1960 Import/Export, 801-2 Bonham Building, Hong Kong.
Wilkinson & Grist 1915 Solicitors and Notaries, 2 Queen's Road, C., Hong Kong.	Winland Trading Co., The 1964 Import/Export, Manufacturers' Represen- tatives, 201 Hennessy Road, Hong Kong.	World Button Factory, The 1957 Manufacturers, 3-3A Mongkok Road, Top floor, Mongkok, Kowloon.	Yim Seng Fat Hong 1960 Import/Export, 64 Bonham Strand, West, Hong Kong.
Williamson & Co., Ltd. 1922 Shipowners, 1504-7 Hang Seng Bank Bldg., Hong Kong.	Winner Button Factory, The 1959 Manufacturers, 502A Pedder Building, Hong Kong.	World Light Manufactory Ltd., The 1961 Manufacturers, 906 Yu To Sang Bldg., Hong Kong.	Ying Kong Co., Ltd. 1962 Import/Export, Real Estate, 15-18 Con- naught Road, C., 15th floor, Hong Kong.
Willies, W.R. & Co. 1963 Import/Export, 1506 Liu Chong Hing Bank Bldg., Hong Kong.	Winner Co. (Hongkong) Ltd. 1959 Manufacturers, 608-10 Hongkong Bank Bldg., Mongkok, Kowloon.	World-Mart (Hongkong) Enterprises Ltd. . . 1963 Import/Export, Manufacturers, Chungking Mansions, 3rd floor, Kowloon.	Ying Tai Co. 1957 Manufacturers, 88A Nathan Road, Kowloon.
Willy & Co. 1959 Import/Export, 28 Bonham Strand, West 1st floor, Hong Kong.	Winston Embroidery Co. 1964 Exporters, Manufacturers, 51 Caine Road, 2nd floor, Hong Kong.	World Trading Corporation 1948 Import/Export, 62 Bonham Strand, East, 1st floor, Hong Kong.	Ying Tai & Co. 1964 Manufacturers, 538-540 Castle Peak Road, 4th floor, Kowloon.
Wilman Rubber Products 1948 Manufacturers, 203-211 Nam Chong Street, Shamshuipo, Kowloon.	Wintergreen's Rattancraft Teakwood Furniture & Decoration Works 1965 Exporters, Manufacturers, 632 Man Yee Building, Hong Kong.	World Wide Corporation 1964 Import/Export, 30 Hollywood Road, 2nd floor, Hong Kong.	Yip Hing Trading Co. 1964 Import/Export, 1304 Ka Wah Bank Bldg., Hong Kong.
Winckleria (Far East) Ltd. 1964 Exporters, Jam Fair Bldg., 14th floor, Hong Kong.	Wireless Products Ltd. 1964 Manufacturers, 708 Takshing House, Hong Kong.	Worldwide Distributors 1963 Import/Export, Manufacturers, 451-457 Hen- nessy Road, 5th fl., Hong Kong.	Yip Shing Co. 1954 Import/Export, 809 Bank of East Asia Bldg., Hong Kong.
Wing Fong Co. 1962 Import/Export, 307 Li Po Chun Chambers, Hong Kong.	Witteawood Trading Co. 1963 Import/Export, 1101 Hing Wai Bldg., Hong Kong.	World-Wide (Shipping) Ltd. 1958 Shipping Managers and Agents, 201-6 Windsor House, Hong Kong.	Yiu Fai Co. 1961 Import/Export, 1333 Central Building, Hong Kong.
Wing Fung Enamelware & Stamping Co., Ltd. 1961 Import/Export, Manufacturers, 24 Argyle Street, 5th floor, Kowloon.	Wo Fung Trading Co. 1953 Import/Export, 1042 Union House, Hong Kong.	Wu, T.W. & Co. (H.K.) Ltd. 1962 Import/Export, Manufacturers, 809-813 Union House, Hong Kong.	Young, Alexander (London) Ltd. 1951 General Import/Export, 710 Hongkong Bank Bldg., Mongkok, Kowloon.
Wing Fung Hong 1961 Import/Export, 281 Des Voeux Road, C., Hong Kong.			Young, K.L. & Co. 1954 Public Accountants, 705-711 Central Building, Hong Kong.

