

## Selected Services Statistics

### BANKING & FINANCE

	Dec 97	Dec 98
No. of licensed banks	180	172
No. of restricted licence banks	66	60
No. of deposit-taking companies	115	101
Hong Kong dollar savings deposits rate (% per annum)	4.75	4.25
Hong Kong dollar best lending rate (% per annum)	9.50	9.00
Amount of foreign currency reserves (US\$ million)	92,823	89,625
Hang Seng Index (31.7.1964=100)	10,722.76	10,048.58
Total no. of listed companies (of which Chinese state-owned co.)	658 (39)	680 (41)
Total market capitalisation (of which Chinese state-owned co.) in HK\$ billion	3,202.6 (18.6)	2,661.7 (33.5)
Ranking in the world in terms of market capitalisation	9	11

### TELECOMMUNICATIONS

	Dec 97	Dec 98
Telephone, facsimile & datel lines (thousands)	3,624	3,708
Telephone sets (thousands)	4,685	4,765
Public mobile telephone service subscribers (thousands)	2,086	2,858
Paging service subscribers (thousands)	933	572
E-mail addresses (thousands)	N.A.	817
	1997	1998
Internet usage (thousand minutes) <sup>a</sup>	1,245,962+	5,359,015
Outward external telephone traffic (thousand minutes)	1,738,236	1,718,519

### TOURISM

	1997	1998
Total visitor arrivals from China (thousands) <sup>b</sup>	2,297	2,597
Total visitor arrivals from overseas excluding China (thousands)	8,109	6,977
Total tourism receipts (HK\$ million)	69,946	53,079
Hong Kong residents travelling to China & Macau (thousands)	37,847	43,398
Hong Kong residents travelling overseas excluding China and Macau (thousands)	3,758	4,197
Number of hotels	86	88
Number of hotel rooms	33,425	33,981
Hotel occupancy (%)	76	76

### Notes

- GDP at current prices.
  - Total public expenditure on fiscal year basis; total expenditure on GDP on calendar year basis.
  - Estimates, subject to revisions later on as more data become available.
  - Including agriculture and fishing, mining and quarrying.
  - Including utilities & construction, which are classified as service industries by the WTO.
  - Figures based on a set of composite employment estimates derived from data collected in the General Household Survey & the Quarterly Survey of Employment and Vacancies. The yearly figures refer to the averages of the four quarterly estimates of the year.
  - The Composite CPI covers about 90% of households in Hong Kong with a monthly household expenditure of HK\$1,000-59,999 per month in the base period (1991/95), and its year-on-year rate of change is often taken as a measure of general inflation. The CSPI is developed by the HKCSI and is derived from the services items in the CPI. The Composite CSPI occupies 49.75% of the weighting of the Composite CPI.
  - WTO secretariat estimates based on incomplete or preliminary data.
  - Including adjustment for financial intermediation services indirectly measured.
  - Including electricity, gas and water.
  - Including wholesale, retail and import/export trade.
  - Including restaurants and hotels.
  - Figures on the number of persons engaged include individual operators such as taxi, public light buses and goods vehicles for land transport services; barges/lighter and stevedoring services providers for maritime transport services; retail pitches and hawkers for wholesale and retail services.
  - Figures on number of establishments and persons engaged refer to data processing and tabulating services industry only.
  - Figures on internet usage was first available in August 1997.
  - Including transcripts and scans.
  - Percentages may not add up to 100 due to rounding.
- N.A. Not Available



The Hong Kong Coalition of Service Industries was founded in 1990 by the Hong Kong General Chamber of Commerce. It is the Chamber's service policy think tank. With representatives from more than 50 service sectors, the HKCSI is the major private sector voice for Hong Kong's service industries.

Enquiries about membership and the work of the HKCSI are most welcome. Please contact the secretariat at:

**Hong Kong Coalition of Service Industries**  
 c/o Hong Kong General Chamber of Commerce  
 22/F United Centre 95 Queensway Hong Kong  
 Tel : (852) 2529 9229 • Fax : (852) 2527 9843  
 Homepage : <http://www.hkcsi.org.hk>  
 E-mail : [csi@hkcsi.org.hk](mailto:csi@hkcsi.org.hk)

### Acknowledgement:

In preparing this statistical card, we are grateful to the Census and Statistics Department of the Government of the Hong Kong Special Administrative Region for their help.

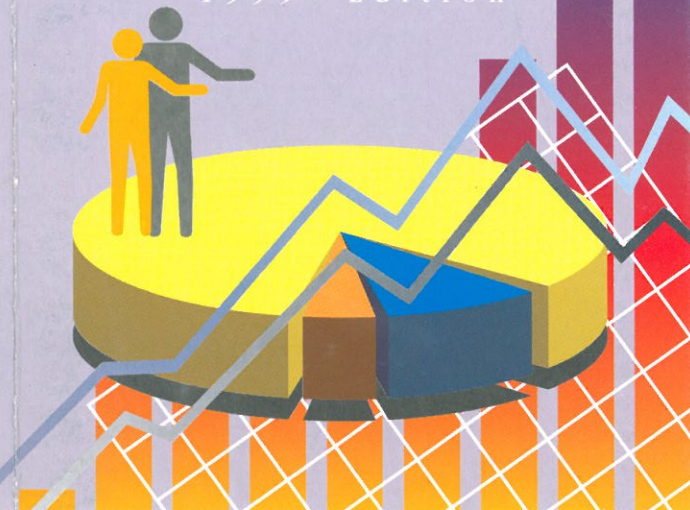


STATISTICAL CARD



# Services Sector Statistics

in Hong Kong  
1999 Edition



Sponsored by:



YOUR WORLD OF FINANCIAL SERVICES

## General Economic Data

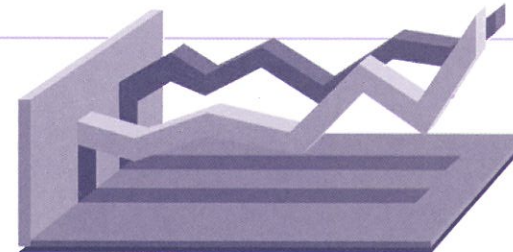
GROSS DOMESTIC PRODUCT <sup>a</sup>	1996	1997 <sup>c</sup>	1998 <sup>c</sup>
Expenditure-based GDP (HK\$ billion)	1,191.9	1,344.1	1,285.9
Per capita GDP (HK\$ thousand)	188.9	206.7	192.3
Total public expenditure (HK\$ billion)	211.2	234.8	275.1
as % GDP <sup>b</sup>	17.8%	17.5%	21.3%
PERCENTAGE CONTRIBUTION TO GDP <sup>a</sup>	1980	1987	1997 <sup>c</sup>
Primary industries <sup>d</sup>	1.0	0.4	0.1
Manufacturing	23.7	22.0	6.5
Service industries <sup>e</sup>	75.3	77.6	93.4
Total	100.0	100.0	100.0
POPULATION AND EMPLOYMENT	1978	1988	1998
Population at end of year (thousands)	4,769.9	5,671.6	6,805.6
Total labour force (thousands)	2,021.3	2,762.8	3,358.6
Sectoral Employment (%) <sup>f</sup> :			
Primary & manufacturing	N.A.	33.9%	8.7%
Service industries <sup>e</sup>	N.A.	66.1%	91.3%
PRICES AND INFLATION	1997	1998	1999
Year-on-year rate of change:	Average	Average	June
Composite Consumer Price Index <sup>g</sup>	5.8%	2.8%	-4.1%
Composite Consumer Services Price Index <sup>h</sup>	7.2%	4.1%	-3.5%

## Contribution to GDP at Factor Cost<sup>a</sup> and Gross Output and Percentage of Value Added

	% GDP		Gross Output (HK\$ million)		Value Added (% Gross Output)	
	1987	1997	1987	1997	1987	1997
1. Primary industries <sup>d</sup>	0.4	0.1	4,050	4,439	39.3	39.1
2. Manufacturing	22.0	6.5	300,424	264,266	26.9	30.3
3. Utilities <sup>i</sup>	2.6	2.4	13,510	37,597	71.7	77.7
4. Construction	4.6	5.8	36,762	146,772	46.3	48.8
5. Distributive trades <sup>k</sup>	19.9	21.9	135,108	505,166	53.9	53.5
6. Catering trades <sup>l</sup>	4.5	3.5	25,429	71,173	64.6	60.3
7. Transport	6.7	6.6	52,156	153,979	47.0	52.6
8. Storage & communication	2.0	2.6	11,624	68,230	62.0	46.6
9. Financing	6.5	10.1	36,048	182,168	65.9	68.3
10. Insurance	0.8	0.9	4,013	16,348	70.4	65.8
11. Real estate services	7.3	10.9	32,413	165,425	82.5	81.6
12. Business services	3.4	4.3	19,020	82,932	65.1	64.1
13. Government services	5.2	7.0	27,188	121,417	70.3	71.6
14. Personal services	6.4	7.5	42,809	178,496	54.9	51.9
15. Private non-profit bodies	2.8	3.3	15,897	65,098	65.3	62.8
16. Ownership of premises	9.8	13.9	37,746	180,806	95.0	95.0
17. Adjustment for financial intermediation services indirectly measured	-4.8	-7.3	-	-	-	-
All economic activities	100.0 <sup>o</sup>	100.0	794,199	2,244,311	46.2	55.0

## Percentage Employment by Industry

Industry Sector <sup>f</sup>	1988	1998
Primary & manufacturing	33.9%	8.7%
Utilities & construction	8.7%	11.0%
Wholesales, retail, I & E trades, restaurants & hotels	25.5%	31.4%
Transport, storage & communication	8.7%	12.0%
Financial, insurance, real estate & business services	6.5%	13.8%
Community, social & personal services	16.8%	23.2%
All industry sectors	100.0 <sup>o</sup>	100.0 <sup>o</sup>



## Composition of Imports and Exports of Goods and Services (at current market prices)

OVERALL TRADE (HK\$ million)	1996	1997 <sup>c</sup>	1998 <sup>c</sup>
<b>Goods</b>			
Exports of goods	1,397,917	1,455,949	1,347,649
Domestic exports	212,160	211,410	188,454
Re-exports	1,185,758	1,244,539	1,159,195
Imports of goods	1,539,851	1,619,468	1,432,423
<b>Services</b>			
Exports of services (as % of total exports)	296,188 (17.5%)	295,768 (16.9%)	265,368 (16.5%)
Imports of services (as % of total imports)	170,936 (10.0%)	179,685 (10.0%)	175,966 (10.9%)
<b>Trade Balance (exports less imports)</b>			
Goods	-141,934	-163,519	-84,774
Services	125,252	116,083	89,402
Total trade	-16,682	-47,436	4,628
TRADE IN SERVICES (HK\$ million)	Exports of Services	Imports of Services	
	1996	1997 <sup>c</sup>	1996
1. Transportation	100,555	102,826	39,887
2. Travel	84,520	72,086	88,640
3. Insurance	2,826	2,295	3,147
4. Financial	19,032	18,758	6,266
5. Trade-related	68,338	75,501	13,880
6. Other business	20,917	24,302	19,116

## Service Industries

SERVICE INDUSTRIES	Number of establishments		Number of persons engaged		Business receipts index (1996=100)	
	Dec 97	Dec 98	Dec 97	Dec 98	1997	1998
<b>Air transport services</b>	771	758	34,591	29,905	106.3	95.7
<b>Banking services</b>	1,954	1,929	86,828	80,504	103.9	97.6
<b>Films entertainment services</b>	1,036	1,001	5,465	4,739	107.3	100.6
<b>Financial markets &amp; fund management services</b>	2,289	2,107	24,049	24,009	165.2	93.3
<b>Import &amp; export trade services</b>	95,970	85,852	510,571	452,539	103.6	90.5
<b>Insurance services</b>	5,179	5,834	21,101	23,994	110.8	115.9
<b>Land transport services<sup>m</sup></b>	282	311	153,100	161,100	106.0	108.3
<b>Maritime transport services<sup>m</sup></b>	4,734	4,610	75,100	77,100	105.1	100.0
<b>Professional services</b>	10,313	9,135	83,595	78,888	112.7	103.2
<b>Real estate services</b>	13,091	11,217	82,696	77,795	113.8	86.4
<b>Telecommunications services</b>	971	903	36,565	32,525	119.4	115.5
<b>Wholesale &amp; retail services<sup>m</sup></b>	67,676	64,803	298,000	287,000	102.6	86.0
<b>SERVICE DOMAINS</b>	<b>Dec 97</b>	<b>Dec 98</b>	<b>Dec 97</b>	<b>Dec 98</b>	<b>1997</b>	<b>1998</b>
<b>Computer &amp; related services<sup>n</sup></b>	1,754	1,885	11,632	11,261	110.5	107.7
<b>Tourism, Convention &amp; Exhibition services</b>					88.2	63.1

## World Trade in Commercial Services 1998<sup>h</sup>

Leading world and Asian countries

Rank	Exporters	% Share	Rank	Importers	% Share
1	United States	18.1	1	United States	12.5
2	United Kingdom	7.7	2	Germany	9.4
3	France	6.1	3	Japan	8.5
4	Germany	5.9	4	United Kingdom	5.9
5	Italy	5.4	5	Italy	5.4
6	Japan	4.7	6	France	4.9
<b>10</b>	<b>Hong Kong, China</b>	<b>2.6</b>	<b>11</b>	<b>China</b>	<b>2.2</b>
14	Korea, Rep. of	1.8	13	Taiwan	1.8
15	China	1.8	14	Korea, Rep. of	1.8
17	Singapore	1.4	<b>15</b>	<b>Hong Kong, China</b>	<b>1.8</b>
19	Taiwan	1.3	19	Singapore	1.4
24	Thailand	1.0	28	Thailand	0.9